



#### Glendora, California

Toll-Free: 800.735.5566

Phone: 909.592.6272

Fax: 909.592.7971

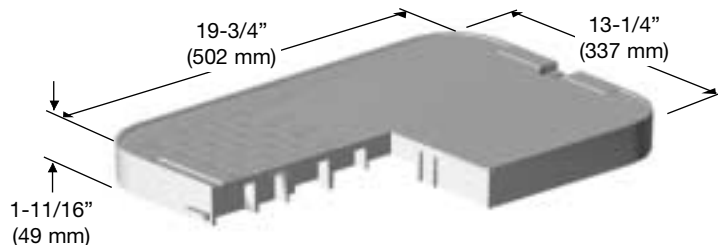
#### Roscommon, Ireland

Phone: 35.39.03.25922

Fax: 35.39.03.25921

# L Series 1220-12

## Light Duty

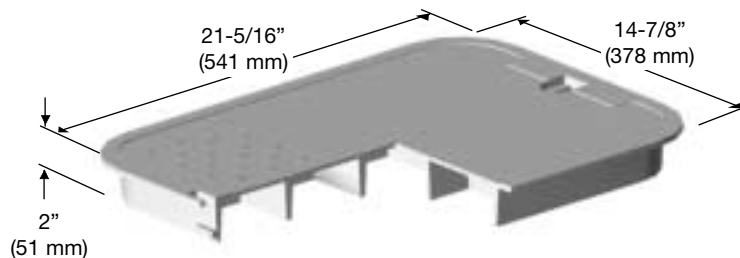


### Flush Cover

Material: HDPE

Weight: 4.0 lbs.

Model: 1220-3 No Bolt  
1220-3B Bolt Down



### T-Cover

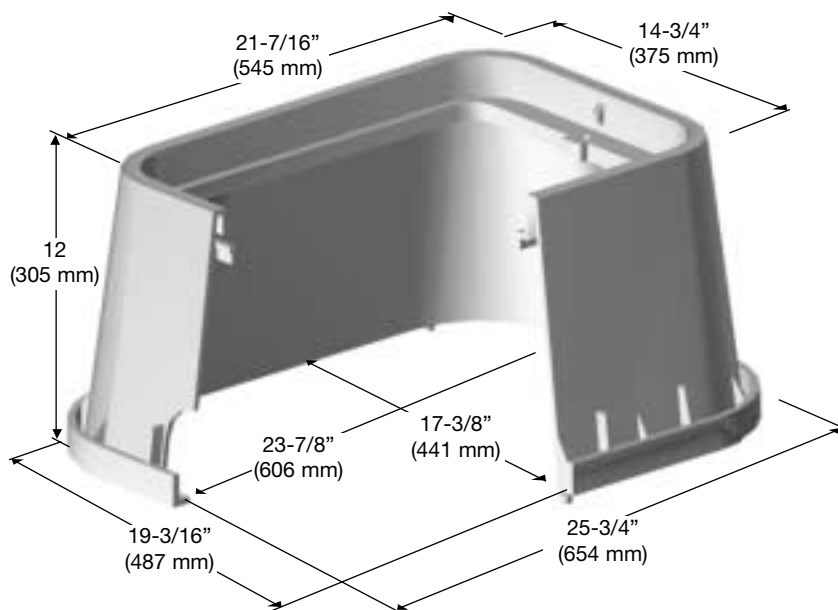
Material: HDPE

Weight: 4.0 lbs.

Model: 1220-4 No Bolt  
1220-4B Bolt Down

See **OPTIONS SECTION**:

- Meter reader cover
- Cast Iron Cover



### Body

Material: HDPE

Weight: 9.4 lbs.

Model: 1220-12

### Colors Available

Green, Gray, Black, Tan or Violet

Note: For use in non-vehicular traffic situations only. We do not recommend installation in concrete or asphalt. Weights and dimensions may vary slightly.

# L Series 1220-12

## Light Duty

### Static Vertical Load Rating

(Design Load; Test Load)

- ASTM C857 – A-0.3, 300 lbf/ft<sup>2</sup>; Report Ultimate
- SCTE – Light Duty, Pedestrian; 3,000 lbf

### Shipping Configuration

- Unit, 48 assemblies,  
= 56.14 cu. ft., 675.0 lbs.

## Carson Industries, LLC

### Glendora, California

Toll-Free: 800.735.5566

Phone: 909.592.6272

Fax: 909.592.7971

### Roscommon, Ireland

Phone: 35.39.03.25922

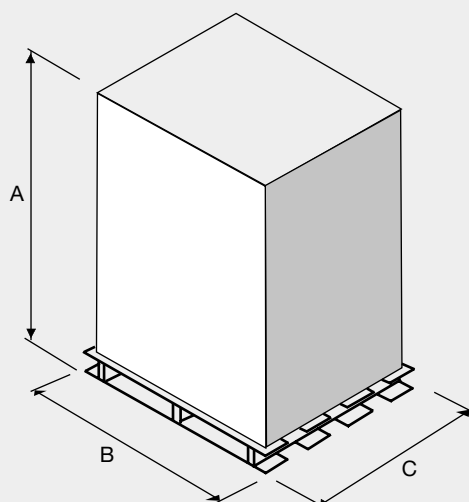
Fax: 35.39.03.25921

Material Property	ASTM Test Method	Typical Value <sup>1</sup>
Type, Class, Category	D 1248	III, A, 3
Density, g/cm <sup>3</sup>	D 1505	0.950 min., not to exceed 0.965
Tensile Strength, at break, psi	D 638	3,000 to 4,400
Elongation, at break, %	D 638	400
Tensile Impact, ft-lb/in <sup>2</sup>	D 1822	27
Flexural Modulus, psi	D 790	120,000 min., not to exceed 240,000
Low Temperature Brittleness, F50, at °C	D 746	<-76
Hardness, Shore D	D 2240	66
Deflection Temperature, at 66 psi, °F	D 648	150° min., not to exceed 200°
Electrical Dielectric Strength, V/mil	D 149	400 min., not to exceed 600
<b>Molded Product<sup>2</sup></b>		
Chemical Resistance	D 543	Very Resistant
Water Absorption	D 570	Less than 1% weight change

<sup>1</sup>The values listed for physical property measurements are nominal values only. Certain physical property measurements are subject to variations consistent with the test methods and are within a generally accepted range for such values.

<sup>2</sup>Test reports available on request.

### Shipping Information



UNIT			FLUSH COVER			T-COVER		
Dim.	Description	Value	Dim.	Description	Value	Dim.	Description	Value
A	Height	50"	A	Height	47"	A	Height	53"
B	Length	40"	B	Length	40"	B	Length	40"
C	Width	48"	C	Width	48"	C	Width	48"

**Units:** 48 per pallet  
**Weight:** 683 lbs. per pallet

**Units:** 150 per pallet  
**Weight:** 640 lbs. per pallet

**Units:** 150 per pallet  
**Weight:** 640 lbs. per pallet

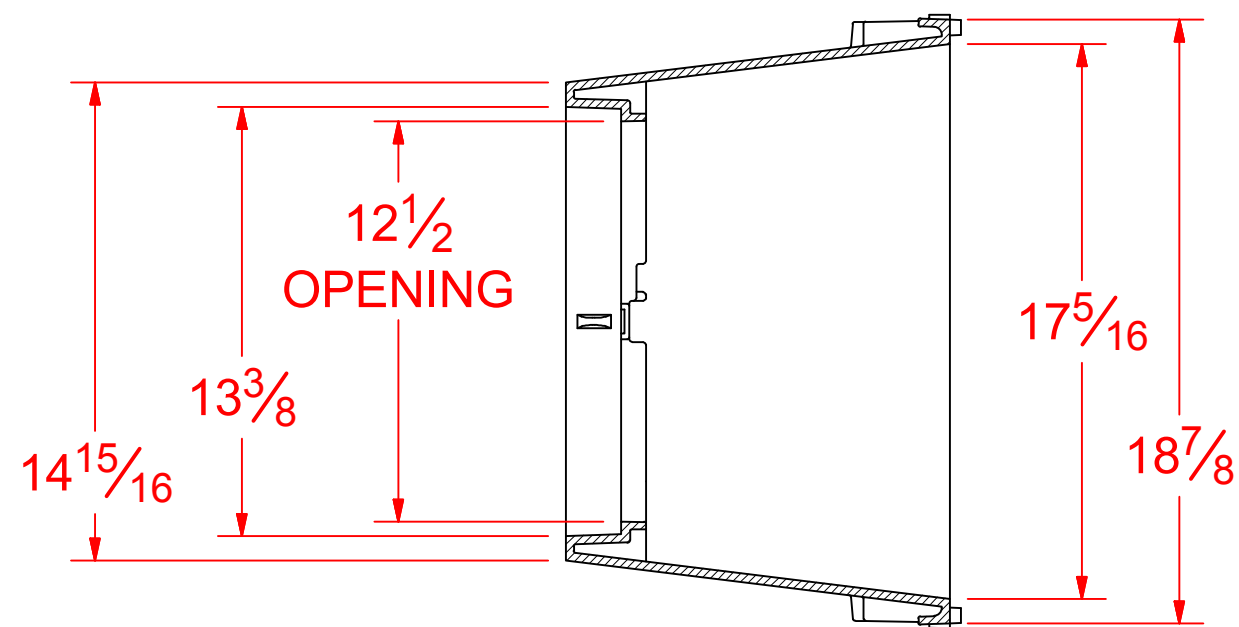
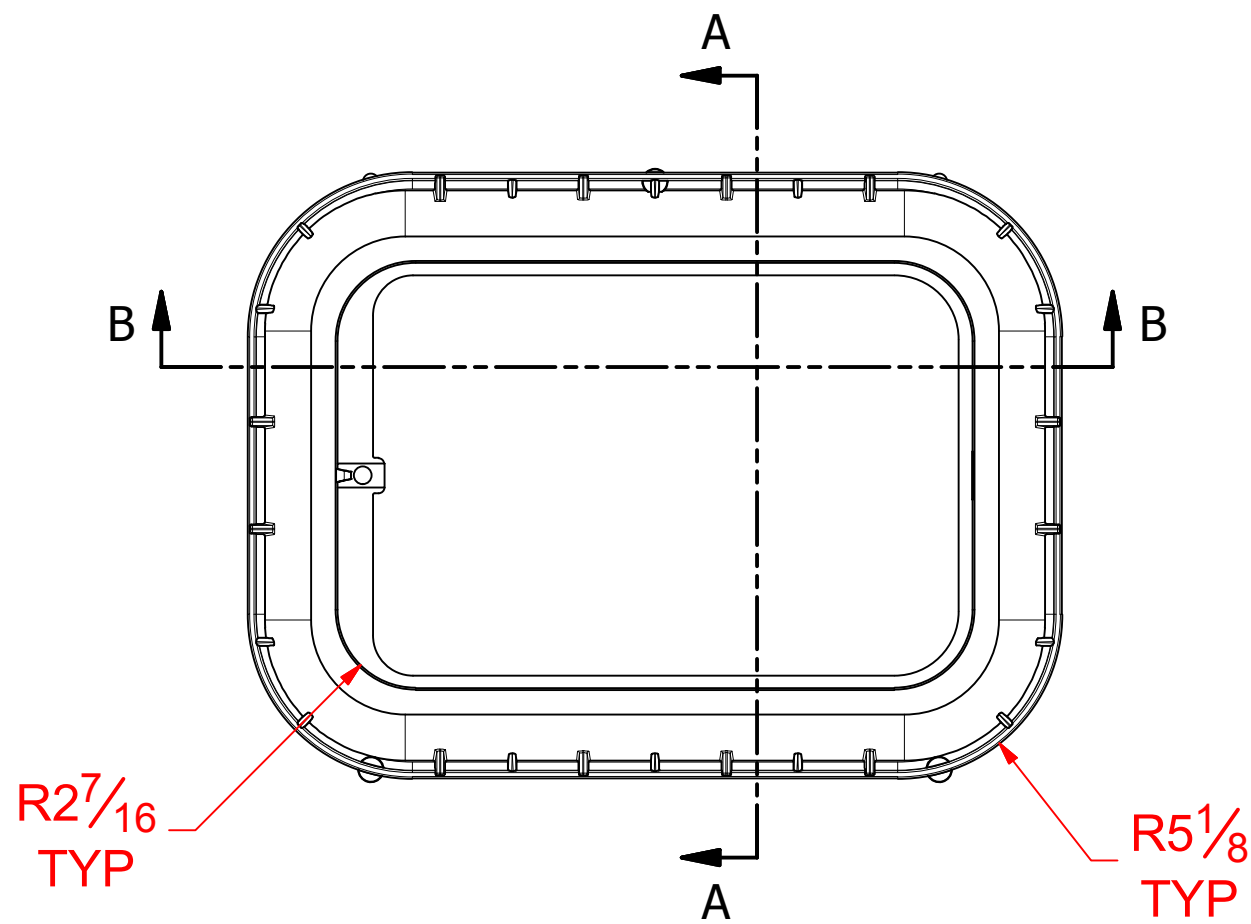
BODY		
Dim.	Description	Value
A	Height	50"
B	Length	40"
C	Width	48"

**Units:** 48 per pallet  
**Weight:** 492 lbs. per pallet

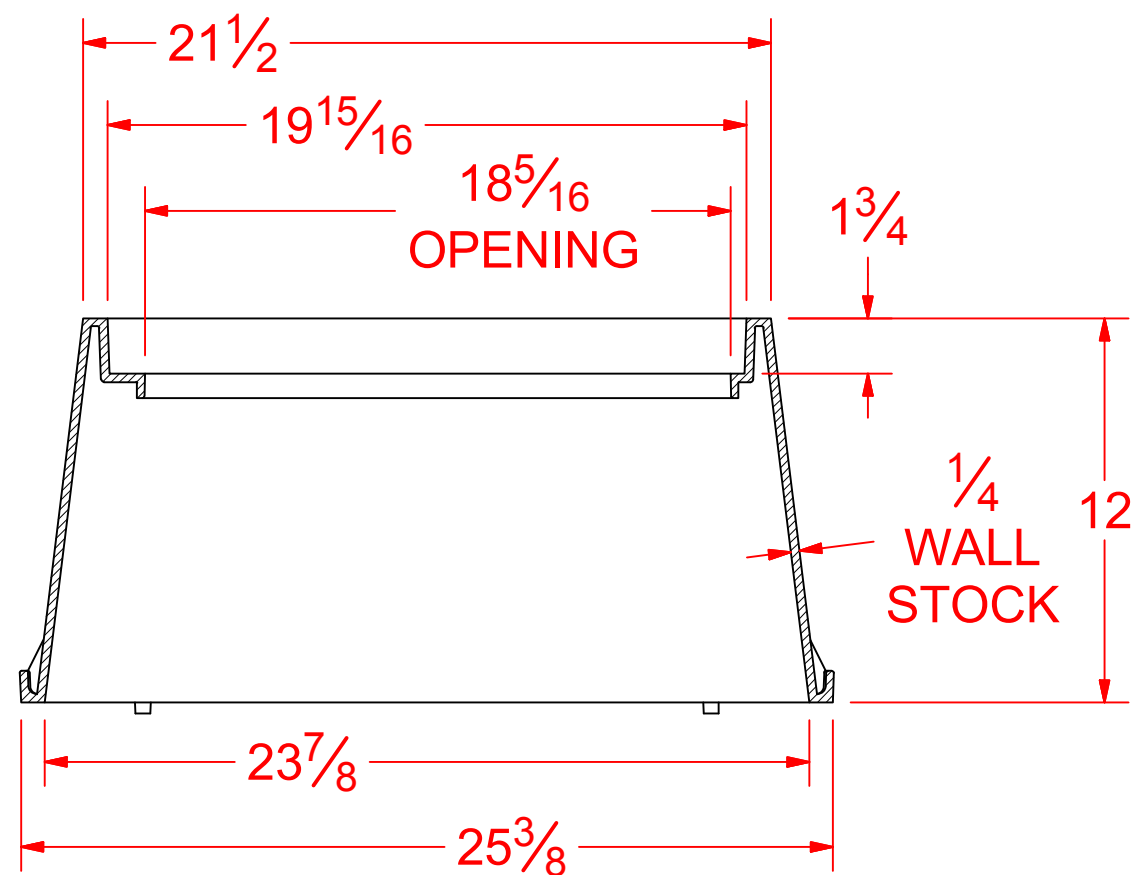
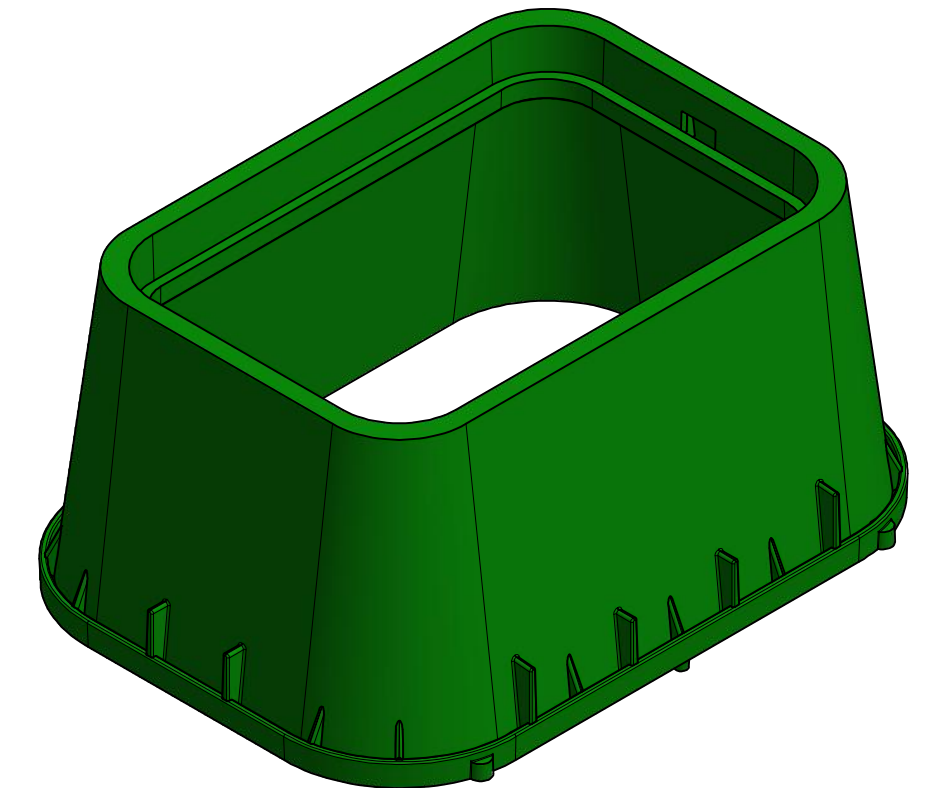
Note: For use in non-vehicular traffic situations only. We do not recommend installation in concrete or asphalt. Weights and dimensions may vary slightly.

All information contained in this brochure was current at the time of printing. Because of Carson Industries' policy of ongoing research and development, the Company reserves the right to discontinue or update product information without notice.

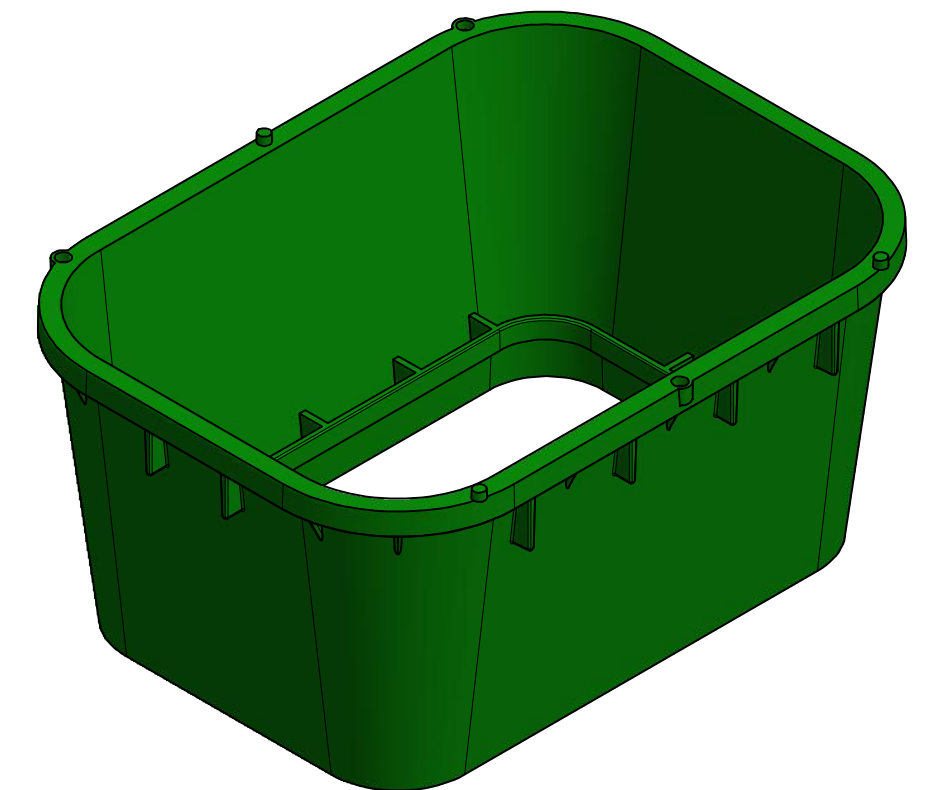




SECTION A-A



SECTION B-B



MATERIAL: HIGH DENSITY POLYETHYLENE, GREEN


SKU SHOWN: 12202002

**CUSTOMER FORMAT DRAWING**  
BODY EST. WEIGHT: 9.27 LBS

UNLESS OTHERWISE SPECIFIED  
ALL DIMENSIONS ARE IN INCHES  
TOLERANCE:  
.XXX = ±.005  
.XX = ±.010  
.X = ±.030  
  
FRACTION = ±1/16  
ANGLE = ±1°

THIS DOCUMENT IS THE PROPERTY OF OLDCASTLE ENCLOSURE SOLUTIONS. IT IS CONFIDENTIAL, SUBMITTED FOR REFERENCE PURPOSES ONLY, AND SHALL NOT BE USED IN ANY WAY INJURIOUS TO THE INTERESTS OF, OR WITHOUT THE WRITTEN PERMISSION OF OLDCASTLE ENCLOSURE SOLUTIONS.

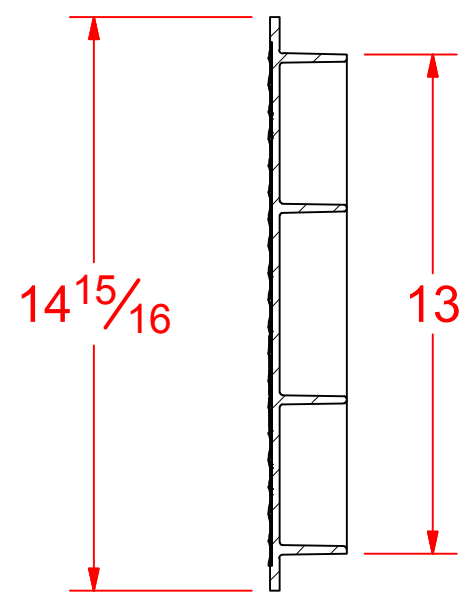
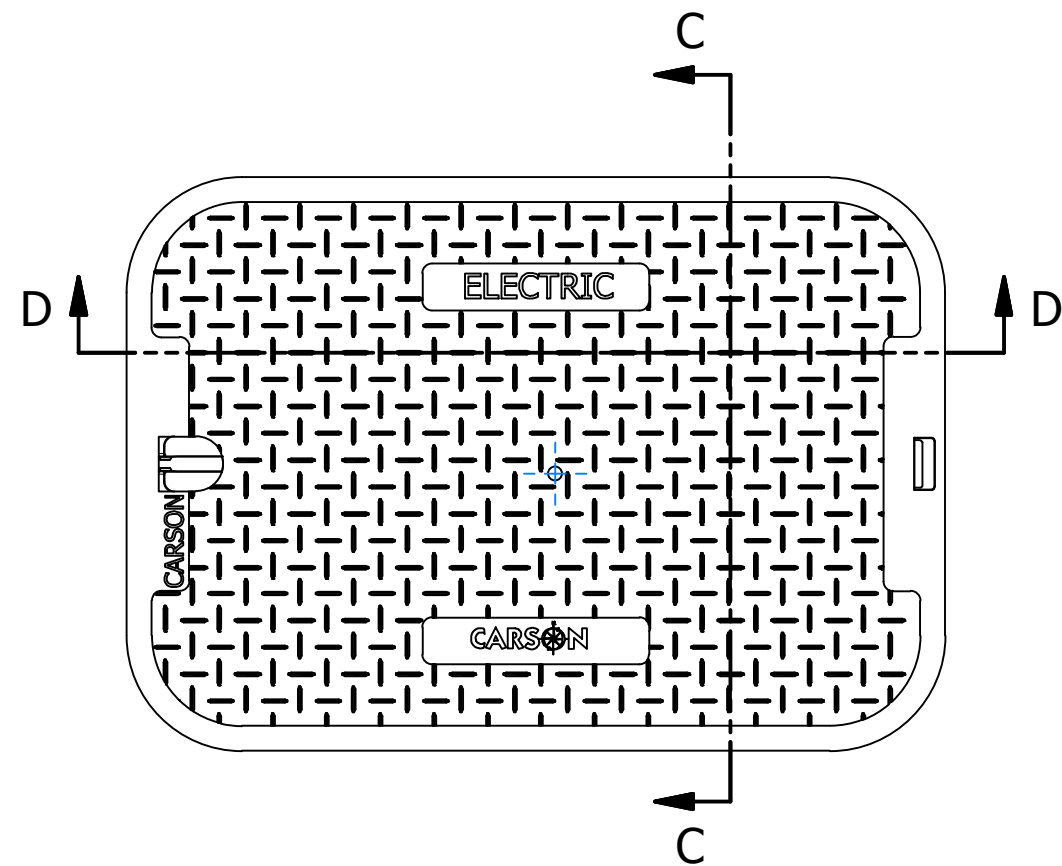
COPYRIGHT © 2012 Oldcastle Enclosure Solutions  
All Rights Reserved



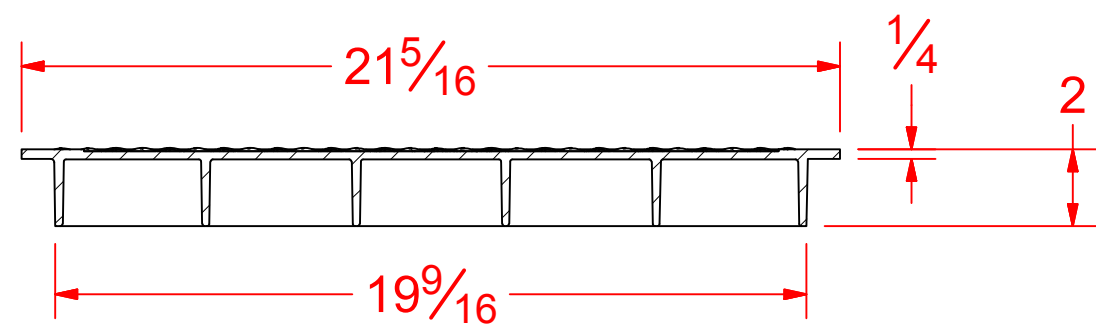
**Oldcastle®** Enclosure Solutions  
1675 INDUSTRIAL DR.  
NAPOLEON, OH 43545  
419-592-2309

DRAWN		TITLE		
K LEITENBERGER	3/22/2016	12201039 - 1220-12		
CHECKED		GREEN 'ELECTRIC' IPNTA - 0 MSHL		
QA		TCVR 3/8 IN. HOLE_011		
MFG		SIZE	DWG NO	REV
		C	12201039	A
APPROVED		SCALE		SHEET 2 OF 3
E LONG	3/22/2016			

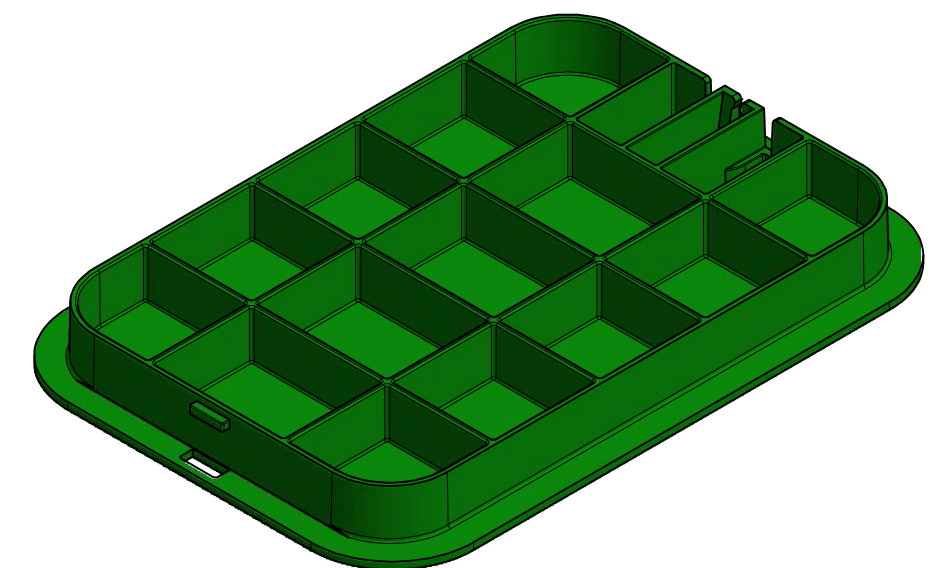
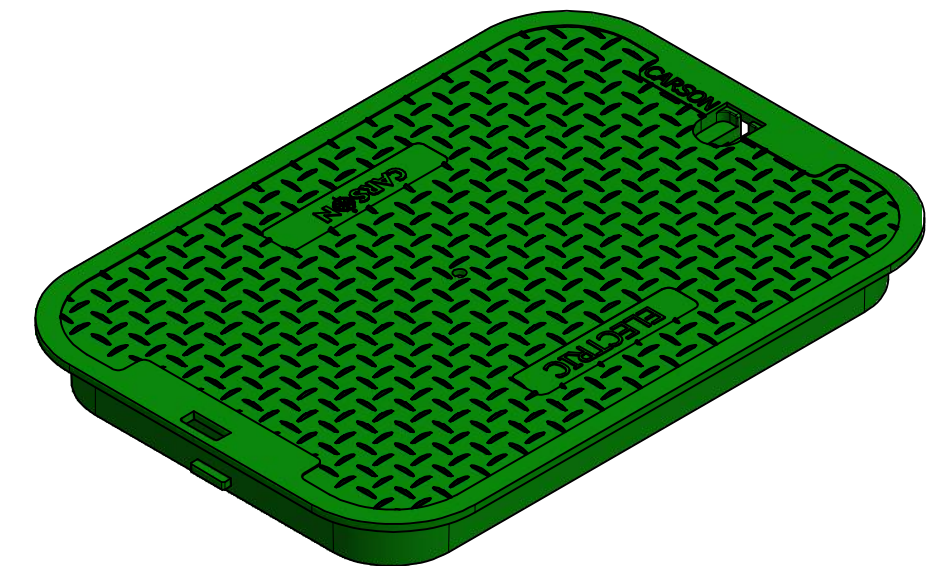
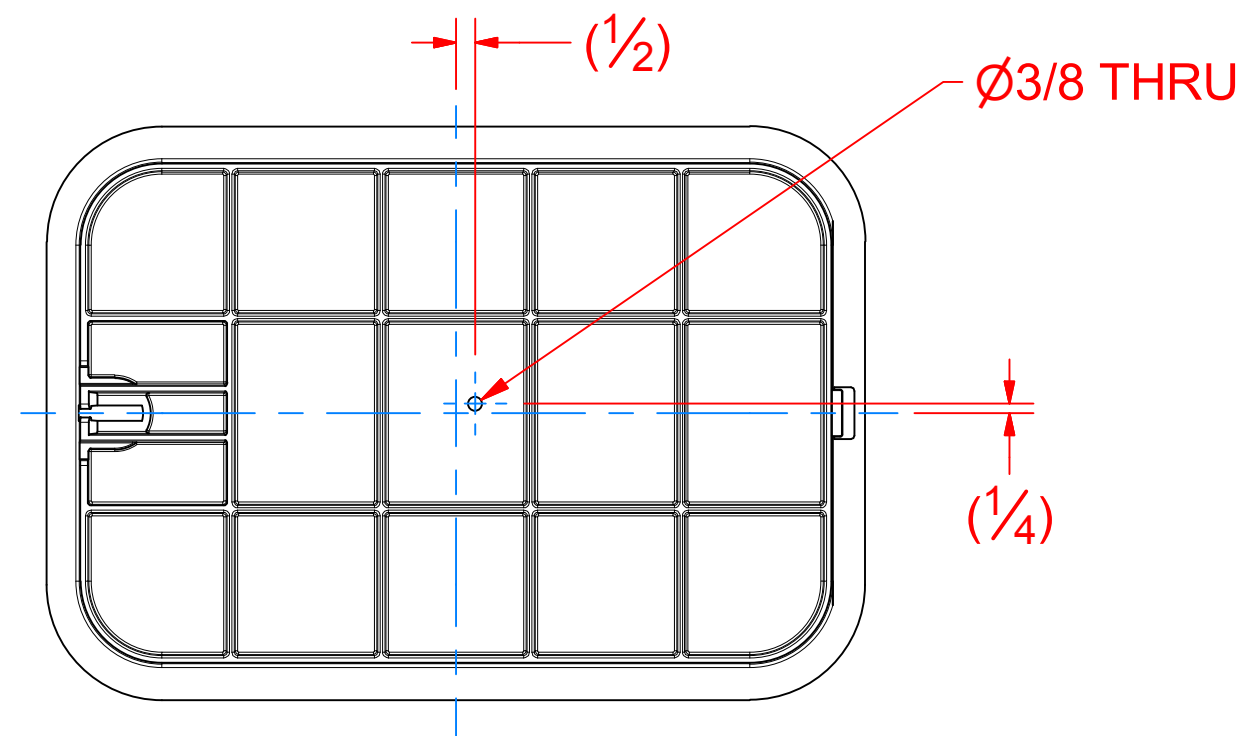




SECTION C-C



SECTION D-D



MATERIAL: HIGH DENSITY POLYETHYLENE, GREEN

NOTES:  
1. HOLE LOCATION APPROXIMATE

SKU SHOWN: 12204048

**CUSTOMER FORMAT DRAWING**

LID EST. WEIGHT: 4.7 LBS

UNLESS OTHERWISE SPECIFIED  
ALL DIMENSIONS ARE IN INCHES  
TOLERANCE:  
.XXX = ±.005  
.XX = ±.010  
.X = ±.030  
FRACTION = ±1/16  
ANGLE = ±1°

THIS DOCUMENT IS THE PROPERTY OF OLDCASTLE ENCLOSURE SOLUTIONS. IT IS CONFIDENTIAL, SUBMITTED FOR REFERENCE PURPOSES ONLY, AND SHALL NOT BE USED IN ANY WAY INJURIOUS TO THE INTERESTS OF, OR WITHOUT THE WRITTEN PERMISSION OF OLDCASTLE ENCLOSURE SOLUTIONS.  
COPYRIGHT © 2012 Oldcastle Enclosure Solutions  
All Rights Reserved

DRAWN	K LEITENBERGER	3/22/2016
CHECKED		
QA		
MFG		
APPROVED	E LONG	3/22/2016



**Oldcastle®** Enclosure Solutions  
1675 INDUSTRIAL DR.  
NAPOLEON, OH 43545  
419-592-2309

TITLE		12201039 - 1220-12 GREEN 'ELECTRIC' IPNTA - 0 MSHL TCVR 3/8 IN. HOLE_011	
SIZE	C	DWG NO	12201039
SCALE			
SHEET 3 OF 3		REV A	