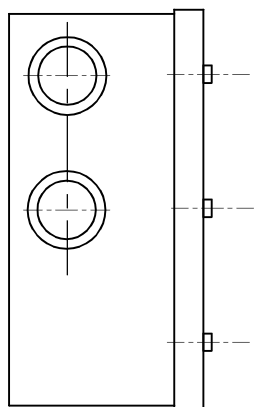


FOR ALL KNOCKOUTS
SEE NOTE # 2

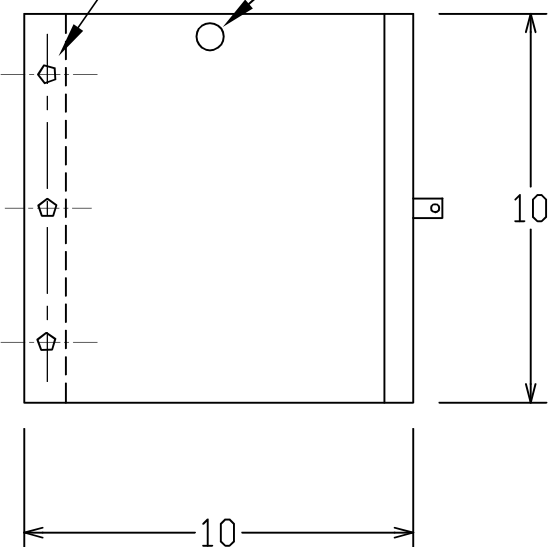
TOP VIEW

TAP FOR 10/32 M.S.
(3 HOLES REQ'D)

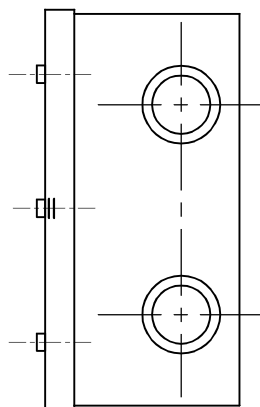
BARREL LOCK
PROVISION



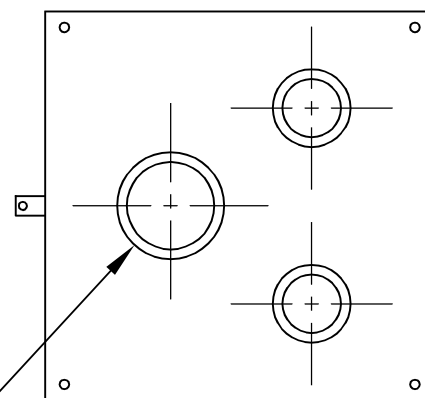
SIDE VIEW



FRONT VIEW
SERVICE END BOX
10"x10"x5"

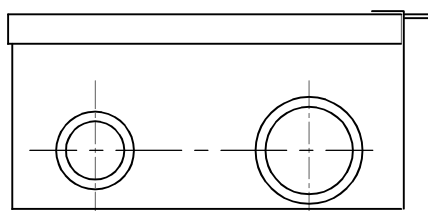


SIDE VIEW



REAR VIEW

FOR ALL KNOCKS OUTS
SEE NOTE # 2



BOTTOM VIEW

NOTES:

1. BOX AND COVER FABRICATED FROM NO. 14 GAUGE GALVANIZED SHEET STEEL AND GRAY FINISH
2. KNOCKOUTS WILL BE PROVIDED AS PER CON EDISON SPEC. NO. MES 205
3. PROVISION FOR CON EDISON WIRE SEAL AND BARREL LOCK
4. NAME PLATE ON COVER WITH MANUFACTURER'S NAME AND CAT. NO. D-205
5. FOR OUTDOOR TYPE THE CABINET SHALL BE CONSTRUCTED AND DESIGNATED "RAINTIGHT" WITH THE CAT. NO. RT-D205

NOTICE TO INSTALLER

THE INSTALLER IS RESPONSIBLE FOR ADVISING DELTA STANDARD PROD. BEFORE FABRICATION IS STARTED, OF ANY BUILDING OBSTRUCTION WHICH INTERFERES WITH THE TRANSPORTATION OF THE EQUIPMENT BY HIM FROM THE SIDEWALK TO PERMANENT LOCATION.

SUPERIOR ELECTRICAL ENCLOSURE INC.
DBA: Delta Standard Products

16 SPENCER ST. BROOKLYN. N.Y. 11205
PHONE: 718-797-9090 FAX: 718-797-9099
e-mail: info@superioree.com

JOB SITE:

DATE:
3/10/15

DWG. NO.:

D205-SEE