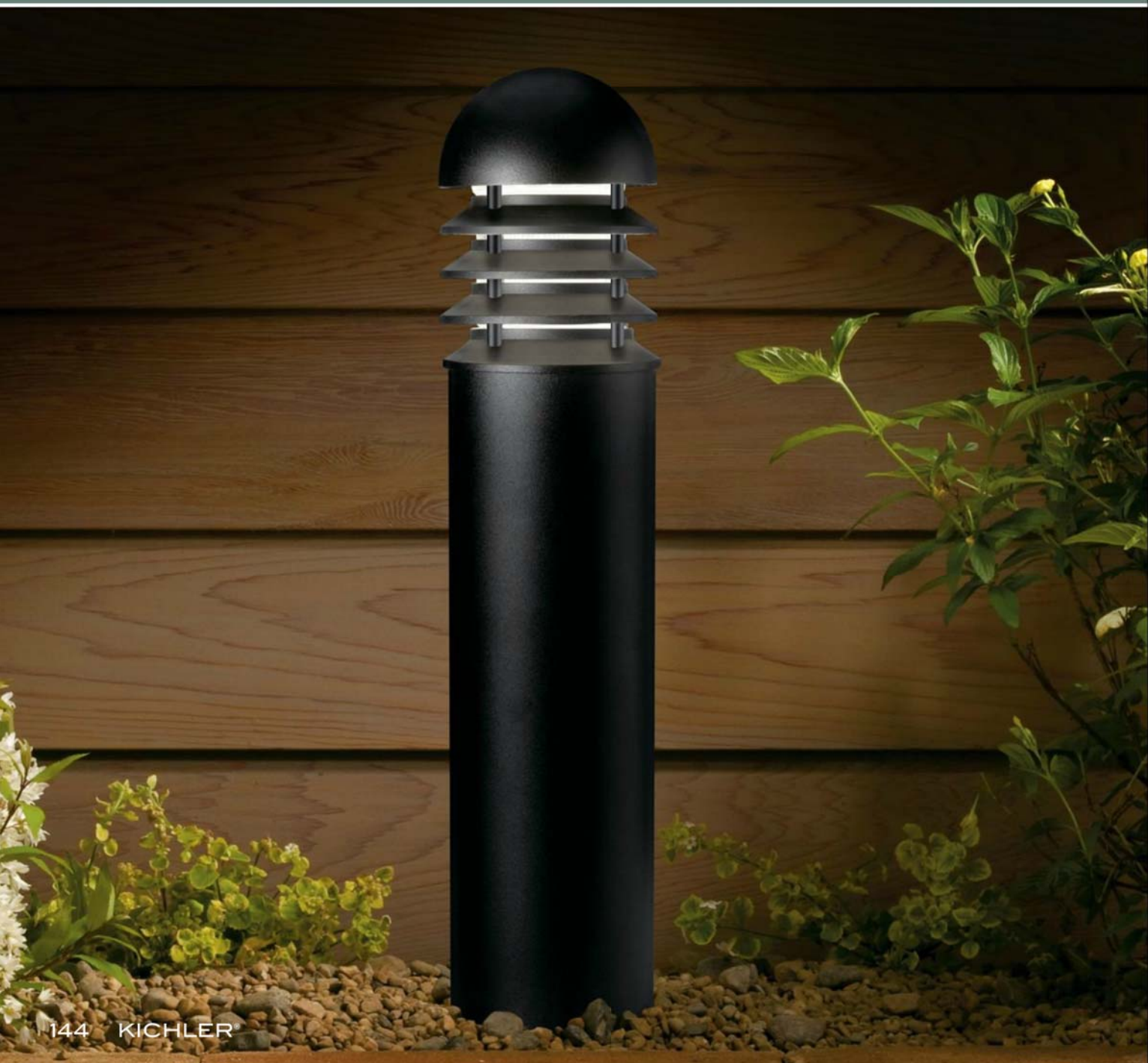


120 VOLT & HID

# Path & Spread

Let powerful light inhabit space around walkways, landscapes, and office buildings.



## HID BOLLARDS

Kichler offers a collection of HID bollards employing the same stylish designs, premium quality materials and product flexibility that you've come to expect from Kichler. You'll discover more than ninety possible product combinations to satisfy any construction or specification criteria – and ordering what you need is as simple as 1 – 2 – 3.

### STEP 1

#### Select your head design and finish.

Choose from the signature Kichler segmented roof design in a small or large size, or the traditional rounded top. Two finishes are available: Textured Architectural Bronze™ or Textured Black. Head and louvers are commercial-grade Cast Aluminum construction.

**Housing** Cast Aluminum.

**Lens** Molded ribbed diffuser of clear heat resistant borosilicate lenses.

**Finish** Textured Architectural Bronze™ (AZT) or Textured Black (BKT)

**Wiring** 43" of usable 200°C 18 AWG wire leads

**Socket** 4000-Volt (4KV) pulse rated medium base porcelain socket

**Lamp Type** 50, 70, or 100-W. Max. E17 Metal Halide

#### Head Design

**15215 AZT**

**15215 BKT**

**15221 AZT**

**15221 BKT**

**15226 AZT**

**15226 BKT**



**15215**  
Small Conical



**15221**  
Large Conical



**15226**  
Dome

### STEP 2

#### Determine the bollard size, height and diameter.

Bollards are available in 4" or 6" size and in lengths of 18", 24" or 36". Bollard kit is supplied with cast aluminum internal mounting plate including lag bolts for deck or surface mounting. Extruded aluminum bollard finished with baked thermoset powder coat. Order separate bollard template kit for installation into concrete or 15578 BK bollard mounting stake for installation in soil. UL listed.

For use with fixtures 15215, 15221, and 15226.

Finish Textured Architectural Bronze™ (AZT) or Textured Black (BKT)

#### Bollard Assembly

**15603 AZT 4" x 18"**

**15603 BKT 4" x 18"**

**15604 AZT 4" x 24"**

**15604 BKT 4" x 24"**

**15605 AZT 4" x 36"**

**15605 BKT 4" x 36"**

**15613 AZT 6" x 18"**

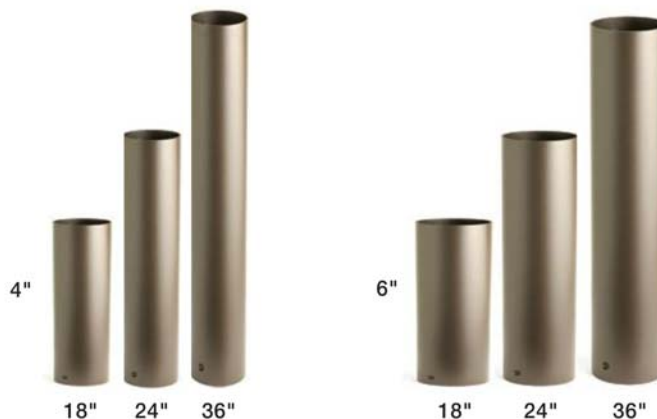
**15613 BKT 6" x 18"**

**15614 AZT 6" x 24"**

**15614 BKT 6" x 24"**

**15615 AZT 6" x 36"**

**15615 BKT 6" x 36"**



### STEP 3

#### Determine your desired lamp/ballast combination.

50-W, 70-W and 100-W Metal Halide are offered. (Lamps are not included.) Each comes equipped with ballasts that will accept multiple voltage options: 120V, 208V, 240V or 277V. (Because of heat restrictions, 100-W lamping cannot be used in the 4" diameter bollard.) All mounting hardware is corrosion resistant.

#### Ballast Assembly

**15BLMH50 BK** - 50-W Metal Halide

**15BLMH70 BK** - 70-W Metal Halide

**15BLMH100 BK** - 100-W Metal Halide (use only with 6" diameter bollard)

50 W and 70 W fixtures can be used with 4" and 6" diameter bollard.

In addition to the lighting fixtures, Kichler offers 4" and 6" Bollard Template Kits used for permanent installation in concrete. The kits include positioning template, anchor bolts and mounting hardware.

- **15671 ST** – 4" Bollard Template Kit
- **15678 ST** – 6" Bollard Template Kit



For complete photometrics, please see page 181.