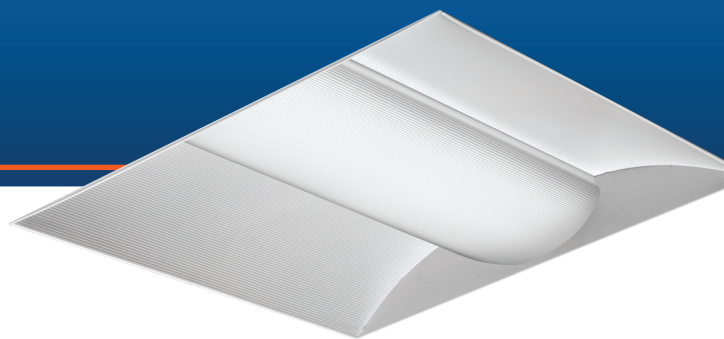




Series

VOLUMETRIC LED LUMINAIRES (VTL)



Ordering Example

Ordering nomenclature for the new VT Series LED (VTL) has been shortened to make ordering the product easier and allow for future consistency of ordering products.

- Starting with VT Series LED and all Commercial Indoor products that follow, we will no longer require a wattage selection for the product. Instead, each spec sheet will list the nominal wattage for each product. New VT Series LED spec sheets reflect this change; all other existing products will require the selection of wattage.
- Going forward all products will now use nominal lumen output rather than actual to provide consistency between product families.
- With the expansion of our driver options, we have added a required field for your choice in driver type. A listing of the drivers and functions of each is included in the FAQs of this product update.
- The controls option has been changed from required (required on all catalog numbers) to an option. In the past, if you ordered a fixture that did not require lumen management or bi-level dimming you were required to select "NX". The new ordering requires no such selection.

Example of the new ordering structure:

2VTL2 33L ADP EZ1 LP830

Series (required) -	2VTL2
Air function (required but default is static or "blank")	
Delivered Lumens -	33L
Diffuser - Always	ADP
Voltage - default is MVOLT which is "blank"	
Driver - eldoLED, 0-10V, 1% dimming	EZ1
Color temperature - no change	LP830

At this point you have completed the catalog number; however, you may add nLight® control options, bi-level dimming or battery pack options if the solution requires.

VTLED Crossover Guide

Current VTLED Series	New VT Series LED (VTL)
2' x 2'	
2VTL2 24L ADP D24 LP835 NX	2VTL2 20L ADP EZ1 LP835
2VTL2 24L ADP D24 LP835	2VTL2 20L ADP EZ1 LP835 N100
2VTL2 36L ADP D36 LP835 NX	2VTL2 33L ADP EZ1 LP835
2VTL2 36L ADP D36 LP835	2VTL2 33L ADP EZ1 LP835 N100
2VTL2 36L ADP D36 LP835 NX EL14L	2VTL2 33L ADP EZ1 LP835 NX EL14L

2' x 4'	
2VTL4 24L ADP D24 LP835 NX	2VTL4 24L ADP EZ1 LP835
2VTL4 24L ADP D24 LP835 BLD	2VTL4 24L ADP EZ1 LP835 BLD
2VTL4 24L ADP D24 LP835	2VTL4 24L ADP EZ1 LP835 N100
2VTL4 40L ADP D40 LP835 NX	2VTL4 40L ADP EZ1 LP835
2VTL4 40L ADP D40 LP835	2VTL4 40L ADP EZ1 LP835 N100
2VTL4 48L ADP D47 LP835 NX	2VTL4 48L ADP EZ1 LP835
2VTL4 48L ADP D47 LP835 NX EL14L	2VTL4 48L ADP LP835 EL14L
2VTL4 48L ADP D47 LP835	2VTL4 48L ADP EZ1 LP835 N100
2VTL4 72 ADP D75 LP835 NX	2VTL4 72 ADP EZ1 LP835
2VTL4 72 ADP D75 LP835 N100	2VTL4 72 ADP EZ1 LP835 N100

