

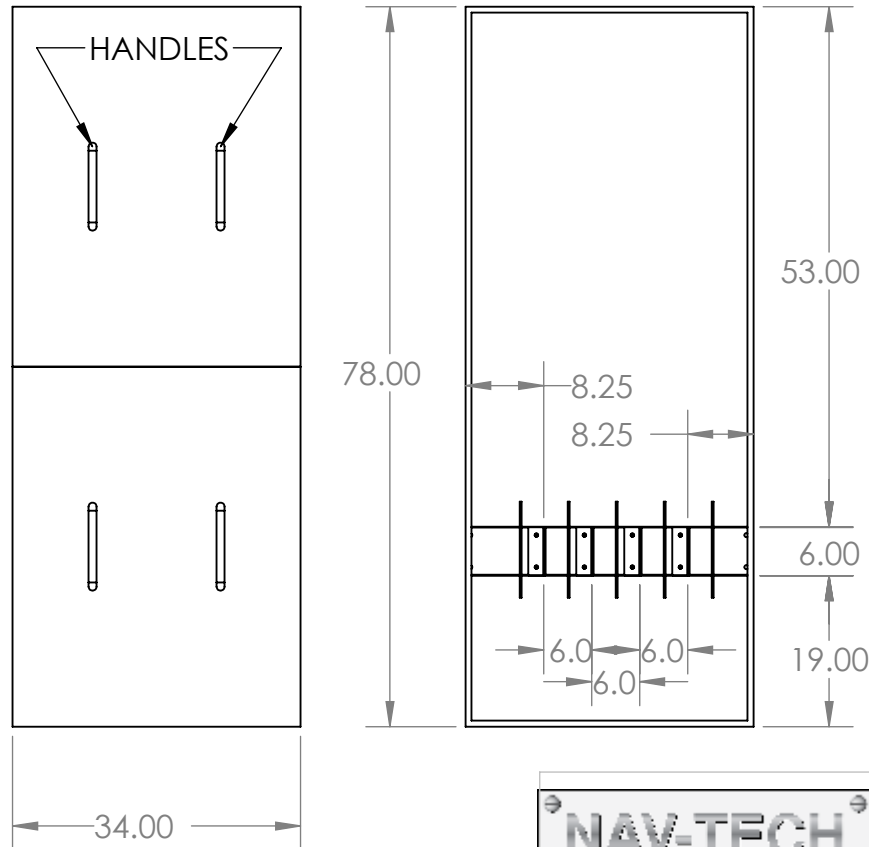
2

1

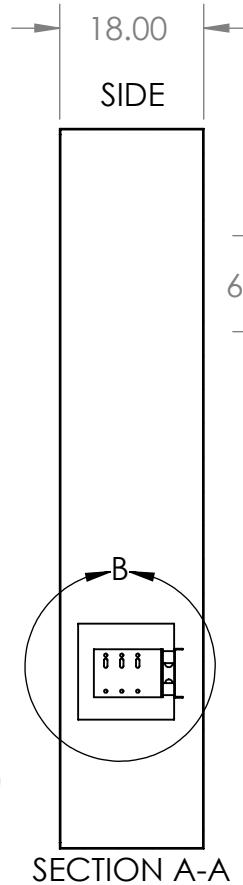
NOTES:

1. NEMA 1 12 GAUGE GALVANNEALED STEEL S.E.B.
2. BUS BARS- COPPER
3. BOX SHALL HAVE NAME PLATE WITH MANUFACTURER'S NAME
4. FRONT COVER SHALL BE SEALABLE WITH (2) HANDLES
5. "120/208v BLACK LABEL WITH WHITE LETTERING LOCATION ON INSIDE AND OUTSIDE OF THE ENCLOSURE FRONT COVERED

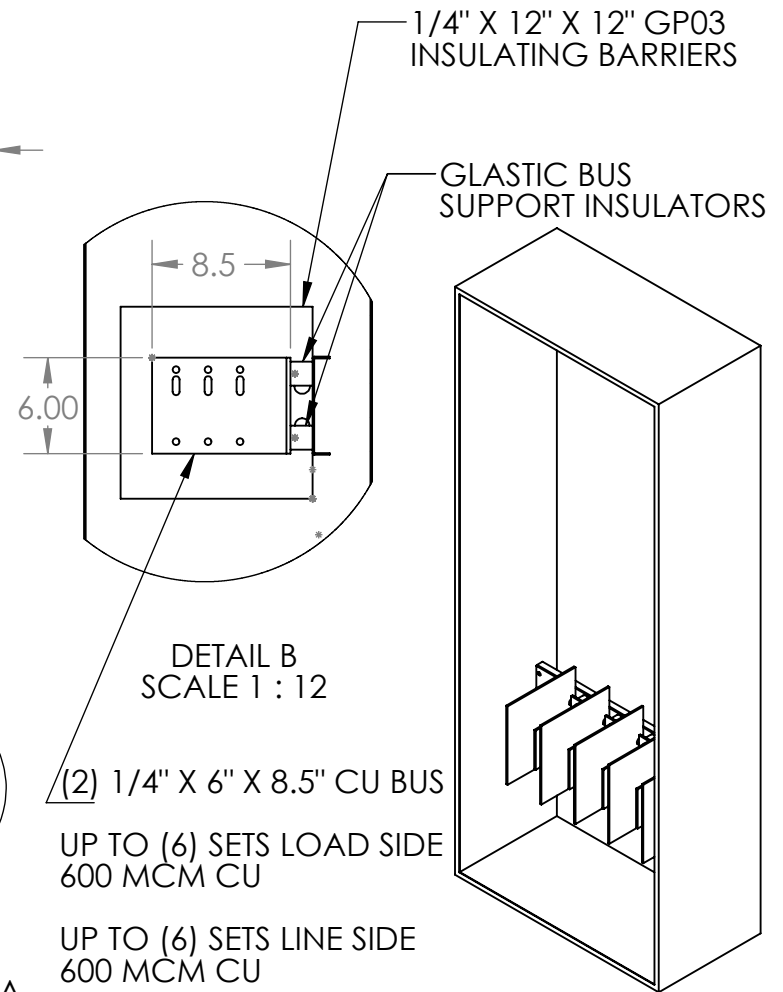
B



A



SECTION A-A



B

A

	NAME	DATE
DRAWN BY	J. Pincus	8/1/2023
APPROVED BY		

PROPRIETARY AND CONFIDENTIAL
THE INFORMATION CONTAINED IN THIS DRAWING IS THE SOLE PROPERTY OF Nav-Tech Inc. ANY REPRODUCTION IN PART OR AS A WHOLE WITHOUT THE WRITTEN PERMISSION OF Nav-Tech Inc. IS PROHIBITED.



155 MARCUS BLVD
HAUPPAUGE, NEW YORK 11788
PH: (718) 257-2111 FAX: (718) 257-2626

UNLESS OTHERWISE SPECIFIED:
ALL DIMENSIONS ARE NOMINAL UNLESS EXPLICITLY SPECIFIED OTHERWISE

MATL: 12 GA GALV
FINISH: ANSI 61 GREY POWDER COAT
WEIGHT:

- UNLESS OTHERWISE SPECIFIED**
1. REMOVE ALL BURRS AND BREAK ALL SHARP EDGES .015 X 45° OR .015R
 2. DIMENSIONAL LIMITS APPLY AFTER PLATING
 3. 125/ MACHINED SURFACES EXCEPT AS NOTED

DRAWING TITLE: CUSTOM 78 EO

PART #: NAV-EO-78-9073B

DESCRIPTION:
9073B SERVICE ENTRANCE BOX

**DO NOT SCALE
DRAWING**

SCALE: 1:24 SIZE A SHEET 1 OF 1 REV. 0

2

1