

# AALUX3 – ALUX™

## ARCHITECTURAL ALUMINUM BASEBOARD



### THE ARCHITECTS' CHOICE

When aesthetics is a factor, the AALUX3 is the heating unit of choice. The AALUX3 features a winning combination of style and functionality with its extruded aluminum finish and choice of watt densities. The AALUX3 is practically indestructible thanks to the quality of construction of its aluminum front panel with a thickness equivalent to 10 gauge. What's more, it offers the option of adding blank sections for a seamless, uniform look. Offices, large windows and schools can all benefit from the special features of this baseboard heater.

- **EXTRUDED ALUMINUM FRONT AND TOP COVER**  
WITH A UNIQUE, LUXURY DESIGN
- **EXTREMELY SOLID, IMPACT AND RUST RESISTANT**
- **OFFERED IN THREE WATT DENSITIES**
- **PERSONALIZED INSTALLATION**  
BLANK SECTIONS, PEDESTALS AND CLEAN BACKS AVAILABLE
- **UP TO 3 BUILT-IN CONTROL**  
IN THE SAME BASEBOARD

#### COLORS

- **standard:** white
- **luxury finish:** anodized aluminum (see price list)
- **Orora (optional):** refer to [www.stelpro.com/en-US/Orora](http://www.stelpro.com/en-US/Orora)

#### FINISH

- epoxy-polyester powdercoat or anodized aluminum finish

#### MANUFACTURING

- 3 in. x 4 in. compact profile
- solid 20-gauge steel cabinet
- extremely resistant extruded aluminum front cover with a thickness equivalent to 10 gauge
- thermal protection with automatic reset
- full-length wireway
- pencil-proof openings of less than 1/4 in. prevent foreign objects from entering the unit

#### ELEMENT

- single tubular, stainless steel sheathed element with boxed aluminum fins for improved heat dissipation; the element is securely fastened at its centre, floating in nylon sleeves at each end, eliminating expansion and contraction noises

#### CONTROL

- wall thermostat (not included) – the use of an electronic thermostat is strongly recommended
- built-in tamper-proof thermostat accessible without removing front grille, installed in the left junction box only (optional)
- low voltage relay kit installed in the left junction box only (optional)
- multiple integrated controls can be installed in the same baseboard inside one or two extensions (optional)

#### INSTALLATION

- surface mounted
- wall or floor mounted with or without pedestal kit (optional)
- at least 3 in. from the floor (models with BT option only)
- wiring compartments at both ends of unit
- for a continuous look, custom blank sections with a simple attachment system are available (optional)
- disconnect switch (optional)

#### WARRANTY

- three years

#### IDEAL FOR:

office, commercial space, hotel, lobby, solarium, school, hospital



Stelpro reserves the right to modify at any time the description, manufacturing, or price of its products. Additionally, Stelpro may apply restocking fees or refuse a refund based on one or more of the following criteria: optional color, custom product, assembly with low-demand options. For the latest product information and prices regarding the products, please visit the website [www.stelpro.com](http://www.stelpro.com).



FC\_ALUX3\_US\_260325

# TECHNICAL SPECIFICATIONS

COMMERCIAL USE 250 W PER LINEAR FOOT			COMMERCIAL USE 200 W PER LINEAR FOOT			RESIDENTIAL USE 150 W PER LINEAR FOOT			VOLTAGE	LENGTH	WEIGHT
CODE	WATTS	BTU/H	CODE	WATTS	BTU/H	CODE	WATTS	BTU/H	VOLTS	IN.	LB
AALUX306051	500	1706	AALUX306041	400	1365	AALUX306031	300	1024	120	23 5/8	6.7
AALUX306058	500	1706	AALUX306048	400	1365	AALUX306038	300	1024	208	23 5/8	6.7
AALUX306052	500/375	1706/1280	AALUX306042	400/300	1365/1024	AALUX306032	300/225	1024/768	240/208	23 5/8	6.7
AALUX306057	500	1706	---	400	1365	---	300	1024	277	23 5/8	6.7
AALUX309071	750	2560	AALUX309061	600	2048	AALUX309041	450	1536	120	35 7/16	10.1
AALUX309078	750	2560	AALUX309068	600	2048	AALUX309048	450	1536	208	35 7/16	10.1
AALUX309072	750/560	2560/1911	AALUX309062	600/450	2048/1536	AALUX309042	450/340	1536/1160	240/208	35 7/16	10.1
AALUX309077	750	2560	AALUX309067	600	2048	AALUX309047	450	1536	277	35 7/16	10.1
AALUX309075	750	2560	---	600	2048	---	450	1536	480	35 7/16	10.1
AALUX312101	1000	3413	AALUX312081	800	2730	AALUX312061	600	2048	120	47 1/4	13.4
AALUX312108	1000	3413	AALUX312088	800	2730	AALUX312068	600	2048	208	47 1/4	13.4
AALUX312102	1000/750	3413/2560	AALUX312082	800/600	2730/2048	AALUX312062	600/450	2048/1536	240/208	47 1/4	13.4
AALUX312107	1000	3413	AALUX312087	800	2730	AALUX312067	600	2048	277	47 1/4	13.4
AALUX312105	1000	3413	AALUX312085	800	2730	---	600	2048	480	47 1/4	13.4
AALUX315121	1250	4266	AALUX315101	1000	3413	AALUX315071	750	2560	120	59 1/16	16.8
AALUX315128	1250	4266	AALUX315108	1000	3413	AALUX315078	750	2560	208	59 1/16	16.8
AALUX315122	1250/940	4266/3208	AALUX315102	1000/750	3413/2560	AALUX315072	750/560	2560/1911	240/208	59 1/16	16.8
AALUX315127	1250	4266	AALUX315107	1000	3413	AALUX315077	750	2560	277	59 1/16	16.8
AALUX315125	1250	4266	AALUX315105	1000	3413	AALUX315075	750	2560	480	59 1/16	16.8
AALUX318151	1500	5119	AALUX318121	1200	4095	AALUX318091	900	3071	120	70 7/8	20.1
AALUX318158	1500	5119	AALUX318128	1200	4095	AALUX318098	900	3071	208	70 7/8	20.1
AALUX318152	1500/1125	5119/3839	AALUX318122	1200/900	4095/3071	AALUX318092	900/675	3071/2304	240/208	70 7/8	20.1
AALUX318157	1500	5119	AALUX318127	1200	4095	AALUX318097	900	3071	277	70 7/8	20.1
AALUX318155	1500	5119	AALUX318125	1200	4095	AALUX318095	900	3071	480	70 7/8	20.1
---	1750	5972	AALUX321141	1400	4778	AALUX321101	1050	3583	120	82 11/16	23.4
AALUX321178	1750	5972	AALUX321148	1400	4778	AALUX321108	1050	3583	208	82 11/16	23.4
AALUX321172	1750/1315	5972/4488	AALUX321142	1400/1050	4778/3583	AALUX321102	1050/790	3583/2696	240/208	82 11/16	23.4
AALUX321177	1750	5972	AALUX321147	1400	4778	AALUX321107	1050	3583	277	82 11/16	23.4
AALUX321175	1750	5972	AALUX321145	1400	4778	AALUX321105	1050	3583	480	82 11/16	23.4
---	2000	6825	---	1600	5460	AALUX324121	1200	4095	120	94 1/2	26.8
AALUX324208	2000	6825	AALUX324168	1600	5460	AALUX324128	1200	4095	208	94 1/2	26.8
AALUX324202	2000/1500	6825/5119	AALUX324162	1600/1200	5460/4095	AALUX324122	1200/900	4095/3071	240/208	94 1/2	26.8
AALUX324207	2000	6825	AALUX324167	1600	5460	AALUX324127	1200	4095	277	94 1/2	26.8
AALUX324205	2000	6825	AALUX324165	1600	5460	AALUX324125	1200	4095	480	94 1/2	26.8
AALUX327228	2250	7679	AALUX327188	1800	6143	AALUX327138	1350	4607	208	106 5/16	30.1
AALUX327222	2250/1690	7679/5767	AALUX327182	1800/1350	6143/4607	AALUX327132	1350/1010	4607/3447	240/208	106 5/16	30.1
AALUX327227	2250	7679	AALUX327187	1800	6143	AALUX327137	1350	4607	277	106 5/16	30.1
AALUX327225	2250	7679	AALUX327185	1800	6143	AALUX327135	1350	4607	480	106 5/16	30.1
AALUX327258	2500	8532	AALUX327208	2000	6825	AALUX327158	1500	5119	208	106 5/16	30.1
AALUX327252	2500/1875	8532/6399	AALUX327202	2000/1500	6825/5119	AALUX327152	1500/1125	5119/3839	240/208	106 5/16	30.1
AALUX327257	2500	8532	AALUX327207	2000	6825	AALUX327157	1500	5119	277	106 5/16	30.1
AALUX327255	2500	8532	AALUX327205	2000	6825	AALUX327155	1500	5119	480	106 5/16	30.1

Add W for white or CA for clear anodized (finish) (consult the optional colors chart or contact your Stelpro representative for all other colors).  
 --- not available



## ACCESSORIES

PRODUCT	DESCRIPTION
ALUX3T12*	built-in tamper-proof single pole thermostat (left side installation only)
ALUX3T22*	built-in tamper-proof double pole thermostat (left side installation only)
ALUX3RE153*	built-in electronic low voltage relay [15 A @ 120 V-347 V]
ALUX3RE156*	built-in electronic low voltage relay [6 A @ 600 V]
ALUX3RE153T**	built-in electronic low voltage relay c/w transformer 24 V [15 A @ 208 V-347 V]
ALUX3R841C1151*	built-in mechanical low voltage relay c/w transformer 24 V [6000 W @ 600 V]
ALUX3DIS277*	disconnect switch [20 A @ 120 V-277 V]
ALUX3DIS600*	disconnect switch [25 A @ 347 V-600 V]
PK5W	pedestal kit – single (kit of two)
PK5CAP	clear anodized (paint) pedestal kit – single (kit of two)
PK5DW	pedestal kit – double (kit of two)
PK5DCAP	clear anodized (paint) pedestal kit – double (kit of two)
ALUX3JSW	joiner strip (2 in.)
ALUX3JSCAP	clear anodized (paint) joiner strip (2 in.)
ALUX3IC90W	inside corner (back measures 6 7/16 in. long on each side)
ALUX3IC90CA	clear anodized (finish) inside corner (back measures 6 7/16 in. long on each side)
ALUX3OC90W	outside corner (back measures 6 7/16 in. long on each side)
ALUX3OC90CA	clear anodized (finish) outside corner (back measures 6 7/16 in. long on each side)
ALUX3CB**	clean back (fully finished, no mounting holes or knockouts)
ALUX3BT*	air inlet from below/output from top
ALUX3SAW	full-width flush fit stand – height of 2 to 12 in.
ALUX3SRW	full-width recessed stand (39/64 in. ) – height of 2 in.
ALUX3EXTW*	extension (4 7/8 in.) to use with more than one integrated control (1 for 2 controls, 2 for 3 controls – except for ALUX3DIS277)
ALUX3EXTCA*	clear anodized (finish) extension (4 7/8 in.) to use with more than one integrated control (1 for 2 controls, 2 for 3 controls – except for ALUX3DIS277)

**It is necessary to plan for one or two extensions for the installation of multiple controls integrated into the same baseboard**

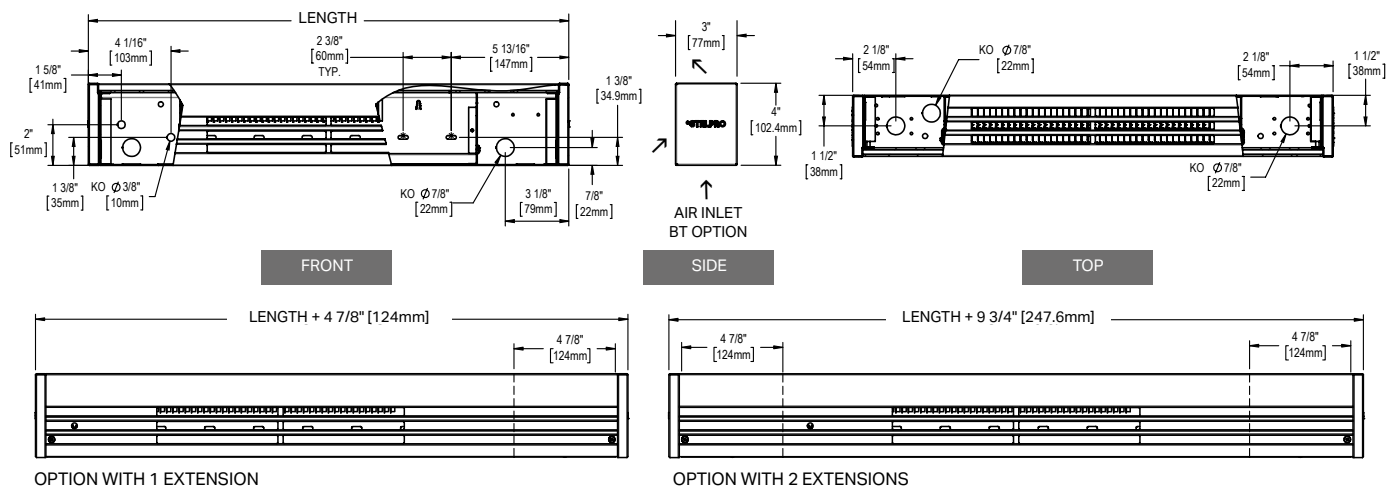
Electronic relays can receive a PWM (pulsed width modulation) or digital (on/off) signal

\* Factory installed

\*Transformer is supplying 27.5 Vac to thermostat when triac is used at 347 Vac. Here is the voltage supplied by the transformer when triac is used at other voltages:

VOLTAGE TRIAC			
347 Vac	277 Vac	240 Vac	208 Vac
27.5 V	21.2 V	19.0 V	16.5 V

## TECHNICAL DRAWINGS



Stelpro reserves the right to modify at any time the description, manufacturing, or price of its products. Additionally, Stelpro may apply restocking fees or refuse a refund based on one or more of the following criteria: optional color, custom product, assembly with low-demand options. For the latest product information and prices regarding the products, please visit the website [www.stelpro.com](http://www.stelpro.com).



Stelpro reserves the right to modify at any time the description, manufacturing, or price of its products. **Additionally, Stelpro may apply restocking fees or refuse a refund based on one or more of the following criteria: optional color, custom product, assembly with low-demand options.** For the latest product information and prices regarding the products, please visit the website [www.stelpro.com](http://www.stelpro.com).