

AB | BRAVA™

ELECTRIC BASEBOARD



BRAVA



THE REFERENCE ON THE MARKET

The B baseboard's reputation is well established. It's simply the most recognized and sought-after baseboard on the market. Now known as the BRAVA, this strong and durable baseboard stands out thanks to its rounded corners and unique, no-end-cap, one-piece design.

ROUNDED CORNERS

QUICK AND EASY INSTALLATION

STRONG CABINET

ONE-PIECE CONSTRUCTION

MAY BE CONTROLLED BY A BUILT-IN OR WALL THERMOSTAT (NOT INCLUDED)

COLORS

- **standard:** white, soft white
- **ORORA (optional):** refer to www.stelpro.com/en-US/orora

FINISH

- epoxy-polyester powdercoat

MANUFACTURING

- 22-gauge steel casing able to support 75 kg (165 lb) at its centre
- full-length thermal protection with automatic reset
- cabinet designed to ensure optimal hot air distribution
- full-length wireway

ELEMENT

- single tubular, stainless steel sheathed element with boxed aluminum fins for improved heat dissipation; the element is securely fastened at its centre, floating in nylon sleeves at each end, eliminating expansion and contraction noises

CONTROL

- built-in thermostat installed in the left or right junction box (optional)
- single pole electronic thermostat installed in the left or right junction box (optional)
- wall thermostat (not included) – the use of an electronic thermostat is strongly recommended
- low voltage relay kit installed in the left junction box only (optional)

INSTALLATION

- surface mounted
- knockouts for the BX and clamps for the NMD cables located at each end
- mounting holes spaced at 1-inch intervals along the top and the bottom of the unit

WARRANTY

- five years, *three years on electronic components and lifetime warranty on heating element (for original owner)

IDEAL FOR:

kitchen, living room, bedroom, office, basement, commercial space

°STELPRO

°STELPRO reserves the right to modify descriptions, manufacturing specifications or prices without prior notice. No returns accepted on optional-color products. For all the latest models and prices, please refer to our website at www.stelpro.com.



FC_B_US_190919

TECHNICAL SPECIFICATIONS

DENSITY OF 250 W PER LINEAR FOOT	POWER		VOLTAGE	LENGTH	WEIGHT
CODE	WATTS	BTU/H	VOLTS	IN.	LB
AB0301	300	1024	120	19 7/8	5
AB0308	300	1024	208	19 7/8	5
AB0302	300/225	1024/768	240/208	19 7/8	5
AB0501	500	1706	120	27 7/8	7
AB0508	500	1706	208	27 7/8	7
AB0502	500/375	1706/1280	240/208	27 7/8	7
AB0507	500/375/280	1706/1280/956	277/240/208	27 7/8	7
AB0751	750	2560	120	37 5/8	9
AB0758	750	2560	208	37 5/8	9
AB0752	750/560	2560/1911	240/208	37 5/8	9
AB0757	750/560/425	2560/1911/1450	277/240/208	37 5/8	9
AB41001	1000	3413	120	48	11
AB41008	1000	3413	208	48	11
AB41002	1000/750	3413/2560	240/208	48	11
AB41007	1000/750/565	3413/2560/1928	277/240/208	48	11
AB51251	1250	4266	120	60	14
AB51258	1250	4266	208	60	14
AB51252	1250/940	4266/3208	240/208	60	14
AB51257	1250/940/705	4266/3208/2406	277/240/208	60	14
AB61501	1500	5119	120	72	16
AB61508	1500	5119	208	72	16
AB61502	1500/1125	5119/3839	240/208	72	16
AB61507	1500/1125/845	5119/3839/2884	277/240/208	72	16
AB1758	1750	5972	208	76	18
AB1752	1750/1315	5972/4488	240/208	76	18
AB1757	1750/1300/985	5972/4437/3361	277/240/208	76	18
AB82008	2000	6825	208	96	20
AB82002	2000/1500	6825/5119	240/208	96	20
AB82007	2000/1500/1125	6825/5119/3839	277/240/208	96	20
AB82258	2250	7679	208	96	22
AB82252	2250/1690	7679/5767	240/208	96	22
AB82257	2250/1690/1265	7679/5767/4317	277/240/208	96	22
AB2508	2500	8532	208	102 5/8	24
AB2502	2500/1875	8532/6399	240/208	102 5/8	24
AB2507	2500/1875/1405	8532/6399/4795	277/240/208	102 5/8	24

Add W for white or SW for soft white (consult the optional colors chart or contact your °STELPRO representative for all other colors).

Add HA for the high altitude version

Please note that the width of the units may vary by more or less 1/16 in. 480 V available upon request



ACCESSORIES

PRODUCT	DESCRIPTION
B1T1EFR*	built-in electronic thermostat in Fahrenheit (right side installation only) [120 V-347 V / max 2500 W (12.5 A)]. Factory installed upon request.
B1T1*	built-in single pole thermostat [120 V-600 V]
B2T1*	built-in double pole thermostat [120 V-600 V]
B2T1TP*	built-in tamper-proof double pole thermostat [120 V-600 V]
BRE153*	built-in electronic low voltage relay [15 A @ 120 V-347 V]
BRE156*	built-in electronic low voltage relay [6 A @ 600 V]
BRE153T*	built-in electronic low voltage relay c/w transformer 24 V [15 A @ 208 V-347 V]
BDIS277**	disconnect switch [20 A @ 120 V-277 V]
BEXT*	extension (4 3/4 in.) to use with three integrated controls
BP*	spray paint white or soft white

Electronic relays can receive a PWM (pulsed width modulation) or digital (on/off) signal.

* Add W for white or SW for soft white

** Factory installation only

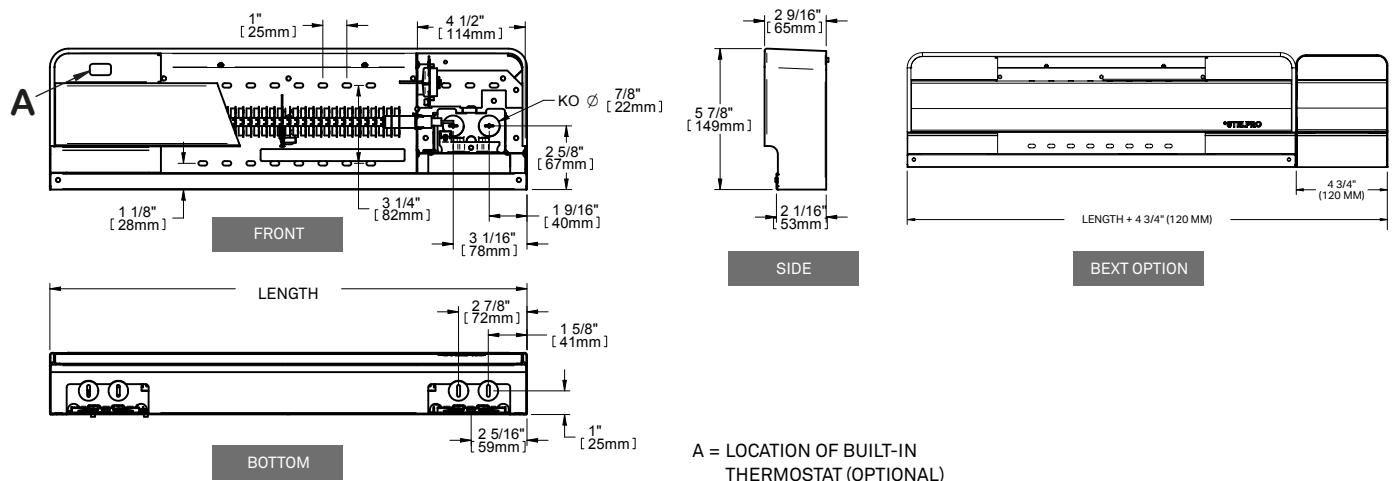


**THERMAL PROTECTION HIDDEN
INSIDE THE JUNCTION BOX**



**ULTRA-PRECISE ELECTRONIC
THERMOSTAT (OPTIONAL)**

TECHNICAL DRAWINGS





*STELPRO reserves the right to modify descriptions, manufacturing specifications or prices without prior notice. No returns accepted on optional-color products. For all the latest models and prices, please refer to our website at www.stelpro.com.