



LED AREA LIGHT

► **DESIGN & OPTIONS** - DESIGN & OPTIONS. LED AREA LIGHT has durable die-cast aluminum housing and are 3G vibration rated to ensure strength of construction and longevity. The housing is sealed against moisture and environmental contaminants and is designed to maximize heat dissipation and protect the light chips. The type III-M lens is designed to maximize efficiency and spacing. You can choose 120-277V or 277-480V with a 1-10V dimmable driver and 3000K, 4000K or 5000K color temperature with a BRONZE or WHITE finish.

► **INSTALLATION** - This fixture can be pole, post, or wall mounted using the following brackets: slip fitter bracket, arm bracket, floodlight bracket, or full trunnion bracket. All brackets are sold separately. Refer to install instructions for more information.

► **APPLICATION** - This LED AREA LIGHT is ideal for commercial and industrial outdoor lighting. Common uses for this fixture include: roadway lighting, highway lighting, sport lighting, parks, parking lots, buildings, backyards, walkways, and many other applications. It is also Wet location rated and can operate in temperatures ranging from -40+140°F (-40+60°C), allowing it to be utilized in a wide variety of applications and climates.

► **ENERGY SAVING & EFFICIENCY** - This fixture provides a lumen output equal to MH/HPS and can cut your electric bill by up to 80% instantly. With a lifespan of 72,000 hours, these fixtures are made to last decades under normal operation! This fixture will save you a significant amount of money in its lifetime.

► **CERTIFICATION & WARRANTY** - Buy with confidence: ASD provides a 5-year warranty along with UL and DLC Premium certifications to guarantee top quality products and safety!

Top US certifications allow participation in rebates; please check the rebate programs available in your state.

Catalog number	
Notes	
Type	



PRODUCT LEGEND:

Family	Modification	Voltage	Watts	Dimmable	CCT	Finish	Series	Bracket
ASD-LSB	2	XX	XX	X	XX	X	XXX	XX
LED Area light		Blank = 120-277 V HV = 277-480 V	60 = 60 W 100 = 100 W 150 = 150 W 185 = 185 W 240 = 240 W 300 = 300 W 400 = 400 W 500 = 500 W	D = Dimmable	30 = 3,000 K 40 = 4,000 K 50 = 5,000 K	B = Bronze W = White	Blank = Premium PRM = Premium	Blank = Without bracket SF = Slip Fitter AR = Arm

LED AREA LIGHT:

Model	Watts	Voltage	Dimmable	Lumens	CCT	Finish	Dimensions (LxWxH)	Cord	Bracket
ASD-LSB2-60D50B-PRM	60 W	120-277 V	1-10 V	8,353 lm	5,000 K	Bronze	16 15/16" x 11 15/16" x 4 1/16"	4 ft	-
ASD-LSB2-60D50W-PRM	60 W	120-277 V	1-10 V	8,353 lm	5,000 K	White	16 15/16" x 11 15/16" x 4 1/16"	4 ft	-
ASD-LSB2-100D30B-PRM	100 W	120-277 V	1-10 V	12,733 lm	3,000 K	Bronze	16 15/16" x 11 15/16" x 4 1/16"	4 ft	-
ASD-LSB2-100D40B-PRM	100 W	120-277 V	1-10 V	13,006 lm	4,000 K	Bronze	16 15/16" x 11 15/16" x 4 1/16"	4 ft	-
ASD-LSB2-100D50B-PRM	100 W	120-277 V	1-10 V	13,852 lm	5,000 K	Bronze	16 15/16" x 11 15/16" x 4 1/16"	4 ft	-
ASD-LSB2-100D50B-SF	100 W	120-277 V	1-10 V	13,852 lm	5,000 K	Bronze	25 1/4" x 11 15/16" x 4 1/16"	4 ft	Slip Fitter
ASD-LSB2-100D50B-AR	100 W	120-277 V	1-10 V	13,852 lm	5,000 K	Bronze	23 1/8" x 11 15/16" x 5 7/16"	4 ft	Arm
ASD-LSB2-150D30B-PRM	150 W	120-277 V	1-10 V	19,167 lm	3,000 K	Bronze	16 15/16" x 11 15/16" x 4 1/16"	4 ft	-
ASD-LSB2-150D40B-PRM	150 W	120-277 V	1-10 V	20,135 lm	4,000 K	Bronze	16 15/16" x 11 15/16" x 4 1/16"	4 ft	-
ASD-LSB2-150D50B-PRM	150 W	120-277 V	1-10 V	20,316 lm	5,000 K	Bronze	16 15/16" x 11 15/16" x 4 1/16"	4 ft	-
ASD-LSB2-150D50W-PRM	150 W	120-277 V	1-10 V	20,316 lm	5,000 K	White	16 15/16" x 11 15/16" x 4 1/16"	4 ft	-
ASD-LSB2-150D50B-SF	150 W	120-277 V	1-10 V	20,316 lm	5,000 K	Bronze	25 1/4" x 11 15/16" x 4 1/16"	4 ft	Slip Fitter
ASD-LSB2-150D50B-AR	150 W	120-277 V	1-10 V	20,316 lm	5,000 K	Bronze	23 1/8" x 11 15/16" x 5 7/16"	4 ft	Arm
ASD-LSB2-185D30B-PRM	185 W	120-277 V	1-10 V	24,021 lm	3,000 K	Bronze	16 15/16" x 11 15/16" x 4 1/16"	4 ft	-
ASD-LSB2-185D50B-PRM	185 W	120-277 V	1-10 V	24,756 lm	5,000 K	Bronze	16 15/16" x 11 15/16" x 4 1/16"	4 ft	-
ASD-LSB2-185D50W-PRM	185 W	120-277 V	1-10 V	24,756 lm	5,000 K	White	16 15/16" x 11 15/16" x 4 1/16"	4 ft	-
ASD-LSB2-185D50B-SF	185 W	120-277 V	1-10 V	24,756 lm	5,000 K	Bronze	25 1/4" x 11 15/16" x 4 1/16"	4 ft	Slip Fitter
ASD-LSB2-185D50B-AR	185 W	120-277 V	1-10 V	24,756 lm	5,000 K	Bronze	23 1/8" x 11 15/16" x 5 7/16"	4 ft	Arm
ASD-LSB2-240D50B-PRM	240 W	120-277 V	1-10 V	32,264 lm	5,000 K	Bronze	23 1/2" x 11 15/16" x 4 1/16"	4 ft	-

For most up-to-date spec sheets please refer to asd-lighting.com

ASD LIGHTING CORP

E-mail: orders@asd-lighting.com | Web site: www.asd-lighting.com





LED AREA LIGHT

Model	Watts	Voltage	Dimmable	Lumens	CCT	Finish	Dimensions (LxWxH)	Cord	Bracket
ASD-LSB2-300D30B-PRM	300 W	120-277 V	1-10 V	38,371 lm	3,000 K	Bronze	23 1/2" x 11 15/16" x 4 1/16"	4 ft	-
ASD-LSB2-300D40B-PRM	300 W	120-277 V	1-10 V	40,400 lm	4,000 K	Bronze	23 1/2" x 11 15/16" x 4 1/16"	4 ft	-
ASD-LSB2-300D50B-PRM	300 W	120-277 V	1-10 V	40,970 lm	5,000 K	Bronze	23 1/2" x 11 15/16" x 4 1/16"	4 ft	-
ASD-LSB2-300D50W-PRM	300 W	120-277 V	1-10 V	40,970 lm	5,000 K	White	23 1/2" x 11 15/16" x 4 1/16"	4 ft	-
ASD-LSB2-300D50B-SF	300 W	120-277 V	1-10 V	40,970 lm	5,000 K	Bronze	31 7/8" x 11 15/16" x 4 1/16"	4 ft	Slip Fitter
ASD-LSB2-300D50B-AR	300 W	120-277 V	1-10 V	40,970 lm	5,000 K	Bronze	29 11/16" x 11 15/16" x 5 3/8"	4 ft	Arm
ASD-LSB2-400D40B-PRM	400 W	120-277 V	1-10 V	50,110 lm	4,000 K	Bronze	30 5/16" x 13 1/2" x 5 5/16"	4 ft	-
ASD-LSB2-400D50B-PRM	400 W	120-277 V	1-10 V	52,913 lm	5,000 K	Bronze	30 5/16" x 13 1/2" x 5 5/16"	4 ft	-
ASD-LSB2-500D50B-PRM	500 W	120-277 V	1-10 V	66,104 lm	5,000 K	Bronze	30 3/16" x 13 3/8" x 4 13/16"	4 ft	-
ASD-LSB2-500D50W-PRM	500 W	120-277 V	1-10 V	66,104 lm	5,000 K	White	30 3/16" x 13 3/8" x 4 13/16"	4 ft	-
ASD-LSB2HV-100D50B-PRM	100 W	277-480 V	0-10 V	13,185 lm	5,000 K	Bronze	16 15/16" x 11 15/16" x 4 1/16"	4 ft	-
ASD-LSB2HV-150D50B-PRM	150 W	277-480 V	0-10 V	19,585 lm	5,000 K	Bronze	16 15/16" x 11 15/16" x 4 1/16"	4 ft	-
ASD-LSB2HV-150D50W-PRM	150 W	277-480 V	0-10 V	19,585 lm	5,000 K	White	16 15/16" x 11 15/16" x 4 1/16"	4 ft	-
ASD-LSB2HV-185D50B-PRM	185 W	277-480 V	0-10 V	24,386 lm	5,000 K	Bronze	16 15/16" x 11 15/16" x 4 1/16"	4 ft	-
ASD-LSB2HV-185D50W-PRM	185 W	277-480 V	0-10 V	24,386 lm	5,000 K	White	16 15/16" x 11 15/16" x 4 1/16"	4 ft	-
ASD-LSB2HV-240D50B-PRM	240 W	277-480 V	0-10 V	31,618 lm	5,000 K	Bronze	23 1/2" x 11 15/16" x 4 1/16"	4 ft	-
ASD-LSB2HV-300D50B-PRM	300 W	277-480 V	0-10 V	40,136 lm	5,000 K	Bronze	23 1/2" x 11 15/16" x 4 1/16"	4 ft	-
ASD-LSB2HV-300D50W-PRM	300 W	277-480 V	0-10 V	40,136 lm	5,000 K	White	23 1/2" x 11 15/16" x 4 1/16"	4 ft	-
ASD-LSB2HV-400D50B-PRM	400 W	277-480 V	0-10 V	56,865 lm	5,000 K	Bronze	30 5/16" x 13 1/2" x 5 5/16"	4 ft	-
ASD-LSB2HV-500D50B-PRM	500 W	277-480 V	0-10 V	69,582 lm	5,000 K	Bronze	30 5/16" x 13 1/2" x 5 5/16"	4 ft	-

PRODUCT SPECIFICATIONS:

Construction & Materials									
Lens	Polycarbonate (60/100/150/185W - 1 lens, 240/300W - 2 lens, 400/500W - 3 lens)								
Housing	Die-Cast Aluminum								
Finish	Bronze, White								
Weight	ASD-LSB2-60D50B-PRM	8.1 lb (3.7 kg)	ASD-LSB2-150D50B-PRM	9 lb (4.1 kg)	ASD-LSB2-300D30B-PRM	16.6 lb (7.5 kg)	ASD-LSB2HV-100D50B-PRM	8.8 lb (4 kg)	
	ASD-LSB2-60D50W-PRM		ASD-LSB2-150D50W-PRM	ASD-LSB2-300D40B-PRM	ASD-LSB2HV-150D50B-PRM				
	ASD-LSB2-100D30B-PRM		ASD-LSB2-150D50B-SF	ASD-LSB2-300D50B-PRM	ASD-LSB2HV-150D50W-PRM				
	ASD-LSB2-100D40B-PRM	8.8 lb (4 kg)	ASD-LSB2-150D50B-AR	10.8 lb (4.9 kg)	ASD-LSB2-300D50W-PRM	19.9 lb (9 kg)	ASD-LSB2HV-185D50B-PRM	9 lb (4.1 kg)	
	ASD-LSB2-100D50B-PRM		ASD-LSB2-185D30B-PRM	ASD-LSB2-300D50B-SF	ASD-LSB2HV-185D50W-PRM				
	ASD-LSB2-100D50B-SF	12.2 lb (5.5 kg)	ASD-LSB2-185D50B-PRM	9 lb (4.1 kg)	ASD-LSB2-300D50B-AR	18.4 lb (8.3 kg)	ASD-LSB2HV-240D50B-PRM	15.5 lb (7 kg)	
	ASD-LSB2-100D50B-AR	10.6 lb (4.8 kg)	ASD-LSB2-185D50W-PRM	12.3 lb (5.6 kg)	ASD-LSB2-400D40B-PRM	24.3 lb (11 kg)	ASD-LSB2HV-300D50B-PRM	16.6 lb (7.5 kg)	
	ASD-LSB2-150D30B-PRM	ASD-LSB2-185D50B-SF	ASD-LSB2-400D50B-PRM		ASD-LSB2HV-300D50W-PRM				
	ASD-LSB2-150D40B-PRM	9 lb (4.1 kg)	ASD-LSB2-185D50B-AR		10.8 lb (4.9 kg)	ASD-LSB2-500D50B-PRM	22.5 lb (10.2 kg)	ASD-LSB2HV-400D50B-PRM	24.3 lb (11 kg)
	ASD-LSB2-240D50B-PRM		15.5 lb (7 kg)	ASD-LSB2-500D50W-PRM	ASD-LSB2HV-500D50B-PRM				
Environmental System									
Work Environment	Suitable for Wet Locations, IP66								
Operating Temperature	-40°F to 140°F (-40°C to 60°C)								
L-70 Life	R > 72,000 hrs; C > 146,000 hrs								
Optical System									
Luminous Flux	ASD-LSB2-60D50B-PRM	8,353 lm	ASD-LSB2-150D50B-PRM	20,316 lm	ASD-LSB2-300D30B-PRM	38,371 lm	ASD-LSB2HV-100D50B-PRM	13,185 lm	
	ASD-LSB2-60D50W-PRM		ASD-LSB2-150D50W-PRM		ASD-LSB2-300D40B-PRM	40,400 lm	ASD-LSB2HV-150D50B-PRM	19,585 lm	
	ASD-LSB2-100D30B-PRM		ASD-LSB2-150D50B-SF		ASD-LSB2-300D50B-PRM	40,970 lm	ASD-LSB2HV-150D50W-PRM	24,386 lm	
	ASD-LSB2-100D40B-PRM	13,006 lm	ASD-LSB2-150D50B-AR	ASD-LSB2-300D50W-PRM	ASD-LSB2HV-185D50B-PRM				
	ASD-LSB2-100D50B-PRM	13,852 lm	ASD-LSB2-185D30B-PRM	24,021 lm	ASD-LSB2-300D50B-SF		ASD-LSB2HV-185D50W-PRM	31,618 lm	
	ASD-LSB2-100D50B-SF		ASD-LSB2-185D50B-PRM	ASD-LSB2-300D50B-AR	ASD-LSB2HV-240D50B-PRM				
	ASD-LSB2-100D50B-AR	19,167 lm	ASD-LSB2-185D50W-PRM	24,756 lm	ASD-LSB2-400D40B-PRM	50,110 lm	ASD-LSB2HV-300D50B-PRM	40,136 lm	
	ASD-LSB2-150D30B-PRM		ASD-LSB2-185D50B-SF		ASD-LSB2-400D50B-PRM	52,913 lm	ASD-LSB2HV-300D50W-PRM		
	ASD-LSB2-150D40B-PRM	20,135 lm	ASD-LSB2-185D50B-AR	32,264 lm	ASD-LSB2-500D50B-PRM	66,104 lm	ASD-LSB2HV-400D50B-PRM	56,865 lm	
		ASD-LSB2-240D50B-PRM	ASD-LSB2-500D50W-PRM		ASD-LSB2HV-500D50B-PRM		69,582 lm		
Color Temperature	3,000 K, 4,000 K, 5,000 K								
CRI	> 80								
Electrical System									
Input Voltage	Regular Voltage: 120-277 V						High Voltage: 277-480 V		
Max input current	ASD-LSB2-60D50B-PRM	0.7 A	ASD-LSB2-150D50B-PRM	1.7 A	ASD-LSB2-300D30B-PRM	3.4 A	ASD-LSB2HV-100D50B-PRM	0.36 A	
	ASD-LSB2-60D50W-PRM		ASD-LSB2-150D50W-PRM		ASD-LSB2-300D40B-PRM		ASD-LSB2HV-150D50B-PRM		
	ASD-LSB2-100D30B-PRM		ASD-LSB2-150D50B-SF		ASD-LSB2-300D50B-PRM		ASD-LSB2HV-150D50W-PRM		
	ASD-LSB2-100D40B-PRM	ASD-LSB2-150D50B-AR	ASD-LSB2-300D50W-PRM	ASD-LSB2HV-185D50B-PRM					
	ASD-LSB2-100D50B-PRM	1.2 A	ASD-LSB2-185D30B-PRM	2.1 A	ASD-LSB2-300D50B-SF	4 A	ASD-LSB2HV-185D50W-PRM	0.8 A	
	ASD-LSB2-100D50B-SF		ASD-LSB2-185D50B-PRM		ASD-LSB2-300D50B-AR		ASD-LSB2HV-240D50B-PRM		
	ASD-LSB2-100D50B-AR	1.7 A	ASD-LSB2-185D50W-PRM	2.7 A	ASD-LSB2-400D40B-PRM	3.33 A	ASD-LSB2HV-300D50B-PRM	3.4 A	
	ASD-LSB2-150D30B-PRM		ASD-LSB2-185D50B-SF		ASD-LSB2-400D50B-PRM		ASD-LSB2HV-300D50W-PRM		
	ASD-LSB2-150D40B-PRM		ASD-LSB2-185D50B-AR		ASD-LSB2-500D50B-PRM	5.6 A	ASD-LSB2HV-400D50B-PRM	1.44 A	
		ASD-LSB2-240D50B-PRM	ASD-LSB2-500D50W-PRM	ASD-LSB2HV-500D50B-PRM	1.81 A				

For most up-to-date spec sheets please refer to asd-lighting.com

ASD LIGHTING CORP

E-mail: orders@asd-lighting.com | Web site: www.asd-lighting.com





LED AREA LIGHT

Electrical System											
Inrush current (Action time)	ASD-LSB2-60D50B-PRM	80 A (0.75 S)	ASD-LSB2-150D50B-PRM	130 A (0.75 S)	ASD-LSB2-300D30B-PRM	130 A (0.75 S)	ASD-LSB2HV-100D50B-PRM	25 A (0.9 S)			
	ASD-LSB2-60D50W-PRM		ASD-LSB2-150D50W-PRM		ASD-LSB2-300D40B-PRM		ASD-LSB2HV-150D50B-PRM	55 A (0.75 S)			
	ASD-LSB2-100D30B-PRM	100 A (0.75 S)	ASD-LSB2-150D50B-SF		ASD-LSB2-300D50B-PRM	120 A (0.56 S)	ASD-LSB2HV-150D50W-PRM	90 A (0.75 S)			
	ASD-LSB2-100D40B-PRM		ASD-LSB2-150D50B-AR		ASD-LSB2-300D50W-PRM		ASD-LSB2HV-185D50B-PRM				
	ASD-LSB2-100D50B-PRM		ASD-LSB2-185D30B-PRM		ASD-LSB2-300D50B-SF		ASD-LSB2HV-185D50W-PRM				
	ASD-LSB2-100D50B-SF	130 A (0.75 S)	ASD-LSB2-185D50B-PRM		ASD-LSB2-300D50B-AR	260 A (0.75 S)	ASD-LSB2HV-240D50B-PRM	50 A (0.84 S)			
	ASD-LSB2-100D50B-AR		ASD-LSB2-185D50W-PRM		ASD-LSB2-400D40B-PRM		ASD-LSB2HV-300D50B-PRM				
	ASD-LSB2-150D30B-PRM		ASD-LSB2-185D50B-SF		ASD-LSB2-400D50B-PRM		ASD-LSB2HV-300D50W-PRM				
	ASD-LSB2-150D40B-PRM		ASD-LSB2-185D50B-AR		ASD-LSB2-500D50B-PRM		ASD-LSB2HV-400D50B-PRM				
		ASD-LSB2-240D50B-PRM	ASD-LSB2-500D50W-PRM		ASD-LSB2HV-500D50B-PRM						
AC input range	Regular Voltage: min 90 V - max 305 V						High Voltage: min 249 V - max 528 V				
Off State Power	0 W										
Surge protection	ASD-LSB2-60D50B-PRM	6 kV	ASD-LSB2-150D50B-PRM	10 kV	ASD-LSB2-300D30B-PRM	10 kV	ASD-LSB2HV-100D50B-PRM	10 kV			
	ASD-LSB2-60D50W-PRM		ASD-LSB2-150D50W-PRM		ASD-LSB2-300D40B-PRM		ASD-LSB2HV-150D50B-PRM				
	ASD-LSB2-100D30B-PRM	10 kV	ASD-LSB2-150D50B-SF		ASD-LSB2-300D50B-PRM	ASD-LSB2HV-150D50W-PRM					
	ASD-LSB2-100D40B-PRM		ASD-LSB2-150D50B-AR		ASD-LSB2-300D50W-PRM	ASD-LSB2HV-185D50B-PRM					
	ASD-LSB2-100D50B-PRM		ASD-LSB2-185D30B-PRM		ASD-LSB2-300D50B-SF	ASD-LSB2HV-185D50W-PRM					
	ASD-LSB2-100D50B-SF		ASD-LSB2-185D50B-PRM		ASD-LSB2-300D50B-AR	ASD-LSB2HV-240D50B-PRM					
	ASD-LSB2-100D50B-AR		ASD-LSB2-185D50W-PRM		ASD-LSB2-400D40B-PRM	ASD-LSB2HV-300D50B-PRM					
	ASD-LSB2-150D30B-PRM		ASD-LSB2-185D50B-SF		ASD-LSB2-400D50B-PRM	ASD-LSB2HV-300D50W-PRM					
	ASD-LSB2-150D40B-PRM		ASD-LSB2-185D50B-AR		ASD-LSB2-500D50B-PRM	ASD-LSB2HV-400D50B-PRM					
		ASD-LSB2-240D50B-PRM	ASD-LSB2-500D50W-PRM		ASD-LSB2HV-500D50B-PRM						
Power Consumption	ASD-LSB2-60D50B-PRM	60 W	ASD-LSB2-150D50B-PRM		150 W	ASD-LSB2-300D30B-PRM	300 W		ASD-LSB2HV-100D50B-PRM	100 W	
	ASD-LSB2-60D50W-PRM		ASD-LSB2-150D50W-PRM			ASD-LSB2-300D40B-PRM			ASD-LSB2HV-150D50B-PRM	150 W	
	ASD-LSB2-100D30B-PRM	100 W	ASD-LSB2-150D50B-SF	ASD-LSB2-300D50B-PRM		ASD-LSB2HV-150D50W-PRM	185 W				
	ASD-LSB2-100D40B-PRM		ASD-LSB2-150D50B-AR	ASD-LSB2-300D50W-PRM		ASD-LSB2HV-185D50B-PRM					
	ASD-LSB2-100D50B-PRM		ASD-LSB2-185D30B-PRM	ASD-LSB2-300D50B-SF		ASD-LSB2HV-185D50W-PRM					
	ASD-LSB2-100D50B-SF		ASD-LSB2-185D50B-PRM	ASD-LSB2-300D50B-AR		ASD-LSB2HV-240D50B-PRM					
	ASD-LSB2-100D50B-AR	150 W	ASD-LSB2-185D50W-PRM	ASD-LSB2-400D40B-PRM		400 W	ASD-LSB2HV-300D50B-PRM	240 W			
	ASD-LSB2-150D30B-PRM		ASD-LSB2-185D50B-SF	ASD-LSB2-400D50B-PRM		ASD-LSB2HV-300D50W-PRM	300 W				
	ASD-LSB2-150D40B-PRM		ASD-LSB2-185D50B-AR	ASD-LSB2-500D50B-PRM		ASD-LSB2HV-400D50B-PRM	400 W				
		ASD-LSB2-240D50B-PRM	240 W	ASD-LSB2-500D50W-PRM		500 W	ASD-LSB2HV-500D50B-PRM	500 W			
Power Factor	> 0.9										
Output voltage	ASD-LSB2-60D50B-PRM	90-130 V	ASD-LSB2-150D50B-PRM	180-260 V		ASD-LSB2-300D30B-PRM	180-260 V	ASD-LSB2HV-100D50B-PRM	22-56 V		
	ASD-LSB2-60D50W-PRM		ASD-LSB2-150D50W-PRM		ASD-LSB2-300D40B-PRM	ASD-LSB2HV-150D50B-PRM					
	ASD-LSB2-100D30B-PRM		ASD-LSB2-150D50B-SF		ASD-LSB2-300D50B-PRM	ASD-LSB2HV-150D50W-PRM					
	ASD-LSB2-100D40B-PRM		ASD-LSB2-150D50B-AR		ASD-LSB2-300D50W-PRM	ASD-LSB2HV-185D50B-PRM					
	ASD-LSB2-100D50B-PRM		ASD-LSB2-185D30B-PRM		ASD-LSB2-300D50B-SF	ASD-LSB2HV-185D50W-PRM					
	ASD-LSB2-100D50B-SF		ASD-LSB2-185D50B-PRM		ASD-LSB2-300D50B-AR	ASD-LSB2HV-240D50B-PRM					
	ASD-LSB2-100D50B-AR		ASD-LSB2-185D50W-PRM		ASD-LSB2-400D40B-PRM	24-64 V	ASD-LSB2HV-300D50B-PRM				
	ASD-LSB2-150D30B-PRM	180-260 V	ASD-LSB2-185D50B-SF		ASD-LSB2-400D50B-PRM	64 V	ASD-LSB2HV-300D50W-PRM				
	ASD-LSB2-150D40B-PRM		ASD-LSB2-185D50B-AR		ASD-LSB2-500D50B-PRM	180-260 V	ASD-LSB2HV-400D50B-PRM				
		ASD-LSB2-240D50B-PRM	ASD-LSB2-500D50W-PRM		ASD-LSB2HV-500D50B-PRM						
Max output current	ASD-LSB2-60D50B-PRM	470 mA	ASD-LSB2-150D50B-PRM		630 mA	ASD-LSB2-300D30B-PRM	1.26 A	ASD-LSB2HV-100D50B-PRM		2 A	
	ASD-LSB2-60D50W-PRM		ASD-LSB2-150D50W-PRM			ASD-LSB2-300D40B-PRM		ASD-LSB2HV-150D50B-PRM		3 A	
	ASD-LSB2-100D30B-PRM	820 mA	ASD-LSB2-150D50B-SF	ASD-LSB2-300D50B-PRM		ASD-LSB2HV-150D50W-PRM		3.7 A			
	ASD-LSB2-100D40B-PRM		ASD-LSB2-150D50B-AR	ASD-LSB2-300D50W-PRM		ASD-LSB2HV-185D50B-PRM		4.75 A			
	ASD-LSB2-100D50B-PRM		ASD-LSB2-185D30B-PRM	ASD-LSB2-300D50B-SF		ASD-LSB2HV-185D50W-PRM					
	ASD-LSB2-100D50B-SF		ASD-LSB2-185D50B-PRM	ASD-LSB2-300D50B-AR		ASD-LSB2HV-240D50B-PRM					
	ASD-LSB2-100D50B-AR	630 mA	ASD-LSB2-185D50W-PRM	ASD-LSB2-400D40B-PRM		8.4 A	ASD-LSB2HV-300D50B-PRM	6 A			
	ASD-LSB2-150D30B-PRM		ASD-LSB2-185D50B-SF	ASD-LSB2-400D50B-PRM		2.1 A	ASD-LSB2HV-300D50W-PRM				
	ASD-LSB2-150D40B-PRM		ASD-LSB2-185D50B-AR	ASD-LSB2-500D50B-PRM			ASD-LSB2HV-400D50B-PRM	10 A			
		ASD-LSB2-240D50B-PRM	950 mA	ASD-LSB2-500D50W-PRM							
LED Driver Class	ASD-LSB2-60D50B-PRM	Non-Isolated, Class P	ASD-LSB2-150D50B-PRM	Non-Isolated		ASD-LSB2-300D30B-PRM	Non-Isolated	ASD-LSB2HV-100D50B-PRM	Isolated		
	ASD-LSB2-60D50W-PRM		ASD-LSB2-150D50W-PRM			ASD-LSB2-300D40B-PRM		ASD-LSB2HV-150D50B-PRM			
	ASD-LSB2-100D30B-PRM	Non-Isolated	ASD-LSB2-150D50B-SF		ASD-LSB2-300D50B-PRM	ASD-LSB2HV-150D50W-PRM					
	ASD-LSB2-100D40B-PRM		ASD-LSB2-150D50B-AR		ASD-LSB2-300D50W-PRM	ASD-LSB2HV-185D50B-PRM					
	ASD-LSB2-100D50B-PRM		ASD-LSB2-185D30B-PRM		ASD-LSB2-300D50B-SF	ASD-LSB2HV-185D50W-PRM					
	ASD-LSB2-100D50B-SF		ASD-LSB2-185D50B-PRM		ASD-LSB2-300D50B-AR	ASD-LSB2HV-240D50B-PRM					
	ASD-LSB2-100D50B-AR		ASD-LSB2-185D50W-PRM		ASD-LSB2-400D40B-PRM	Class 1	ASD-LSB2HV-300D50B-PRM				
	ASD-LSB2-150D30B-PRM		ASD-LSB2-185D50B-SF		ASD-LSB2-400D50B-PRM		ASD-LSB2HV-300D50W-PRM				
	ASD-LSB2-150D40B-PRM		ASD-LSB2-185D50B-AR		ASD-LSB2-500D50B-PRM	Non-Isolated	ASD-LSB2HV-400D50B-PRM				
		ASD-LSB2-240D50B-PRM	ASD-LSB2-500D50W-PRM		ASD-LSB2HV-500D50B-PRM						

For most up-to-date spec sheets please refer to asd-lighting.com

ASD LIGHTING CORP







E-mail: orders@asd-lighting.com | Web site: www.asd-lighting.com





LED AREA LIGHT

Effective Projected Area (EPA) Ratings

Fixture Qty						
	Single	Double 180°	Double 90°	Triple 90°	Triple 120°	Quad 90°
EPA of 60/100/150/185W	0.23	0.46	0.4	0.63	0.73	0.73
EPA of 240/300W	0.42	0.84	0.72	1.14	1.54	1.54
EPA of 400/500W	0.58	1.16	1	1.58	2.13	2.13

Dimming compatible controls

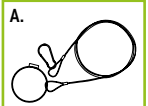
Brand	Models
Maxxima	MEW-DM600LV
Eaton	DF10P-C1
Keygma	KGM-1A010V
Leviton	IP710-DLZ
Lutron	DVSTV-WH

Warranty & Certifications

5-year limited warranty
DesignLights Consortium (DLC) listed (Classification: Premium)
Main: Outdoor Luminaires;
General Application: Mid/High/Very high output
*Very high output for models from 240W and higher;
Primary Use: Outdoor Pole/Arm-Mounted Area and Roadway Luminaires
cULus certified

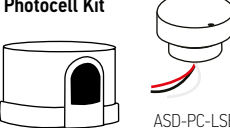
PACKAGE CONTENTS:

Description	Q-ty
LED Area Light Fixture	1
Safety cable (A) for 400W/500W models only	1
Box	1
Cut sheet	2



ACCESSORIES (sold separately):

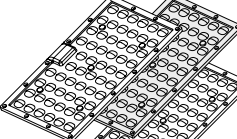
Photocell Kit



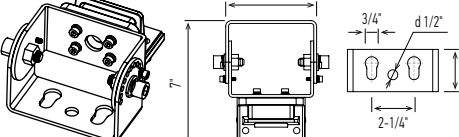
ASD-PC-LSB
ASD-PC-LSBHV

Clear Lens

type II-M
ASD-L2M-LSB
type IV-M
ASD-L4M-LSB
type V-M
ASD-L5M-LSB



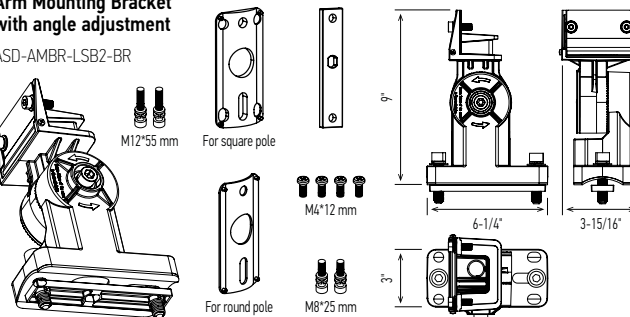
Full Trunnion Mounting Bracket



ASD-TRB-LSB2-BR
ASD-TRB-LSB2-WH

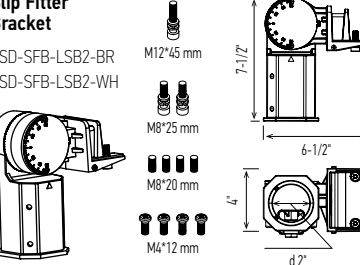
Arm Mounting Bracket with angle adjustment

ASD-AMBR-LSB2-BR



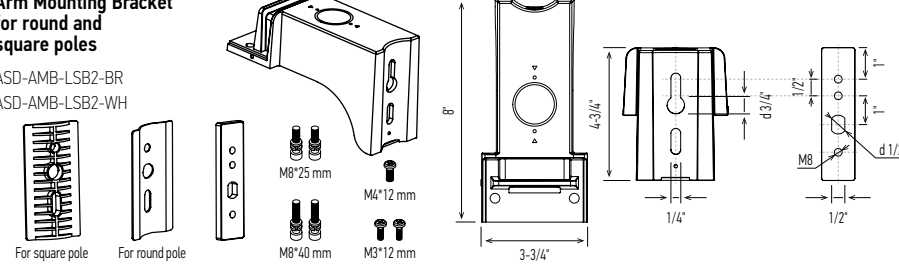
Slip Fitter Bracket

ASD-SFB-LSB2-BR
ASD-SFB-LSB2-WH

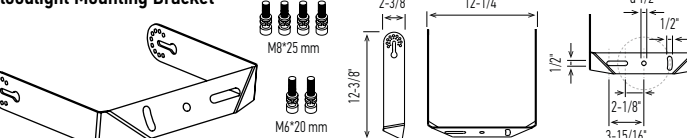


Arm Mounting Bracket for round and square poles

ASD-AMB-LSB2-BR
ASD-AMB-LSB2-WH



Floodlight Mounting Bracket

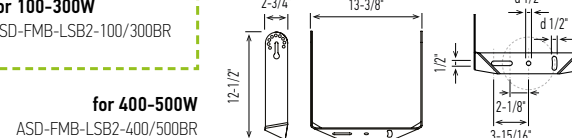


for 100-300W

ASD-FMB-LSB2-100/300BR

for 400-500W

ASD-FMB-LSB2-400/500BR



For most up-to-date spec sheets please refer to asd-lighting.com

ASD LIGHTING CORP

E-mail: orders@asd-lighting.com | Web site: www.asd-lighting.com





LED AREA LIGHT

ACCESSORIES COMPATIBLE LIST:

Accessories		Modelos															
				ASD-PC-LSB	ASD-PC-LSBHV	ASD-L2M-LSB	ASD-L4M-LSB	ASD-L5M-LSB	ASD-TRB-LSB2-BR	ASD-TRB-LSB2-VH	ASD-SFB-LSB2-BR	ASD-SFB-LSB2-VH	ASD-AMB-LSB2-BR	ASD-AMB-LSB2-VH	ASD-AMBR-LSB2-BR	ASD-FMB-LSB2-100/300BR	ASD-FMB-LSB2-400/500BR
				Photocell Kit			Clear Lens			Full Trunnion Mounting Bracket		Slip Fitter Bracket		Arm Mounting Bracket			Floodlight Mounting Bracket
ASD-LSB2	60 W	•					•	•	•	•	•	•	•	•	•	•	
	100 W	•					•	•	•	•	•	•	•	•	•	•	
	150 W	•					•	•	•	•	•	•	•	•	•	•	
	185 W	•					•	•	•	•	•	•	•	•	•	•	
	240 W	•					•	•	•	•	•	•	•	•	•	•	
	300 W	•					•	•	•	•	•	•	•	•	•	•	
	400 W	•					•	•	•	•	•	•	•	•	•		•
	500 W	•					•	•	•	•	•	•	•	•	•		•
ASD-LSB2HV	100 W		•				•	•	•	•	•	•	•	•	•	•	
	150 W		•				•	•	•	•	•	•	•	•	•	•	
	185 W		•				•	•	•	•	•	•	•	•	•	•	
	240 W		•				•	•	•	•	•	•	•	•	•	•	
	300 W		•				•	•	•	•	•	•	•	•	•	•	
	400 W		•				•	•	•	•	•	•	•	•	•		•
	500 W		•				•	•	•	•	•	•	•	•	•		•
	500 W		•				•	•	•	•	•	•	•	•	•		•

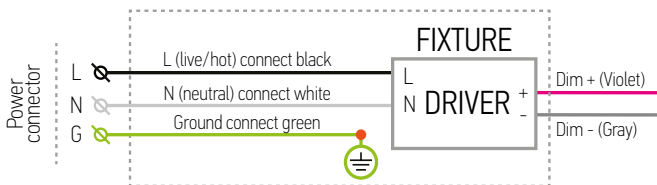
INSTALLATION GUIDE

IMPORTANT SAFETY INFORMATION:

Please read all the instructions below before installation.

- ▶ Make sure that the supply voltage corresponds to the rated product voltage.
- ▶ The product must be installed by a qualified electrician in accordance with the National Electrical Code and corresponding local codes.
- ▶ If the product is damaged, do not use it.

ELECTRICAL SCHEMATIC DIAGRAM:



⚠ WARNING

RISK OF PERSONAL INJURY – READ and follow all WARNINGS and installation instructions.

Keep or give to the owner for future reference.

Risk of cuts: Wear gloves to prevent cuts or abrasions when removing from carton, handling, installing, and maintaining this product.

Risk of electric shock: This product must be installed in accordance with the applicable installation code by a person familiar with the construction and operation of the product and the hazards involved.

Risk of Fire: Minimum 194°F supply conductors. Consult a qualified electrician to ensure correct branch circuit conductor.

ASD® assumes no responsibility for claims arising out of improper or careless installation or handling of this product.

For most up-to-date spec sheets please refer to asd-lighting.com

ASD LIGHTING CORP

E-mail: orders@asd-lighting.com | Web site: www.asd-lighting.com

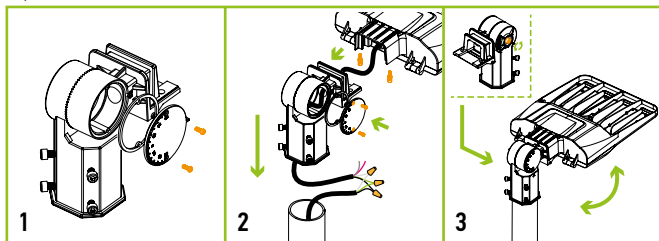




LED AREA LIGHT

SLIP FITTER BRACKET ASD-SFB-LSB2 sold separately:

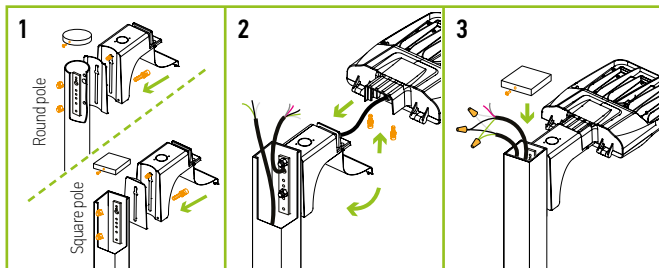
1. Remove the circular plate from the slip fitter (2 screws).
2. Thread the wire through the slip fitter into the pole. Make AC connections in accordance to wiring diagram.
3. If necessary adjust the fixture angle with the large hex bolt on the side of the slip fitter.



The wiring is inside the pole, the side is sealed with a rubber ring and fixed with screws, preventing water from getting inside the fixture.

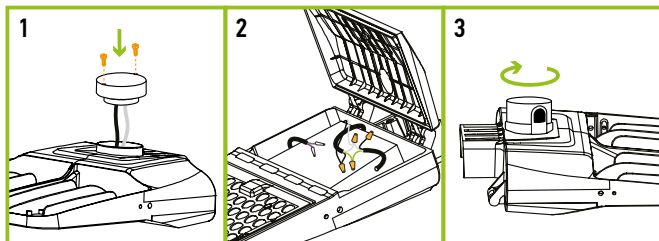
ARM MOUNTING BRACKET ASD-AMB-LSB2 sold separately:

1. Open up the door on the arm bracket (1 screw). Install the mounting arm onto the pole (2 bolts). Make sure the silicone gaskets form a tight seal. Choose gasket depending on form of the pole (round or flat).
2. Thread the cord from the fixture through the bracket into the pole and tighten the two M8 screws on the body of the light.
3. Pass the AC wire through the base and tighten the two screws on the body of the fixture.



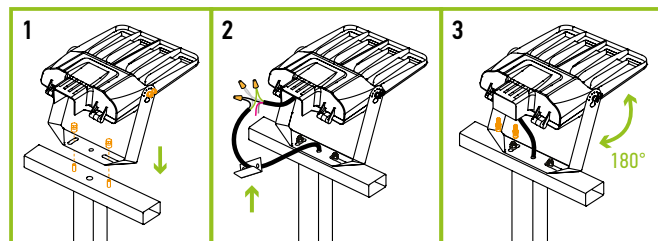
PHOTOCELL ASD-PC-LSB/ ASD-PC-LSBV sold separately:

1. Power off before installation. Use a screwdriver to take off the circular plate (2 screws). Screw the photocell base on the top of the fixture, pull the wires through the driver box.
2. Use a screwdriver to open the driver box (2 screws). Connect the wires Black to Black, White to White and Red to Load.
3. Firmly place the photocell into the receptacle base and twist it clockwise until it locks into place.



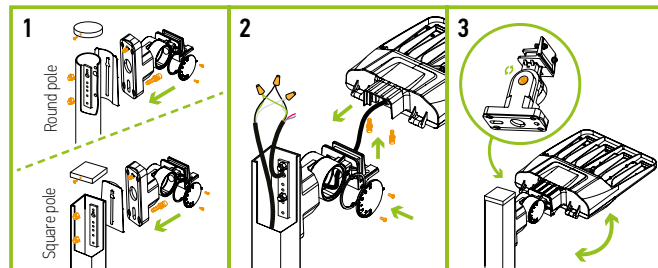
FLOODLIGHT MOUNTING BRACKET ASD-FMB-LSB2 sold separately:

1. Drill holes on the mounting surface corresponding to the holes in the arm. Attach fixture to bracket with 2 screws and bracket to surface with 2 screws.
2. Wire in accordance to the wiring schematic.
3. Seal the connections with the back plate of the fixture. Adjust fixture angle as needed.



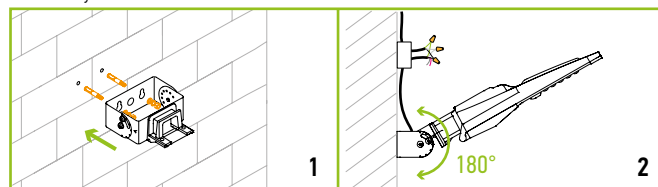
ARM MOUNTING BRACKET with angle adjustment ASD-AMBR-LSB2 sold separately:

1. Open up the door on the arm bracket (1 screw). Install the mounting arm onto the pole (2 bolts). Make sure the silicone gaskets form a tight seal. Choose gasket depending on form of the pole (round or flat).
2. Thread the cord from the fixture through the bracket into the pole and tighten the two M8 screws on the body of the light.
3. Pass the AC wire through the base and tighten the two screws on the body of the fixture. If necessary adjust the fixture angle with the large hex bolt on the side of the bracket.



FULL TRUNNION MOUNTING BRACKET ASD-TRB-LSB2 sold separately:

1. Drill holes on the mounting surface, size corresponding to the holes on the arm. Fix the bracket on the wall with screws. Pull wires through mount, secure fixture to the bracket.
2. Wire the AC power into the water tight junction box as shown in the wiring schematic diagram. Adjust the screw position to get desired angle when necessary.



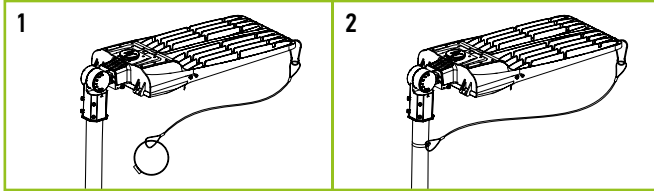
For most up-to-date spec sheets please refer to asd-lighting.com



LED AREA LIGHT

SAFETY CABLE:

1. Attach one end of the included safety cable through the hole between the fins on the luminaire.
2. Ensure the safety cable is secured on the fixture. Secure the other end of the safety cable to the mounting structure/pole.



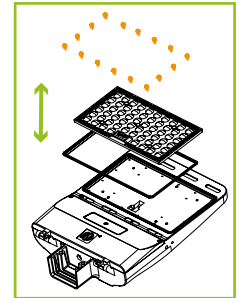
Safety cable for 400W/500W models only

LENS ASD-L2M-LSB/ ASD-L4M-LSB/ ASD-L5M-LSB

sold separately:

1. Unscrew the 16 screws of the original lens (T3-M) on the housing.
2. Install the rubber ring on new lens (T4/T5-M, sold separately).
3. Place the lens on the housing and make sure it fits the LEDs correctly.
4. Tighten the 16 screws back.

Lens	
60W, 100W, 150W, 185W	1 lens
240W, 300W	2 lens
400W, 500W	3 lens



ORDERING INFORMATION

LED AREA LIGHT:

Model	Finish	Bracket	Pcs. per Carton	Carton Size	Carton Weight	UPC
ASD-LSB2-60D50B-PRM	Bronze	-	1	19.1" x 13.4" x 6.1"	9.9 lb	819201026920
ASD-LSB2-60D50W-PRM	White	-	1	19.1" x 13.4" x 6.1"	9.9 lb	810050732710
ASD-LSB2-100D30B-PRM	Bronze	-	1	19.1" x 13.4" x 6.1"	10.2 lb	810050730181
ASD-LSB2-100D40B-PRM	Bronze	-	1	19.1" x 13.4" x 6.1"	10.2 lb	810050733342
ASD-LSB2-100D50B-PRM	Bronze	-	1	19.1" x 13.4" x 6.1"	10.2 lb	819201026449
ASD-LSB2-100D50B-SF	Bronze	Slip Fitter	1	25.9" x 15.4" x 6.1"	13.5 lb	810050735568
ASD-LSB2-100D50B-AR	Bronze	Arm	1	25.9" x 15.4" x 6.1"	12 lb	810050735612
ASD-LSB2-150D30B-PRM	Bronze	-	1	19.1" x 13.4" x 6.1"	10.3 lb	810050730198
ASD-LSB2-150D40B-PRM	Bronze	-	1	19.1" x 13.4" x 6.1"	10.3 lb	810050733359
ASD-LSB2-150D50B-PRM	Bronze	-	1	19.1" x 13.4" x 6.1"	10.3 lb	819201026456
ASD-LSB2-150D50W-PRM	White	-	1	19.1" x 13.4" x 6.1"	10.3 lb	810050732727
ASD-LSB2-150D50B-SF	Bronze	Slip Fitter	1	25.9" x 15.4" x 6.1"	13.6 lb	810050735575
ASD-LSB2-150D50B-AR	Bronze	Arm	1	25.9" x 15.4" x 6.1"	12.1 lb	810050735629
ASD-LSB2-185D30B-PRM	Bronze	-	1	19.1" x 13.4" x 6.1"	10.3 lb	810050730204
ASD-LSB2-185D50B-PRM	Bronze	-	1	19.1" x 13.4" x 6.1"	10.3 lb	819201026463
ASD-LSB2-185D50W-PRM	White	-	1	19.1" x 13.4" x 6.1"	10.3 lb	810050732734
ASD-LSB2-185D50B-SF	Bronze	Slip Fitter	1	25.9" x 15.4" x 6.1"	13.6 lb	810050735582
ASD-LSB2-185D50B-AR	Bronze	Arm	1	25.9" x 15.4" x 6.1"	12.1 lb	810050735636
ASD-LSB2-240D50B-PRM	Bronze	-	1	25.7" x 13.4" x 6.1"	18.1 lb	819201026470
ASD-LSB2-300D30B-PRM	Bronze	-	1	25.7" x 13.4" x 6.1"	18.1 lb	810050730211
ASD-LSB2-300D40B-PRM	Bronze	-	1	25.7" x 13.4" x 6.1"	18.1 lb	810050733366
ASD-LSB2-300D50B-PRM	Bronze	-	1	25.7" x 13.4" x 6.1"	18.1 lb	819201026487
ASD-LSB2-300D50W-PRM	White	-	1	25.7" x 13.4" x 6.1"	18.1 lb	810050732741
ASD-LSB2-300D50B-SF	Bronze	Slip Fitter	1	32.4" x 15.4" x 6.1"	21.5 lb	810050735605
ASD-LSB2-300D50B-AR	Bronze	Arm	1	32.4" x 15.4" x 6.1"	19.9 lb	810050735650
ASD-LSB2-400D40B-PRM	Bronze	-	1	32.3" x 15" x 7.1"	26.2 lb	810050735391
ASD-LSB2-400D50B-PRM	Bronze	-	1	32.3" x 15" x 7.1"	26.2 lb	819201026494
ASD-LSB2-500D50B-PRM	Bronze	-	1	33.9" x 17" x 8.5"	25.6 lb	819201026517
ASD-LSB2-500D50W-PRM	White	-	1	33.9" x 17" x 8.5"	25.6 lb	810050732758
ASD-LSB2HV-100D50B-PRM	Bronze	-	1	19.1" x 13.4" x 6.1"	10.7 lb	810050730358
ASD-LSB2HV-150D50B-PRM	Bronze	-	1	19.1" x 13.4" x 6.1"	10.3 lb	819201027392
ASD-LSB2HV-150D50W-PRM	White	-	1	19.1" x 13.4" x 6.1"	10.3 lb	810050732765
ASD-LSB2HV-185D50B-PRM	Bronze	-	1	19.1" x 13.4" x 6.1"	10.3 lb	819201027408
ASD-LSB2HV-185D50W-PRM	White	-	1	19.1" x 13.4" x 6.1"	10.3 lb	810050732772
ASD-LSB2HV-240D50B-PRM	Bronze	-	1	25.7" x 13.4" x 6.1"	17 lb	810050730228
ASD-LSB2HV-300D50B-PRM	Bronze	-	1	25.7" x 13.4" x 6.1"	18.1 lb	819201026821
ASD-LSB2HV-300D50W-PRM	White	-	1	25.7" x 13.4" x 6.1"	18.1 lb	810050732789
ASD-LSB2HV-400D50B-PRM	Bronze	-	1	32.3" x 15" x 7.1"	26.7 lb	819201026838
ASD-LSB2HV-500D50B-PRM	Bronze	-	1	32.3" x 15" x 7.1"	26.7 lb	819201026845

For most up-to-date spec sheets please refer to asd-lighting.com

ASD LIGHTING CORP

E-mail: orders@asd-lighting.com | Web site: www.asd-lighting.com





LED AREA LIGHT

ACCESSORIES:

Model	Name	Finish	Materials	Weight	Dimensions
ASD-SFB-LSB2-BR	Slip fitter Mounting Bracket	Bronze	Die-Cast Aluminum	3.4 lb	10 11/16" x 4" x 3 3/8"
ASD-SFB-LSB2-WH	Slip fitter Mounting Bracket	White	Die-Cast Aluminum	3.4 lb	10 11/16" x 4" x 3 3/8"
ASD-AMB-LSB2-BR	Arm Mounting Bracket	Bronze	Die-Cast Aluminum	1.8 lb	8 1/2" x 3 3/4" x 4 3/4"
ASD-AMB-LSB2-WH	Arm Mounting Bracket	White	Die-Cast Aluminum	1.8 lb	8 1/2" x 3 3/4" x 4 3/4"
ASD-AMBR-LSB2-BR	Arm Mounting Bracket with angle adjustment	Bronze	Die-Cast Aluminum	2.9 lb	9" x 6 1/4" x 3 15/16"
ASD-TRB-LSB2-BR	Full Trunnion Mounting Bracket	Bronze	Steel	3.1 lb	7 1/16" x 5 7/8" x 2 3/8"
ASD-TRB-LSB2-WH	Full Trunnion Mounting Bracket	White	Steel	3.1 lb	7 1/16" x 5 7/8" x 2 3/8"
ASD-FMB-LSB2-100/300BR	Floodlight Mounting Bracket for 100-300W	Bronze	SPCC	2.6 lb	14 1/4" x 12 1/16" x 2 3/8"
ASD-FMB-LSB2-400/500BR	Floodlight Mounting Bracket for 400-500W	Bronze	SPCC	4.3 lb	13 7/8" x 13 3/8" x 2 3/4"
ASD-PC-LSB	Photocell & Base Kit for	Blue	PC	0.5 lb	3 1/4" x 3 1/4" x 3 7/16"
ASD-PC-LSBHV	Photocell & Base Kit for High Voltage	Blue	PC	0.4 lb	3 3/8" x 3 3/8" x 2 5/8"
ASD-L2M-LSB	Clear Lens Type II-M	Clear	PC	0.4 lb	11" x 5 7/8" x 1/2"
ASD-L4M-LSB	Clear Lens Type IV-M	Clear	PC	0.5 lb	11" x 5 7/8" x 1/2"
ASD-L5M-LSB	Clear Lens Type V-M	Clear	PC	0.5 lb	11" x 6" x 1/4"
Model	UPC	Pcs. per Carton	Carton Size	Carton Weight	GTIN 14
ASD-SFB-LSB2-BR	819201026524	10	18.4" x 9.3" x 11.8"	35.1 lb	10819201026521
ASD-SFB-LSB2-WH	810050732796	10	18.4" x 9.3" x 11.8"	35.1 lb	10810050732793
ASD-AMB-LSB2-BR	819201026548	10	21.4" x 10.8" x 9.8"	20.3 lb	10819201026545
ASD-AMB-LSB2-WH	810050732802	10	21.4" x 10.8" x 9.8"	20.3 lb	10810050732809
ASD-AMBR-LSB2-BR	810050735247	10	21.4" x 9.6" x 13.4"	30.9 lb	10810050735244
ASD-TRB-LSB2-BR	819201026555	10	14.5" x 14" x 8.2"	31.7 lb	10819201026552
ASD-TRB-LSB2-WH	810050732819	10	14.5" x 14" x 8.2"	31.7 lb	10810050732816
ASD-FMB-LSB2-100/300BR	819201026579	10	28.9" x 15.4" x 13.1"	28 lb	10819201026576
ASD-FMB-LSB2-400/500BR	819201026586	5	15.4" x 14.8" x 14.2"	24.3 lb	10819201026583
ASD-PC-LSB	819201023622	100	17.4" x 17.4" x 19.8"	52.9 lb	10819201023629
ASD-PC-LSBHV	819201023646	24	23.2" x 15.7" x 6.3"	13.1 lb	10819201023643
ASD-L2M-LSB	810050731508	50	20.6" x 11.5" x 6.7"	22.5 lb	10810050731505
ASD-L4M-LSB	819201023844	50	20.6" x 11.5" x 6.7"	26.9 lb	10819201023841
ASD-L5M-LSB	819201023851	50	23.2" x 15.7" x 6.3"	28.7 lb	10819201023858

For most up-to-date spec sheets please refer to asd-lighting.com

ASD LIGHTING CORP

E-mail: orders@asd-lighting.com | Web site: www.asd-lighting.com

