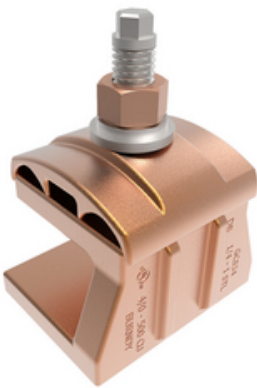




GCS34HEX, CONSTRICTOR

Mechanical Ground Connector to Steel

By Burndy
Catalog # [GCS34HEX](#)



Mechanical Ground Connector to Steel; 4/0-500 kcmil Copper; 1/4"-1" Steel. The Type GCS-HEX series of connectors are used to ground cable to steel, I-beam, or other flanged surfaces, in applications where drilling is either not possible or unwanted. Installation of the GCS-HEX type connectors requires no power tools and is suitable for applications where a removable connection is desired. The CONSTRICTOR® GCS-HEX series of grounding connectors are UL Listed for Grounding and Bonding and Direct Burial Rated for installation in earth and concrete.

Features

- Easy and simple hex tooling installation
- No hot work permit or drilling required
- Versatile, allows parallel or perpendicular conductor orientation
- Accepts beam thickness .125 - 1.000" (1/8 to 1")
- Conductor range from #6 AWG to 500 kcmil
- UL467 Listed
- Rated for Direct Burial in earth or concrete

Application

Structural Steel Grounding, I-beam, Lattice Tower Grounding

General

Catalog Number	GCS34HEX
Material	Cast copper alloy
Material - Hardware	Stainless Steel
UPC	621945544086

Dimensions

Dimensions	3.00 in x 2.25 in x 4.00 in
Height	4 in
Length	3 in
Width	2.25 in

Conductor Related

Conductor Range	250-500 Kcmil
-----------------	---------------

Product Assets

[Catalogs - BURNDY Master Catalog - Full Line BURNDY Catalog](#)
[Catalogs - BURNDY Master Catalog - Section E2 - Mechanical Grounding](#)
[Interactive Catalog - BURNDY Full-Line Digital Catalog](#)
[Sales Drawings - 50097517](#)
[Specifications - GCS34HEX](#)