

# E5SQLFU11

5" Line Voltage Shallow New Construction  
Housing for 1100lm LED Square Engines

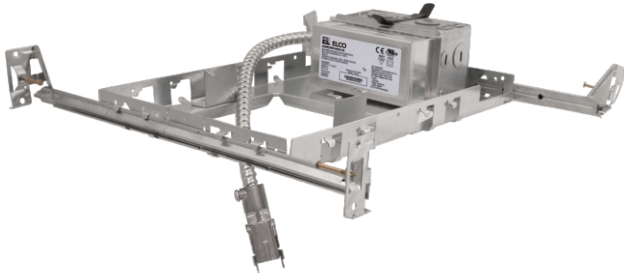
## PROJECT INFORMATION:

Project Name: \_\_\_\_\_

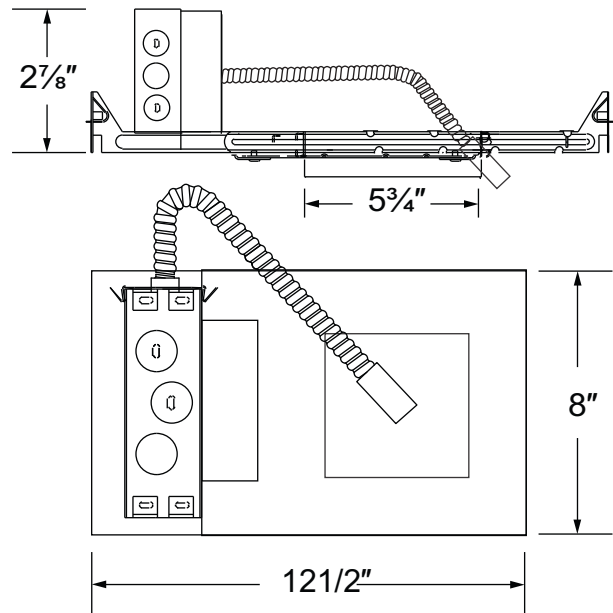
Fixture Type: \_\_\_\_\_

Date: \_\_\_\_\_

## DIMENSIONS



(Optional Emergency Battery Backup)



## PRODUCT SPECIFICATIONS

- IC airtight construction for use in insulated ceilings with ELCO 5" 1100lm square inserts.
- High efficiency driver, mounted on J-box for cooler LED operation and easy access from below the ceiling.
- CA Title 24 compliant.
- Optional emergency battery backup available  
E5SQLFU11EM1 - 750 lm  
E5SQLFU11EM2 - 1100 lm
- Light Engines sold separately.

**Input:** 16W, 120-277V

**Dimmable:** TRIAC/ELV (at 120V only)

**Connection:** 2-wire quick connect terminal connector.

**Labels:** U.L. listed for damp location

Suitable for wet location, covered ceiling with applicable trims only.

### Compatible Inserts:

E520L1130, E520L1140  
E523L1130, E523L1140  
E524L1130, E524L1140

## INSTALLATION

**Junction Box:** Pre-wired junction box provided with 1/2" and 3/4" knockouts. Maximum (6) No. 12 AWG branch circuit conductors (3 in, 3 out). Junction box provided with removable access plates.

**Mounting:** Captive bar hangers span 24" and can be repositioned 90°. Housing accommodates various ceiling thickness.

**Mounting Frame:** Stamped galvanized steel construction for corrosion resistance

## CATALOG NUMBER

**Example:** E5SQLFU11