



Color: White

Weight: 8.2 lbs

Project:

Type:

Prepared By:

Date:

**Driver Info**

Type	Constant Current
120V	0.25A
208V	0.15A
240V	0.13A
277V	0.12A
Input Watts	25.7-41.5W

**LED Info**

Watts	30W
Color Temp	Field Adjustable
Color Accuracy	79-81 CRI
L70 Lifespan	75,000 Hours
Lumens	3117-4802
Efficacy	106.6-127.5 lm/W

**Technical Specifications****Field Adjustability****Field Adjustable:**

Field Adjustable Light Output:  
2' x 2': 25W/30W/40W (factory default 30W)  
Color temperature (selectable by 3500K, 4000K and 5000K)

**Compliance****UL Listed:**

Suitable for damp locations

**IESNA LM-79 & IESNA LM-80 Testing:**

RAB LED luminaires and LED components have been tested by an independent laboratory in accordance with IESNA LM-79 and LM-80.

**DLC Listed:**

This product is on the Design Lights Consortium (DLC) Qualified Products List and is eligible for rebates from DLC Member Utilities.  
DLC Product Code: PB45PSA0

**Performance****Lifespan:**

75,000-Hour LED lifespan based on IES LM-80 results and TM-21 calculations

**LED Characteristics****LEDs:**

Long-life, high-efficacy, surface-mount LEDs

**Construction****Operating Temperature:**

-30°C (-22°F) to 40°C (104°F)

**Lens:**

Frosted polystyrene

**Mounting:**

Recessed ceiling

**IC Rated:**

Suitable for insulated ceilings

**Housing:**

Lightweight aluminum housing

**Finish:**

Formulated for high durability and long-lasting color

**Green Technology:**

Mercury and UV free. RoHS-compliant components.

**Other****Warranty:**

RAB warrants that our LED products will be free from defects in materials and workmanship for a period of five (5) years from the date of delivery to the end user, including coverage of light output, color stability, driver performance and fixture finish. RAB's warranty is subject to all terms and conditions found at [rablighting.com/warranty](http://rablighting.com/warranty).

## Technical Specifications (continued)

## Other

## Trade Agreements Act Compliant:

This product is a product of Cambodia and a "designated country" end product that complies with the Trade Agreements Act

## Buy American Act Compliance:

RAB values USA manufacturing! Upon request, RAB may be able to manufacture this product to be compliant with the Buy American Act (BAA). Please contact customer service to request a quote for the product to be made BAA compliant.

## Electrical

## Driver:

Constant Current, Class 2, 120-277V, 50/60 Hz, 120V: 0.25A, 208V: 0.15A, 240V: 0.13A, 277V: 0.12A

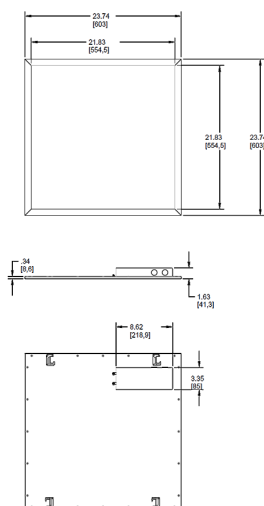
## THD:

5.8% at 120V, 11.03% at 277V

## Power Factor:

99.4% at 120V, 92.3% at 277V

## Dimensions



## Features

- Field-adjustable light output (3 discrete steps)
- White tunable (3 discrete color temperatures)
- Can be changed before, during or after installation
- 75,000-Hour LED lifespan

## Ordering Matrix

Family	Size	Voltage	Options
EZPANFA	2X2	/D10	
	1X4 = 1' x 4'	/D10 = 0-10V Dimming	Blank = No Option
	2X2 = 2' x 2'		/LC = Lightcloud® Controller
	2X4 = 2' x 4'		/LCS = Lightcloud® Sensor
			/E2 = Battery Backup