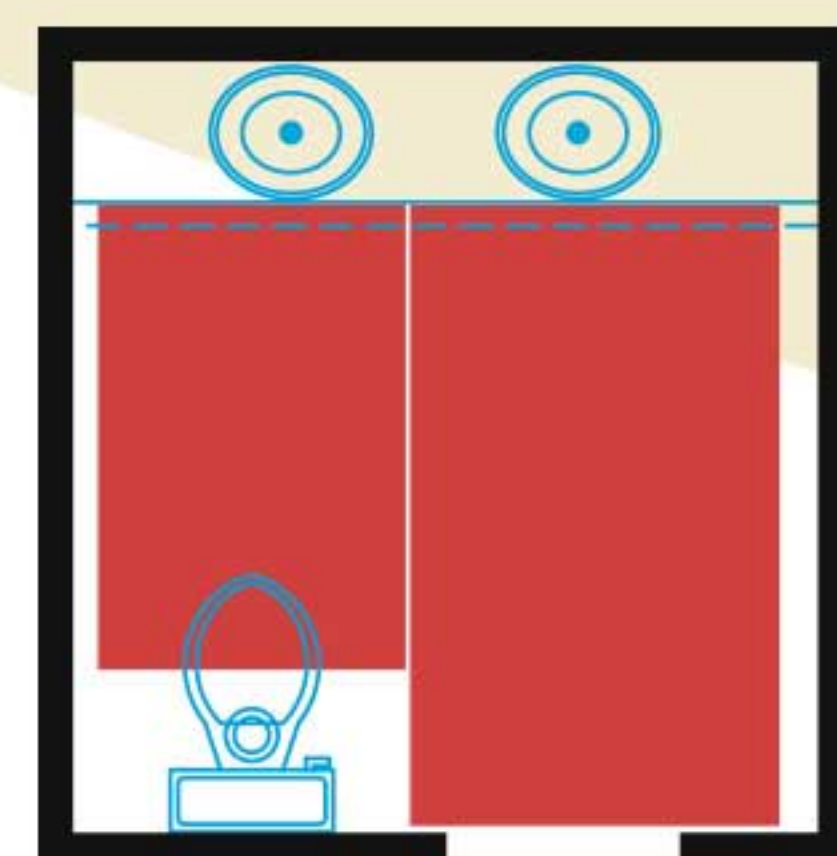




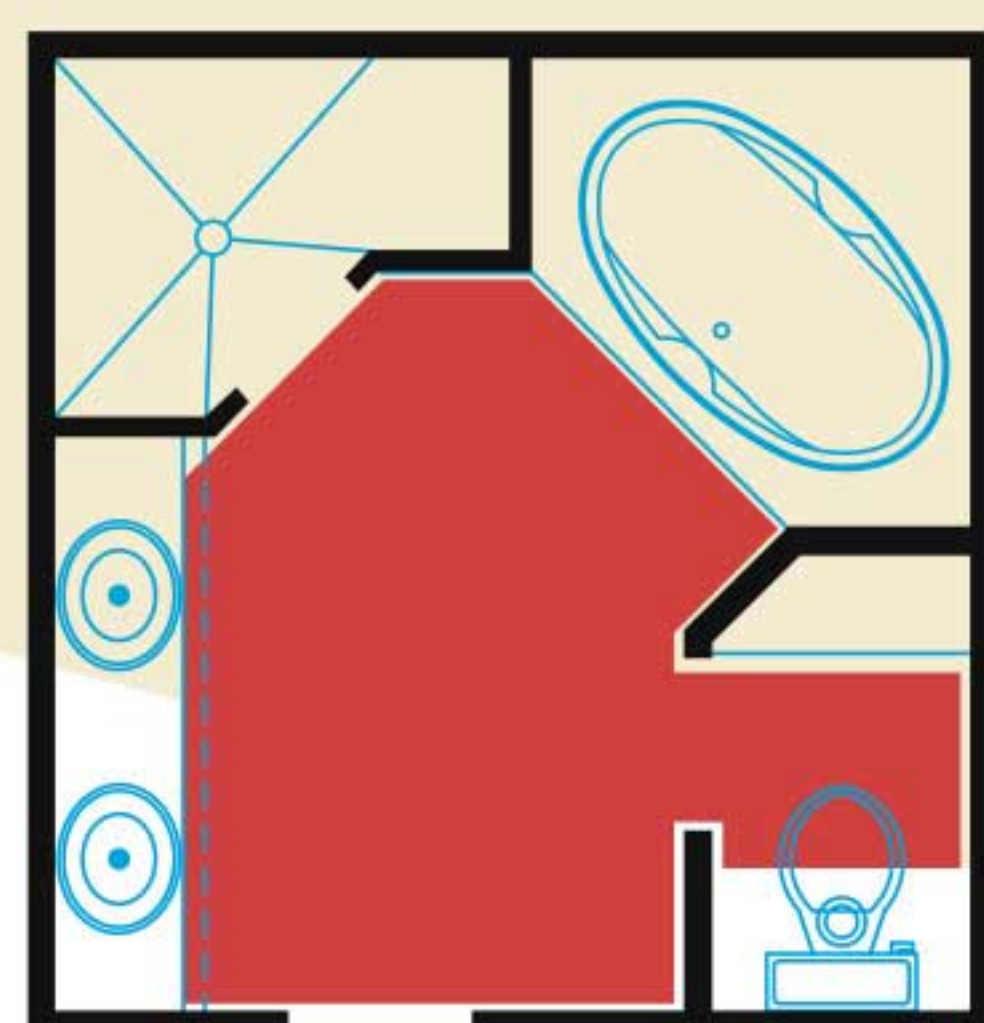
Throw away your slippers and enjoy the soothing comfort of heated tile, stone, laminate, or engineered wood floors in any room in your home.

## Comfort, it's that simple

Pre-built like an electric blanket, Nuheat is an electrical radiant floor warming system. Thin heating wires are embedded in durable material; those mats are then laid under the flooring surface. The choice of professionals, Nuheat is simple to install and radiates even heat, with no cold spots. Available in both 110V and 220V formats, there are over 60 standard mat sizes that fit most room applications. For spaces with curves, angles, we offer custom size mats. Our mat system is only 1/8" thick, making it ideal for both remodeling and new construction projects.



Standard mat layout



Custom mat layout

Nuheat mats are only 1/8<sup>th</sup>" thick and will not significantly raise the existing floor height.

## Installing the Nuheat mat system

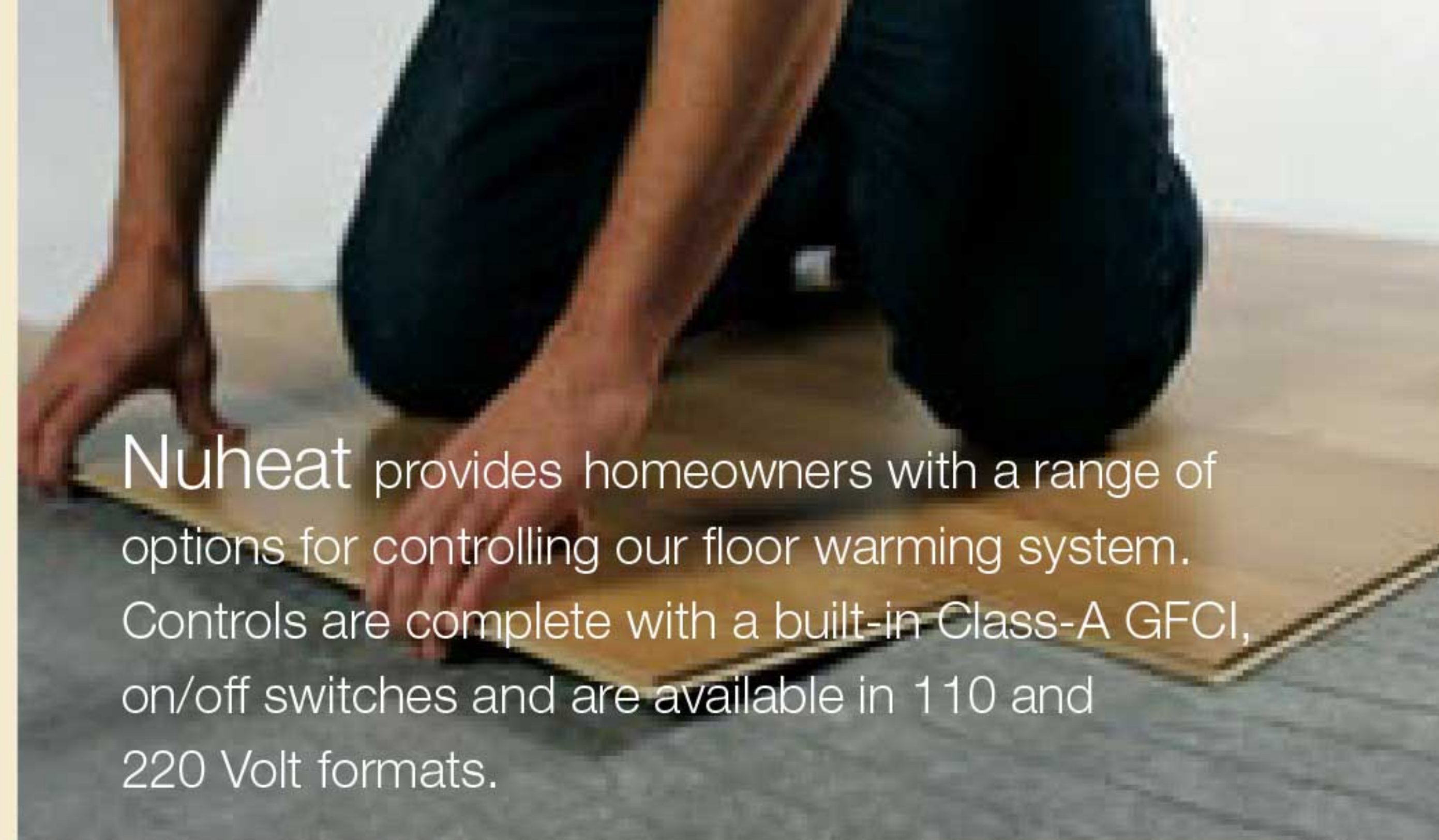
Nuheat is the easiest floor warming system to install. Hassle-free, it doesn't require complicated calculations and there are no loose wires to worry about. Your Nuheat authorized distributor can recommend installers in your local area. Contractors that have never worked with Nuheat can call our customer service desk before installing to ask questions and gain helpful tips: 1 (800) 778-WARM (9276).

## Tile and stone

A professional tile setter uses thinset to adhere the Nuheat system to the sub floor. The tile or stone is then laid over top of the mat in a second layer of thinset. A certified electrician connects the system to your household wiring. We offer an industry-leading 25 year warranty for our mats under tile and stone surfaces.

## Laminate and engineered wood

Simply install Nuheat as for Tile & Stone using thinset to adhere the Nuheat mat to the sub floor. Once the Nuheat mat is in place the next step is to completely cover the mat with a layer of mortar using the flat side of the trowel & applying a Min 1/4" layer over the mat & leads. Once mortar is cured, install the laminate or engineered wood according to installation instructions. Mortar must cover the mat.



Nuheat provides homeowners with a range of options for controlling our floor warming system. Controls are complete with a built-in Class-A GFCI, on/off switches and are available in 110 and 220 Volt formats.

## MatComfort thermostat

- Floor sensing thermostat for tile and stone floors
- Has both pre-programmed settings as well as programmable 7 day settings
- Back lit display
- ENERGY STAR qualified
- Class-A GFCI



## MatComfort 82F thermostat

- Floor sensing thermostat for laminate and engineered wood surfaces
- Has both pre-programmed settings as well as programmable 7 day settings
- Back lit display
- ENERGY STAR qualified
- Class-A GFCI



## MatComfort regulator

- The alternative to precision control and programmable features
- Heating indicator light
- Power selection dial
- Class-A GFCI



## Nuheat advantages

Nuheat offers affordable luxury and barefoot comfort that any homeowner can enjoy. The comfort of warm floors paired with a simple installation procedure makes Nuheat the leader in floor warming systems.

A direct manufacturer's sales force, a technical services department, and a full time design team are part of Nuheat's superior customer service.

## Operating costs

Warm floors are an affordable luxury when you use our efficient mat system. A 30 square foot heated area of Nuheat will only use the same amount of electricity as three 100 watt light bulbs. Nuheat is ENERGY STAR qualified, when used with our MatComfort programmable thermostats.

## Safety

Both the Underwriter's Laboratory (UL) and the Canadian Standards Association (CSA) have tested and approved the Nuheat system for North American homes. Electrical code dictates that Nuheat must be installed with a Ground Fault Circuit Interrupter (GFCI).

## Purchasing Nuheat

Warm Your Floor is an authorized Nuheat distributor. We stock all sizes of Nuheat mats - over 100 in all and are trained and experienced to assist you before, during and after installation.

You can find helpful information, instructions and even place your order on our website. [www.WarmYourFloor.com](http://www.WarmYourFloor.com)  
Call, email or fax toll-free.

## Important guidelines

- Nuheat produces 12 watts per square foot at full power, producing a floor temperature of 80°-90°F (27°-32°C) depending on type of application and heat loss.
- Nuheat must be placed wherever warmth is desired- only flooring placed directly over top of the mat will be heated.
- Nuheat is designed for ceramic tile, natural stone (marble, slate, granite), laminate and engineered wood surfaces.





More questions? Visit us online at  
[www.WarmYourFloor.com](http://www.WarmYourFloor.com)

Warm Your Floor  
Floor Warming Systems  
toll free 1 (866) 558-3369  
fax 1 (949) 855-2010

[www.WarmYourFloor.com](http://www.WarmYourFloor.com)  
[scott@WarmYourFloor.com](mailto:scott@WarmYourFloor.com)



456 Merrick Road,  
Lynbrook, New York 11563  
Phone: (516) 593-7200  
Fax: (516) 593-7249  
Email: [mail@michaelselectric.com](mailto:mail@michaelselectric.com)

Nuheat™ is the registered Trademark of Nuheat Industries Limited.

#### Nuheat Standard Mat Sizes (110V)

Model Number	Dimensions (inches)	Ohms	Amps	Watts
F1006	40 x 27	134	0.8	90
F1008	40 x 32	113	1	107
F1010	40 x 40	91	1.2	133
F1012	40 x 48	76	1.5	160
F1208	48 x 30	101	1.1	120
F1209	48 x 36	84	1.3	144
F1506	60 x 24	101	1.1	120
F1508	60 x 30	81	1.4	150
F1509	60 x 36	67	1.6	180
F1510	60 x 42	58	1.9	210
F1512	60 x 48	50	2.2	240
F1515	60 x 60	40	2.7	300
F1806	72 x 24	84	1.3	144
F1808	72 x 30	67	1.6	180
F1809	72 x 36	56	2	216
F1810	72 x 42	48	2.3	252
F1812	72 x 48	42	2.6	288
F1815	72 x 60	34	3.3	360
F1818	72 x 72	28	3.9	432
F2006	80 x 24	76	1.5	160
F2008	80 x 30	61	1.8	200
F2009	80 x 36	50	2.2	240
F2010	80 x 42	43	2.5	280
F2012	80 x 48	38	2.9	320
F2015	80 x 60	30	3.6	400
F2020	80 x 80	23	4.8	533
F2106	84 x 24	72	1.5	168
F2108	84 x 30	58	1.9	210
F2109	84 x 36	48	2.3	252
F2110	84 x 42	41	2.7	294
F2112	84 x 48	36	3.1	336
F2115	84 x 60	29	3.8	420
F2118	84 x 72	24	4.6	504
F2121	84 x 84	21	5.3	588
F2506	96 x 24	63	1.7	192
F2508	96 x 30	50	2.2	240
F2509	96 x 36	42	2.6	288
F2510	96 x 42	36	3.1	336
F2512	96 x 48	32	3.5	384
F2515	96 x 60	25	4.4	480
F2518	96 x 72	21	5.2	576
F2521	96 x 84	18	6.1	672
F2525	96 x 96	16	7	768
F2706	108 x 24	56	2	216
F2708	108 x 30	45	2.5	270
F2709	108 x 36	37	2.9	324
F2710	108 x 42	32	3.4	378
F2712	108 x 48	28	3.9	432
F2715	108 x 60	22	4.9	540
F2718	108 x 72	19	5.9	648
F2721	108 x 84	16	6.9	756
F2725	108 x 96	14	7.9	864
F2727	108 x 108	12	8.8	972
F3006	118 x 24	51	2.1	236
F3008	118 x 30	41	2.7	295
F3009	118 x 36	34	3.2	354
F3010	118 x 42	29	3.8	413
F3012	118 x 48	26	4.3	472
F3015	118 x 60	20	5.4	590
F3018	118 x 72	17	6.4	708
F3021	118 x 84	15	7.5	826
F3025	118 x 96	13	8.6	944
F3027	118 x 108	11	9.7	1062
F3030	118 x 116	11	10.4	1141

#### Nuheat Standard Mat Sizes (220V)

Model Number	Dimensions (inches)	Ohms	Amps	Watts
G1509	60 x 36	269	0.8	180
G1510	60 x 42	230	1	210
G1512	60 x 48	202	1.1	240
G1515	60 x 60	161	1.4	300
G1808	72 x 30	269	0.8	180
G1809	72 x 36	224	1	216
G1810	72 x 42	192	1.1	252
G1812	72 x 48	168	1.3	288
G1815	72 x 60	134	1.6	360
G1818	72 x 72	112	2	432
G2008	80 x 30	242	0.9	200
G2009	80 x 36	202	1.1	240
G2010	80 x 42	173	1.3	280
G2012	80 x 48	151	1.5	320
G2015	80 x 60	121	1.8	400
G2020	80 x 80	91	2.4	533
G2106	84 x 24	288	0.8	168
G2108	84 x 30	230	1	210
G2109	84 x 36	192	1.1	252
G2110	84 x 42	165	1.3	294
G2112	84 x 48	144	1.5	336
G2115	84 x 60	115	1.9	420
G2118	84 x 72	96	2.3	504
G2121	84 x 84	82	2.7	588
G2506	96 x 24	252	0.9	192
G2508	96 x 30	202	1.1	240
G2509	96 x 36	168	1.3	288
G2510	96 x 42	144	1.5	336
G2512	96 x 48	126	1.7	384
G2515	96 x 60	101	2.2	480
G2518	96 x 72	84	2.6	576
G2521	96 x 84	72	3.1	672
G2525	96 x 96	63	3.5	768
G2706	108 x 24	224	1	216
G2708	108 x 30	179	1.2	270
G2709	108 x 36	149	1.5	324
G2710	108 x 42	128	1.7	378
G2712	108 x 48	112	2	432
G2715	108 x 60	90	2.5	540
G2718	108 x 72	75	2.9	648
G2721	108 x 84	64	3.4	756
G2725	108 x 96	56	3.9	864
G2727	108 x 108	50	4.4	972
G3006	118 x 24	205	1.1	236
G3008	118 x 30	164	1.3	295
G3009	118 x 36	137	1.6	354
G3010	118 x 42	117	1.9	413
G3012	118 x 48	103	2.1	472
G3015	118 x 60	82	2.7	590
G3018	118 x 72	68	3.2	708
G3021	118 x 84	59	3.8	826
G3025	118 x 96	51	4.3	944
G3027	118 x 108	46	4.8	1062
G3030	118 x 116	42	5.2	1141

Mat dimensions listed in inches.

Information subject to change at any time. For a complete list of up to date specifications please visit [www.nuheat.com](http://www.nuheat.com).



Floor Warming System

