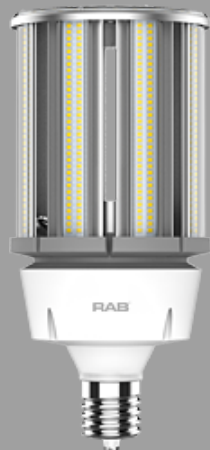


Project:

Type:

Prepared By:

Date:



UPC: 019813833040



Features and Benefits

HID REPLACEMENT - Replace conventional HID lamps

BALLAST BYPASS - Internal driver eliminates the need for external driver or ballast

COMPACT DESIGN - Allows the lamp to fit in most fixtures

HEAT DISSIPATION - Thermal technology extends lifespan

WATER AND DUST RESISTANT - Ideal for rugged applications. IP65 Rated.

ENCLOSED FIXTURE RATED - May be used in enclosed and open fixtures

INSTANT ON - No warmup time required, full brightness instantly

SURGE PROTECTION - Includes 4kV surge protection

Technical Specifications

Performance

Product Type:

HID

Input Wattage:

120W

Typical Lumen Output:

18000

Efficacy:

150 lm/W

Color Temperature:

5000K Daylight

CRI:

80

L70 Lifespan:

50,000 Hours

Dimmable:

No

Construction

Bulb Shape:

Post Top

Base Type:

EX39

Beam Angle:

360°

Other

Equivalency:

600W HID

Warranty (Years):

RAB warrants that our LED products will be free from defects in materials and workmanship for a period of five (5) years from the date of delivery to the end user, including coverage of light output, color stability, driver performance and fixture finish. RAB's warranty is subject to all terms and conditions found at rablighting.com/warranty.

Electrical

Power Factor:

>0.9

Operating Temperature:

-30°C - 60°C

Input Voltage:

100-277V

Technical Specifications (continued)

Electrical

Operating Frequency:

50 / 60 Hz

Installation

Installation Type:

Type B, Ballast Bypass

Installation Orientation:

For Vertical Installation Only

Technical Specifications

For Use in Emergency Fixtures:

No

For Use Outdoors in Open Fixtures:

No

Electrical Characteristics

Input Current @ 120V:

1mA

Flicker:

<30%

THDi:

<20%

Compliance

UL Listed:

Yes

UL Classified:

Yes

DLC Listed:

This product is on the Design Lights Consortium (DLC) Qualified Products List and is eligible for rebates from DLC Member Utilities.

DLC Model Number:

H10018

DLC Product Code:

PLU4ULZ0J905

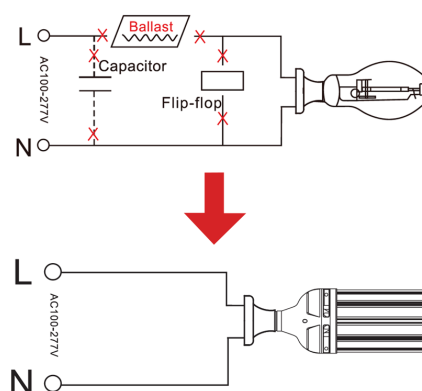
CEC Status:

Lawful for sale in California

Case and Pallet Dimensions

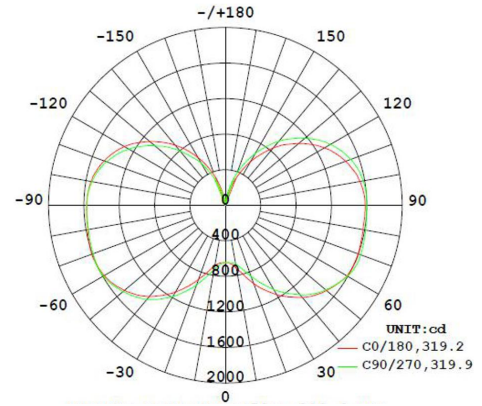
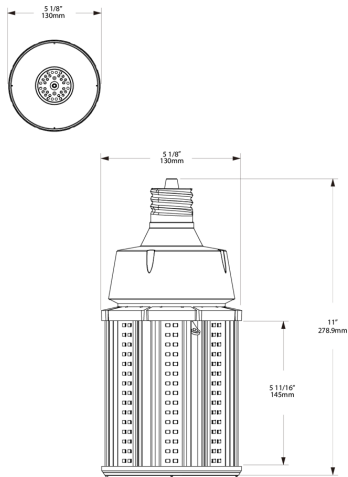
	QTY	LENGTH (in)	WIDTH (in)	HEIGHT (in)
CASE	6	17.3	13.6	11.8
PALLET	108	40.2	35.4	39.4

Wiring Diagram

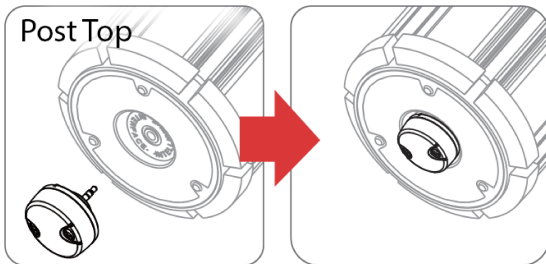


Dimension

Light Distribution



Sensor Installation



Compatible with:

HID-80-EX39-8xx-BYP-PT-G2
HID-100-EX39-8xx-BYP-PT-G2
HID-120-EX39-8xx-BYP-PT