



KT-LED25T8-96G-850-D2

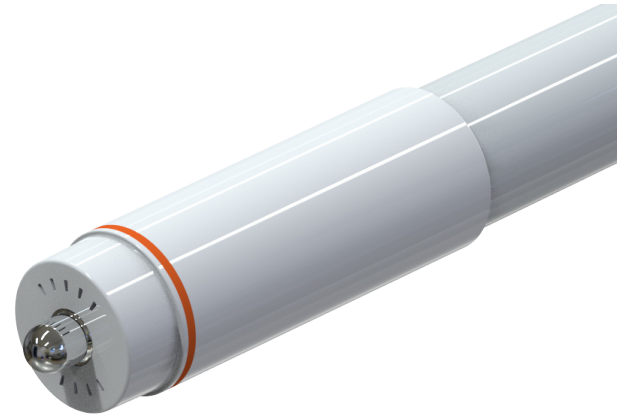
T8 LED LAMP

DESCRIPTION

25W T8 LED | 5000K | > 80 CRI | High-Efficiency | 8-Foot



LAMP TYPE: Linear
BULB TYPE: T8 LED
BASE TYPE: Fa8 (Single-Pin)
WATTAGE: 25W
COLOR TEMPERATURE: 5000K
COLOR RENDERING INDEX (CRI): > 80
WARRANTY: 5 Years



PRODUCT FEATURES

- Replacement for conventional T8/T12 8-foot, single-pin fluorescent lamp
- Double-ended line voltage wiring: Connect power to each end for simplified installation
- 50,000+ hour lifetime
- Approximately 50% more energy efficient than standard F96T12 lamps
- Environmentally friendly: No mercury used
- NSF listed: NSF/ANSI Standard 2: Food equipment, splash zone (component level—not for direct food zone without additional fixture considerations)
- Compatible with KT-EMRG-LED-12-1200-AC and KT-EMRG-LED-12-1200-AC /DF LED emergency back ups
- Includes 1 C-clips to be installed with the lamps into the fixture ballast cover to prevent any potential undesired lamp twisting or sagging
- Frosted lens eliminates pixelation
- UL classified
- Operating Temperature: (–20°C/–4°F) (45°C/113°F)
- Working Humidity: 30%-85%
- Integral driver (isolated): Eliminates the need for external driver or ballast
- 140+ lumens per Watt
- Instant startup
- Not rated for use in Vapor Tight style fixtures

OPERATING SPECIFICATIONS

ELECTRICAL CHARACTERISTICS

Input Voltage	Power Consumption	Power Factor	Input Current
120–277Vac	25W	>0.9	0.21A @ 120V 0.09A @ 277V

RATED LIFE

L70 (Hours)	50,000
-------------	--------

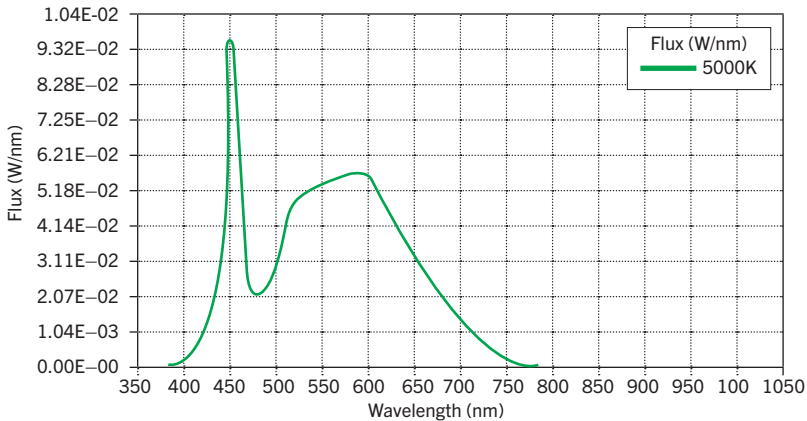
PHOTOMETRIC CHARACTERISTICS

Color Temperature (CCT)	5000K
Luminous Flux	3500 lm
Color Rendering Index (CRI)	>80
Efficacy	145 lm/W
Beam Angle	325°

KT-LED25T8-96G-850-D2

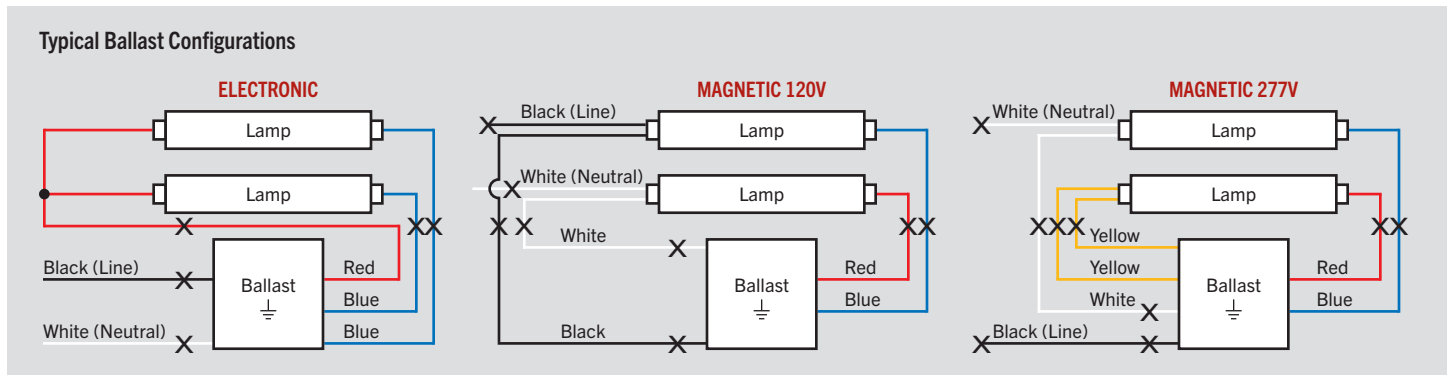
T8 LED LAMP

SPECTRAL DISTRIBUTION

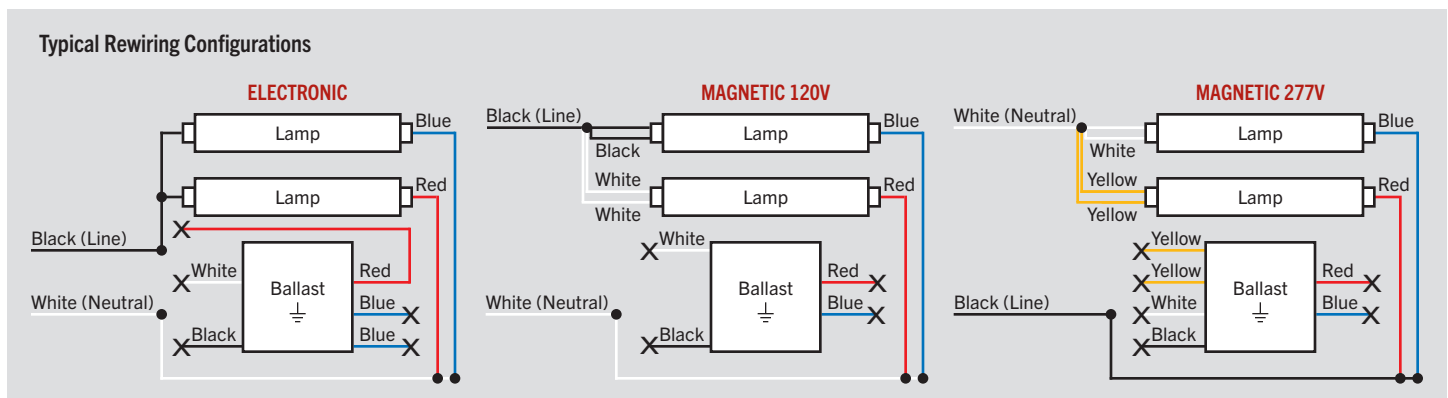


WIRING INSTRUCTIONS

1. Identify ballast configuration as shown below and cut all wires connected to the ballast accordingly.



2. Confirm that the lampholders in the fixture are single-pin Fa8 lampholders. These DirectDrive LED tubes require single-pin Fa8 lampholders.
3. Rewire the fixture using existing lampholders, as shown below, according to the original ballast wiring configuration.

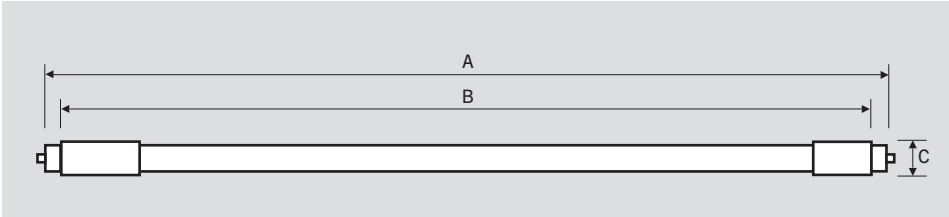




KT-LED25T8-96G-850-D2

T8 LED LAMP

PHYSICAL CHARACTERISTICS



LAMP DIMENSIONS

A (Body Length)	93.31"
B (Illuminated Length)	87.41"
C End Cap Diameter	1.31" × 1.31"
D Dimension	1.08"

NOMINAL LENGTH: 96"

BASE TYPE: Fa8 (Single-Pin)

ORDERING INFORMATION

ORDER CODE	PACK QTY.	UPC	EASY CODE
KT-LED25T8-96G-850-D2	10	843654140001	UWM-31

CATALOG NUMBER BREAKDOWN

KT-LED25T8-96G-8XX-D2

1 2 3 4 5 6 7 8 9

- | | |
|---------------------------|-----------------------|
| 1 Keystone Technologies | 6 Glass |
| 2 LED Lamp | 7 80 CRI |
| 3 Wattage | 8 Color Temperature |
| 4 Lamp Type | 9 Double Drive Series |
| 5 Nominal Length (Inches) | |