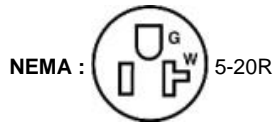




Color :  Gray

UPC Code : 078477364260

Country Of Origin : Mexico



Available Colors :



Black



Blue



Brown



Ivory



Light Almond



Red



White

M1636-GY

Lev-Lok Decora Plus Duplex Receptacle Outlet, Heavy-Duty Industrial Specification Grade, Smooth Face, 20 Amp, 125 Volt, Modular, NEMA 5-20R, 2-Pole, 3-Wire, Self-Grounding - Gray

Mating Lev-Lok Wiring Module Required for Use

The Lev-Lok® Modular Wiring Device System is engineered for fast and easy installation. These devices employ a simple twist and lock wiring module that ensures a safe, reliable connection while at the same time providing for extremely fast and easy installation. Lev-Lok brand wiring devices address the reliability and performance concerns of specification engineers without sacrificing the contractor's need for fast, easy installation. Available in extra heavy duty hospital and industrial grades, and heavy duty commercial grade platforms.

Technical Information

AC Horsepower Ratings

Horsepower Rating : 1 HP

Electrical Specifications

Amperage : 20 A

Current Interrupting : Certified for current interrupting at full rated current

Dielectric Voltage : Withstands 2000V per UL498

Grounding : Self-Grounding

Maximum Working Voltage : 125V as rated

Pole : 2

Temperature Rise : Max 30C after 250 cycles OL at 200 percent rated current

Voltage : 125 VAC

Wire : 3

Environmental Specifications

Flammability : Rated V-2 per UL94

Operating Temperature : -40°C to 60°C

Material Specifications

Base Material : Nylon

Cover Material : Nylon

Ground Clips : Brass

Line Contacts : 0.040" Thick Solid Brass

Locking Pins : Solid Brass

Mounting Screws : Triple Combination Head, Steel

Mounting Strap : Galvanized Steel with Riveted Ground Contacts

Mechanical Specifications

Product ID : Ratings are permanently marked on device

Termination : Modular

Product Features

Brand : Lev-Lok Decora Plus

Color : Gray

Device Type : Duplex Receptacle Outlet

Feature 4 : Smooth Face

Grade : Heavy-Duty Industrial Specification Grade

NEMA : 5-20R

Standards and Certifications

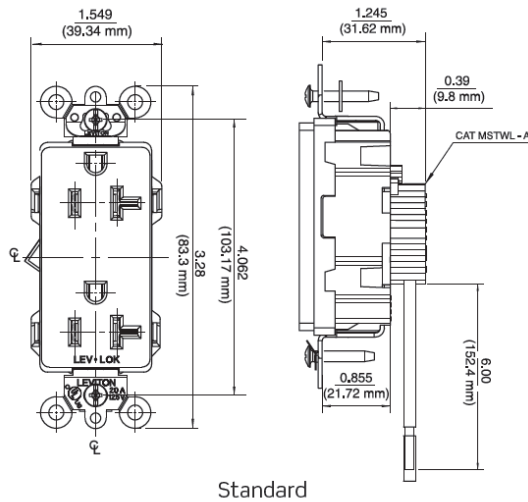
ANSI : C-73

NEMA : WD-1 & WD-6

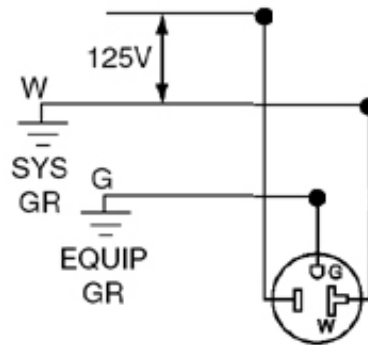
NOM Certified : 057

Warranty : 10-Year Limited

cULus : Listed



Wiring Diagram



5-20R

SPECIFICATION SUBMITTAL

JOB NAME: <input style="width: 90%;" type="text"/>	CATALOG NUMBERS: <input style="width: 90%;" type="text"/>	
JOB NUMBER: <input style="width: 90%;" type="text"/>	<input style="width: 90%;" type="text"/>	

Leviton Manufacturing Co., Inc.

201 North Service Road, Melville, NY 11747

Telephone: +1-800-323-8920 · FAX: +1-800-832-9538 · Tech Line (8:30AM-7:30PM E.S.T. Monday-Friday):

+1-800-824-3005

Leviton Manufacturing of Canada, Ltd.

165 Hymus Boulevard, Pointe Claire, Quebec H9R 1E9 · Telephone: +1-800-469-7890 ·

FAX: +1-800-824-3005 · www.leviton.com/canada

Leviton S. de R.L. de C.V.

Lago Tana 43, Mexico DF, Mexico CP 11290 · Tel.: (+52)55-5082-1040 · FAX: (+52)5386-

1797 · www.leviton.com.mx

Visit our Website at: www.leviton.com

© 2018 Leviton Manufacturing Co., Inc. All Rights Reserved. Subject to change without notice.

Leviton has a global presence.

If you would like to know where your local Leviton office is located please go to:

www.leviton.com/international/contacts/

