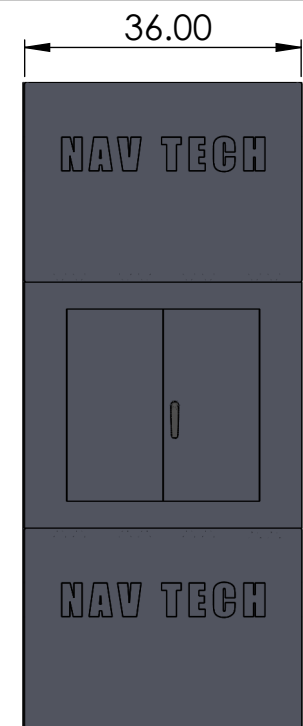
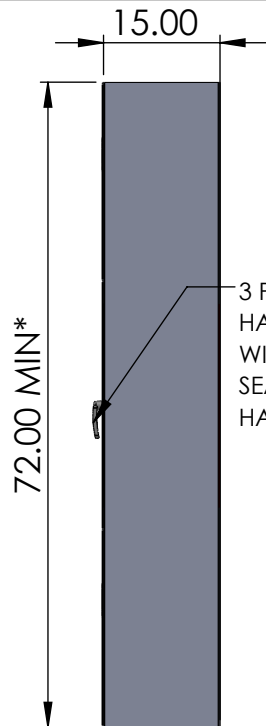


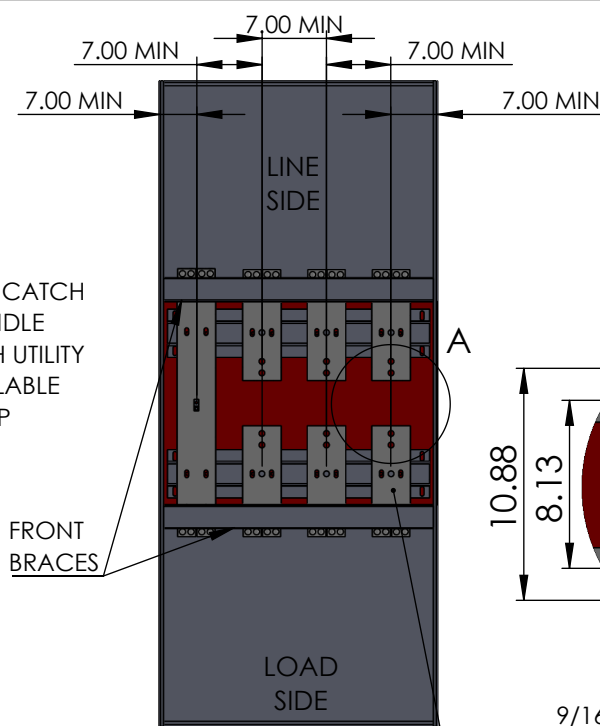
B



COVERED FRONT VIEW



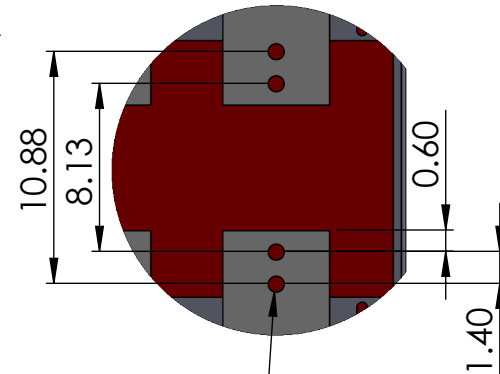
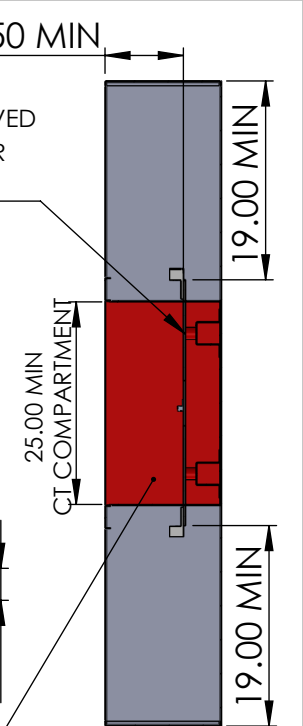
COVERED SIDE VIEW



OPEN FRONT VIEW

(1) 1/4" X 5" CU BUS

A

DETAIL A
SCALE 1 : 99/16" CT
MOUNTING
HOLE WITH
1/2"-13 STEEL
PRESS-FIT NUTS
AND BOLTSUL 746 APPROVED
BUS INSULATOR
STANDOFFS

SECTIONED SIDE VIEW

INSULATING GLASTIC PANEL
INSERTS ON TOP, BOTTOM,
SIDES AND REAR OF CT
SECTION ISOLATING THE
COMPARTMENT. CONSTRUCTED
IN CONFORMANCE WITH UL 891

NOTES:

1. BOX AND COVER CONSTRUCTION - GALV SHEET STEEL (12GA)
2. FINISH: POWDERCOAT GRAY ENAMEL.
3. DOOR SWING SHALL BE GREATER THAN 90°.
4. LINE, LOAD AND CT COMPARTMENT COVERS SHALL HAVE PROVISIONS FOR UTILITY COMPANY SEALS.
5. LINE AND LOAD LUGS TO BE MECHANICAL, QUANTITY AND SIZE TO BE DETERMINED BEFORE RELEASED FOR MANUFACTURING, LINE (4) 600 MCM PER Ø & NEUTRAL, LOAD (4) 600 MCM PER Ø & NEUTRAL - IS STANDARD.
6. LINE AND LOAD SIDES OF THE CABINET SHALL BE CLEARLY AND PERMANENTLY MARKED BY NAVTECH - TOP FEED IS STANDARD.
7. PHASE & NEUTRAL BUS HAS 1/4" - 20 TAPPED HOLE IN CT COMPARTMENT FOR CT CONNECTION.
8. ALL CT COMPARTMENT NUTS, BOLTS AND BELLEVILLE WASHERS SHALL BE GALVANIZED PER PSEG SPEC.
9. CT BOLTING TORQUE VALUES SHALL BE AFFIXED WITHIN CT COMPARTMENT - 1/2"-13: 40 FT-LB.
10. BUS BARS - SILVER PLATED COPPER 98% CONDUCTIVITY.

* 72" CABINET HEIGHT IS STANDARD - TALLER UNITS AVAILABLE BY REQUEST.

	NAME	DATE
DRAWN BY	N. BOSETTI	11/18/2024
APPROVED BY		

PROPRIETARY AND CONFIDENTIAL
THE INFORMATION CONTAINED IN THIS
DRAWING IS THE SOLE PROPERTY OF
Nav-Tech Inc. ANY REPRODUCTION IN
PART OR AS A WHOLE WITHOUT THE
WRITTEN PERMISSION OF Nav-Tech Inc.
IS PROHIBITED.

NAV-TECH
INCORPORATED

155 MARCUS BLVD
HAUPPAUGE, NEW YORK 11788
PH: (718) 257-2111 FAX: (718) 257-2626

UNLESS OTHERWISE SPECIFIED:
ALL DIMENSIONS ARE NOMINAL UNLESS
EXPLICITLY CALLED OUT OTHERWISE

MAT'L:	12 GA GALV
FINISH:	POWDER COAT ANSI 61 GY
WEIGHT:	N/A
UNLESS OTHERWISE SPECIFIED	
1. REMOVE ALL BURRS AND BREAK ALL SHARP EDGES .015 X 45° OR .015R	
2. DIMENSIONAL LIMITS APPLY AFTER PLATING	
3. 125/ MACHINED SURFACES EXCEPT AS NOTED	

DRAWING TITLE: INDOOR 1200 AMP CT CABINET PSEG	
PART #: NAV-PG-CT-12	
DESCRIPTION: 1200 AMP CT CABINET FOR PSEG LONG ISLAND NEMA 1 CONSTRUCTION SILVER PLATED COPPER BUS BARS LINE ENTRY TOP SIDE ; LOAD ENTRY BOTTOM SIDE	
DO NOT SCALE DRAWING	SCALE 1:25
SIZE A	SHEET 1 OF 1
REV. 2	

B

A

2

1