

NC2-431 / NC2-436 / NC2-438

4" Sapphire II High Lumen Reflectors

Source: 15W to 30W LED
900lm to 2500lm

PRODUCT DESCRIPTION

The Sapphire II COB Series is an architectural grade LED high lumen downlight. The Sapphire II uses the latest COB technology by Cree®. The COB allows for better optic control offering 3 beam spreads. Beam spreads focus the light down to the work plane from high ceiling applications. The reflectors have been designed for the high efficiency (LPW) while providing low aperture brightness. The Sapphire II COB Series is proudly assembled in the USA.

FEATURES

- Cree® COB technology
- Shatter resistant lens
- Specifiable beam spreads
- 4" deep cone reflectors, wall wash and deco glass
- 900lm, 1500lm and 2500lm LED packages
- 2700K, 3000K, 3500K and 4000K @ 90+ CRI
- 5-year limited warranty
- cULus listed for wet locations
- ENERGY STAR certified

ELECTRICAL

Lumens / Wattage: L09 = 900lm / 15W; L15 = 1500lm / 18W; L25 = 2500lm / 30W

Color Temperature: 2700K, 3000K, 3500K, 4000K
CRI: 90+CRI

Beam Spread: (S) Spot; **(M)** Narrow Flood; **(F)** Flood
Operating Temp.: 0° to 45°C ambient temperature

COMPATIBLE FRAME-INS

Reflector is only compatible with respective Sapphire II series frames manufactured by Nora Lighting.

CATALOG NO.	DESCRIPTION
NCAH2-430	4" Universal New Construction Frame-In
NCHR2-434	4" Remodel Frame-In

SPECIFICATION

Reflector: Deep cone self flanged reflector spun from 0.050 high grade aluminum provides even illumination and visual comfort. The deep cone reflectors provide 55+ degree cut-off. NC2-438 includes 3 studs mounted in the flange for attaching decorative glass. Decorative glass will reduce the amount of usable light by 10 to 30%, depending on the selected glass.

Reflector Assembly: The reflector assembly includes the LED optical package and heat sink mounted on top. Reflector assembly easily wires to dedicated frame with lockable quick connect.

Emergency: NC2-431 is compatible with integral emergency test switch, must specify.

LABELS AND LISTINGS

- cULus Listed for Wet Location when used with compatible frame-in
- ENERGY STAR certified
- 5-Year Limited Warranty
- RoHS Compliant



Type

Project

Catalog No.

Notes

PRODUCT IMAGES



NC2-431 Open Reflector

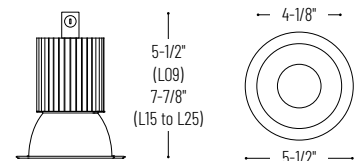


NC2-436 Wall Wash Reflector



NC2-438 Decorative Glass Reflector
(Specify glass separately)

PRODUCT DIMENSIONS



4" Sapphire II Reflectors - Dedicated Frame-In Required

Reflector Type	Lumens / Wattage	Color Temp.	Beam Spread	Reflector / Flange Finish	Emergency
NC2-431 = Open Reflector	L09 = 900lm / 15W	27 = 2700K	S = Spot	BSF = Black / Self Flanged	EMI - Integral emergency test switch ¹
NC2-436 = Wall Wash	L15 = 1500lm / 18W	30 = 3000K	M = Narrow Flood	BWSF = Black / White	
NC2-438 = Deco Glass*	L25 = 2500lm / 30W	35 = 3500K	F = Flood	DSF = Clear Diffused / Self Flanged	
		40 = 4000K		DWSF = Clear Diffused / White	
				HSF = Haze / Self Flanged	
				HWSF = Haze / White	
				WSF = White / Self Flanged	

*Deco Glass Option

NTG-4SPH-CF Tempered Clear Glass with Frosted Center

NTG-4SPH-FC Tempered Blue Glass with Clear Center

NTG-4SPH-HC Tempered Clear Glass with Frosted Center and 3-1/8" Open Center

¹ Compatible with NC2-431 only, must specify on frame-in

Example: NC2-431L1530SWSF = 4" Sapphire II Open Reflector, 1500lm / 18W LED, 3000K, Spot Beam Spread, White / Self Flange Finish

NCAH2-430 / NCHR2-434

4" Sapphire II High Lumen Frame-In's

Source: 15W to 30W LED
900lm to 2500lm

Type

Project

Catalog No.

Notes

PRODUCT DESCRIPTION

The Sapphire II COB Series is an architectural grade LED high lumen downlight. The Sapphire II uses the latest COB technology by Cree®. The COB allows for better optic control offering 3 beam spreads. Beam spreads focus the light down to the work plane from high ceiling applications. The Sapphire II series is available in 4", 6" or 8" apertures and also in new construction or remodel frame-in's.

CONSTRUCTION

Plaster Frame: Architectural quality 0.050 galvanized steel ring riveted to 0.064 steel junction box and driver tray. Plaster frame opening includes (3) "butterfly" spring clips to hold reflector assembly in place.

Universal: Frame-in includes two adjustable bar hangers and universal brackets that accept flat bar hangers, C-Channel (ordered separately) or rigid 1/2" conduit. Adjustable hanger bars with captive nails, alignment foot, T-Bar slot are included on frame. Includes adjustable deep ceiling collar.

Remodel: Designed for installation in existing ceilings. Three high tension tempered steel springs secure remodel housings evenly to the ceiling; hole cutout template provided for convenience. Can be installed in ceiling thickness up to 5/8" max.

Minimum Clearances: Frames require a minimum of 3" from thermal insulation and 1/2" from adjacent building component.

Junction Box: Plaster frame integrated 29 cubic inch 0.064" thick galvanized steel, with seven 1/2" knockouts, four pryouts, and snap on cover. Electrical connections are made through a single junction box door. Green wire provided for installations with ground wire fed through PVC pipe conduit. Junction box connects to reflector assembly with lockable quick connect.

Thermal Protector: External thermal device is located on the junction box.

Driver: Isolated driver separates the primary side from the secondary side.

ELECTRICAL

Input Voltage: 120V or 277V

Lumens / Wattage:

L09 = 900lm / 15W; **L15** = 1500lm / 18W;

L25 = 2500lm / 30W

Operating Temp.: 0°C to 45°C ambient temperature

Dimming: Triac, ELV or 0-10V dimming

Check complete dimmer list at www.NoraLighting.com in the "Compatibility" page under "Resources" tab

COMPATIBLE REFLECTORS

CATALOG NO.	DESCRIPTION
NC2-431	4" Open Reflector
NC2-436	4" Wall Wash Reflector
NC2-438	4" Decorative Glass Reflector

Emergency LED Driver (BSL17C-C2)

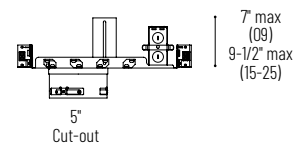
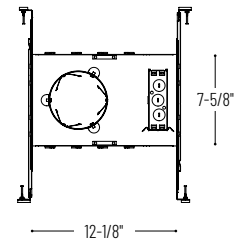
- Up to 7.5W emergency illumination with LEDs.
- Illumination Time: 90min
- Voltage: 120/277 VAC, 60Hz
- Output Voltage: 15.0-50.0 VDC
- Available with remote or integral test switch, must specify

LABELS AND LISTINGS

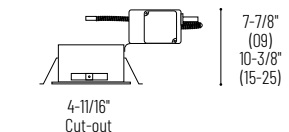
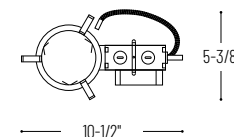
- cULus Listed for Damp Location (Wet Location when used with compatible reflector)
- 5-Year Limited Warranty
- RoHS Compliant



PRODUCT IMAGES AND DIMENSIONS



NCAH2-430 Universal Frame-In



NCHR2-434 Remodel Frame-In

4" Sapphire II High Lumen Frame-In's - Compatible with Sapphire II Reflectors

Frame Type	Lumens / Wattage	Driver	Emergency
NCAH2-430/ - Universal New Construction	09 = 900lm / 15W	LE2 = 277V Input; 0-10V dimming	EM - Emergency Pack w/ Remote Test Switch
NCHR2-434/ - Remodel	15 = 1500lm / 18W	LE3 = 120V Input; Triac/ELV dimming	EMI - Emergency Pack w/ Integral Test Switch ¹
	25 = 2500lm / 30W	LE5 = 120V Input; 0-10V dimming	

¹ Must specify on reflector

Example: NCAH2-430/15LE5EM = 4" Sapphire II Universal LED New Construction Frame-In, 1500lm / 18W, 120V Input, Emergency with Remote Test Switch

PHOTOMETRICS

4" Sapphire II Series

Type

Project

Catalog No.

Notes

Test Information

Test Number: 727461

Part Number: NC2-431L2540SWSF

Beam Spread: Spot

Lumens: 2389lm

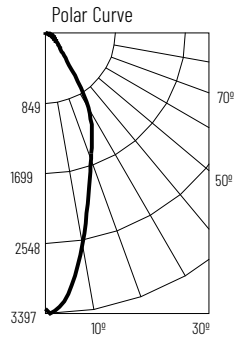
Wattage: 29.3W

Efficacy: 81lpw

CCT / CRI: 4000K / 90 CRI

Spacing Criteria (0°-180): 0.6

Spacing Criteria (90°-270): 0.6



Illuminance at a Distance

Distance from Luminaire	FC at Nadir	Beam Diameter
4'	209fc	2'-10"
6'	92.8fc	4'-2"
8'	52.2fc	5'-7"
10'	33.4fc	7'
12'	23.2fc	8'-5"

Zonal Lumen Summary

Zone	Lumens	% Luminaire
0-30	1450	60.7
0-40	1847	77.3
0-60	2181	91.3
0-90	2369	99.2
90-180	20	0.8
0-180	2389	100

Candela Table

Vertical Angles	Candela
0	3340
5	3152
15	2018
25	1340
35	621
45	251

Test Information

Test Number: 727477

Part Number: Narrow Flood

Lumens: 2412lm

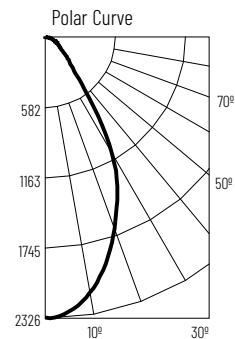
Wattage: 29.3W

Efficacy: 82lpw

CCT / CRI: 4000K / 90 CRI

Spacing Criteria (0°-180): 0.88

Spacing Criteria (90°-270): 0.88



Illuminance at a Distance

Distance from Luminaire	FC at Nadir	Beam Diameter
4'	145fc	4'-6"
6'	64.5fc	6'-8"
8'	36.3fc	8'-11"
10'	23.2fc	11'-2"
12'	16.1fc	13'-5"

Zonal Lumen Summary

Zone	Lumens	% Luminaire
0-30	1394	57.8
0-40	1831	75.9
0-60	2199	91.2
0-90	2392	99.2
90-180	20	0.8
0-180	2412	100

Candela Table

Vertical Angles	Candela
0	2321
5	2281
15	1935
25	1418
35	693
45	286

Test Information

Test Number: 727489

Part Number: NC2-431L2540FWSF

Part Number: Flood

Lumens: 1998lm

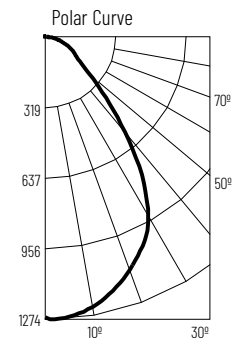
Wattage: 29.5W

Efficacy: 68lpw

CCT / CRI: 4000K / 90 CRI

Spacing Criteria (0°-180): 1.16

Spacing Criteria (90°-270): 1.14



Illuminance at a Distance

Distance from Luminaire	FC at Nadir	Beam Diameter
4'	79fc	5'-11"
6'	35.1fc	8'-11"
8'	19.7fc	11'-10"
10'	12.6fc	14'-10"
12'	8.8fc	17'-8"

Zonal Lumen Summary

Zone	Lumens	% Luminaire
0-30	905	45.3
0-40	1334	66.7
0-60	1763	88.2
0-90	1973	98.7
90-180	25	1.3
0-180	1998	100

Candela Table

Vertical Angles	Candela
0	1264
5	1264
15	1197
25	1060
35	797
45	412

Lumen Output Multipliers

Color Temperature: 2700K (0.84), 3000K (0.93), 3500K (0.95), 4000K (1.00)

Lumen Package: L09 (0.47), L15 (0.63), L25 (1.00)