

NHIOICD-48 / NHIOICDCP-48

4" Iolite IC Air-Tight New Construction Housing

Source: 12W or 13W LED

800lm or 1000lm

PRODUCT DESCRIPTION

New construction housing for use in insulated ceilings can be in direct contact with insulation. Air-tight construction provides energy savings by reducing the flow of air through the ceiling. Patented design allows for easy, tool-less removal of the driver.

SPECIFICATION

Housing: 0.040" Aluminum shallow housing can be installed in 1/2" ceiling thickness, an extension collar (NIO-4EXTC2) is available for ceiling thickness up to 2".

Patented Driver Assembly: Allows driver to slide out of housing without tools from the room side.

Air Flow Restriction: Meets requirements of Air-Tight (AT) <2CFM (cubic feet per minute) in accordance with ASTM-283 Air-Tight requirements.

Clearance: "IC" Insulated ceiling housings are direct contact rated. Not to be used in direct contact with spray foam insulation.

Bar Hangers: Two 13-3/4" to 24-1/2" adjustable bar hangers with captive nails are included on housing. Bar hangers are parallel to junction box, but can be repositioned 90° perpendicular to junction box if desired. "L"-shaped bar hanger foot to align to bottom of construction joist. A T-bar notch allows for easy installation in a suspended ceiling.

Junction Box: Pre-wired 25 cubic inch 0.064" thick galvanized steel, with seven 1/2" knockouts, four Romex® pryouts, and snap on covers. All leads are #18AWG wire, the ground wire is connected to the bottom, and quick connectors are supplied on all leads. Maximum of 8 no. 12 AWG through branch circuit conductors suitable for at least 90°C permitted in junction box. Junction box is accessible from the room side through housing opening.

EMERGENCY

Pre-Wired: Housing can be specified with connections for emergency battery installation. Requires access above ceiling. Must specify battery with remote test switch separately (NEPK-07LEDUNV).

Note: Pre-Wired is not compatible with Chicago Plenum housings

Integrated: Compact emergency driver is mounted directly to the junction box allowing below ceiling access. Compared to traditional emergency driver that are larger and remote mounted which requires access above ceiling. 90 minute illumination time with 6W output in emergency mode. Battery requires 24 hours to recharge and consumes 3W when charging. Remote test switch and 3' cable included.

ELECTRICAL	LE3	LE4	LUPEQ
Input Voltage	120V	120-277V	120/277V
Input Power	13W	12W	13W
Power Factor	≥0.90		
Dimming	Triac / ELV	Triac / ELV / 0-10V	Lutron EcoSystem
Operating Temp.	40°C max.		

COMPATIBLE TRIMS

CATALOG NO.	DESCRIPTION
NIO-4RC	4" Round Adjustable Cone Reflector
NIO-4SC	4" Square Adjustable Cone Reflector
NIO-4RG	4" Round Adjustable Surface Gimbal
NIO-4SG	4" Square Adjustable Surface Gimbal
NIO-4RD	4" Round Adjustable Deep Reflector
NIO-4SD	4" Square Adjustable Deep Reflector
NIO-4RNDC	4" Round Downlight
NIO-4SNDC	4" Square Downlight / Round Aperture
NIO-4SND SQ	4" Square Downlight / Square Aperture
NIO-4SDSQ	4" Square Adjustable / Square Aperture
NIO-4RPH	4" Round Pinhole
NIO-4RPHA	4" Round Adjustable Pinhole
NIO-4RSL	4" Round Adjustable Slot Aperture
NIO-4RNB	4" Round Bullnose
NIO-4SNB	4" Square Bullnose
NIO-4RW	4" Round Wall Wash
NIO-4SW	4" Square Wall Wash
NIO-4RTSLA	4" Round Trimless Adjustable Slot
NIO-4RTLA	4" Round Trimless Adjustable
NIO-4RTLND	4" Round Trimless Downlight
NIO-4STLND	4" Square Trimless Downlight

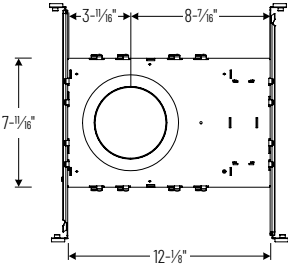
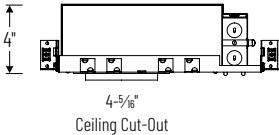
LABELS AND LISTINGS

- cULus Listed for Damp Locations (Wet Locations when used with compatible trim)
- ENERGY STAR certified
- 5-Year Limited Warranty
- RoHS compliant
- FCC compliant
- Patent #D824567S
- Meets or exceeds ASTM-283 Air-Tight requirements



Type
Project
Catalog No.
Notes

PRODUCT IMAGES AND DIMENSIONS



4" Iolite IC Air-Tight New Construction Housing - Compatible with NIO-4 trims

Housing Type / Lumens	Driver / Dimming	Optional Emergency
NHIOICD-48 = IC Air-Tight 800lm or 1000lm	LE3 = 120V input; Triac / ELV dimming LE4 = 120-277V input; Triac / ELV / 0-10V dimming LUPEQ = 120/277V input; Lutron Hi-Lume Premier 0.1% EcoSystem with Soft-On, Fade-to-Black (consult factory)	/PEM = Pre-Wired for Remote Emergency /EM2 = Integrated Emergency w/ Remote Test Switch
NHIOICDCP-48 = Chicago Plenum 800lm or 1000lm	LE3 = 120V input; Triac / ELV dimming LE4 = 120-277V input; Triac / ELV / 0-10V dimming LUPEQ = 120/277V input; Lutron Hi-Lume Premier 0.1% EcoSystem with Soft-On, Fade-to-Black (consult factory)	

Optional Accessories

Description
NEPK-07LEDUNV = Remote Emergency Battery w/Test Switch NIO-4EXTC2 = Ceiling Extension Collar up to 2"

Example: NHIOICD-48LE3 = 4" Iolite IC Air-Tight New Construction Housing, 120V input; Triac / ELV dimming