

NLCBC-45 COBALT Series - 4" 95 CRI Recessed Retrofit Downlight

Source: 12W Chip on Board 1000lm LED (845 Delivered)

PRODUCT DESCRIPTION

Nora Lighting's 4" LED Cobalt Luminaires are cULus listed for use in existing 4" IC or Non-IC housings manufactured by Nora and others. The units provide 1000 Lumen output, drawing 12W and rendering 95CRI. Nora's 4" Cobalt LEDs integrate the latest from the Cree® COB family of LED arrays, giving bright spectacular light output and low power consumption. An obvious and smart choice for Green Energy efficient lighting in commercial and residential applications.

FEATURES

- 5 year limited warranty
- Cree® COB LED
- Dimmable
- cULus Listed, Energy Star & Title 24 compliant
- 1000lm utilizes only 12W
- Available in 2700K, 3000K and 4000K color temperature, 95 CRI
- GU24 Socket adapter available for use with GU24 base housings- Includes Medium-Base Socket kit

CONSTRUCTION

Trim: Aluminum spun reflector (NLCBC-451) with deep set diffused lens for excellent visual comfort while providing high lumen output.

Aluminum spun baffle trim (NLCBC-452) with deep set diffused lens and deep grooves to reduce aperture glare while providing high lumen output.

Lens: Shatter proof diffused poly carbonate lens.

Deep Trim: The deep trim places the LED optics deeper than the standard increasing the visual comfort. Additionally the deep cones reduces board images when off.

RETROFIT

Cobalt Series Downlights include NRA-211 Medium Base screw-in socket for retrofitting into existing Medium Base downlight housings.

ELECTRICAL SYSTEM

Voltage: 120VAC

Current: 280mA

Power Consumption: 12 Watts

Light Source: Cree COB

Lumens: 1000 lm (845 Delivered)

CRI: 95 CRI

LED Driver: Built-in driver

Operating Temperature: 0°C to 75°C ambient temperature

Life Expectancy: 50,000 hours

DIMMABLE

Nora LED Cobalt Series works with standard leading and trailing edge dimming technologies. Dimming with trailing-edge dimmers (electronic) are 5-100% and for leading-edge dimmers (incandescent) 10-100%. There may be some cases that require more than one lighting fixture to be used to meet minimum dimmer load. Consult with dimmer manufacturer. [Click Here](#) or refer to www.NoraLighting.com for complete updated dimmer list in the "Compatibility" page under the "Resource" tab.

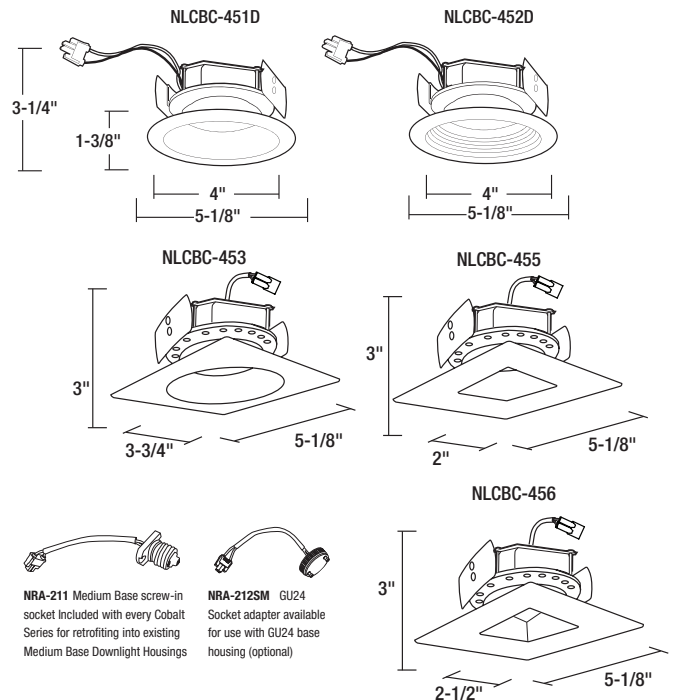
4" Cobalt 1000 Lumens Recessed Retrofit Downlight

Catalog No.	Color Temp.	Finish	Option
NLCBC-451D = Reflector	27 = 2700K	BZ = Bronze	Blank = 120V EM = 277V
	30 = 3000K	DW= Diffused Clear/White	
	40 = 4000K	HZW = Haze/ White WW = White	
NLCBC-452D = Baffle	27 = 2700K	BZ = Bronze	
	30 = 3000K	WW = White	
	40 = 4000K		
NLCBC-453 = Sq. Round	27 = 2700K	WW = White	
NLCBC-455 = Sq. Pinhole	30 = 3000K		
NLCBC-456 = Sq. Regressed			

3000K & 3500K LE4 Options

NLCBC-451D = Reflector	30 = 3000K	DD = Diffused/Diffused	LE4 = 120V 0-10V/ 120V Triac
	35 = 3500K	WW = White	/ 120V or 277V 0-10V Dimming
		DW= Diffused Clear/White	LE4EM = LE4 Dimming and EM

DIMENSIONS



LABELS & LISTINGS

cULus Listed
Title 24 Compliant
Energy Star Rated



COMPATIBLE HOUSINGS

FireBox

NFBIC-4LMRAT 4" ICAT Dedicated LED 2-Hour Fire Rated

New Construction

- NSIC-401QAT** 4" ICAT Line Voltage
- NS-401QAT** 4" AT Line Voltage
- NHIC-4G24AT** 4" ICAT GU24 (Specify NRA-212 adaptor separately)
- NHIC-4LMRAT** 4" ICAT Dedicated LED
- NHIC-4LMRAT/277** 4" ICAT Dedicated LED, 277V
- NHIC-4LMRAT/4W** 4" IC Air Tight Dedicated Housing Pre-wired for 0-10V dimming Cobalt Series
- NHIC-4LMRAT/EM** 4" IC Air Tight Dedicated Housing Pre-wired for Emergency Cobalt Series - Includes EM battery and remote test switch
- NHIC-4LMRAT/6WEM** 4" IC Air Tight Dedicated Housing Pre-wired for Emergency and 0-10V dimming Cobalt Series - Includes EM battery and remote test switch

Remodel

- NSR-404QAT** 4" AT Line Voltage
- NHRIC-4G24AT** 4" ICAT GU24 (Specify NRA-212 adaptor separately)
- NHRIC-4LMRAT** 4" ICAT Dedicated LED
- NHRIC-4LMRAT/4W** 4" IC Air Tight Remodel Housing Pre-wired for 0-10V dimming Cobalt Series

Example: NLCBC-45530WW 4" Cobalt Square Pinhole LED Retrofit, 90+ CRI, 3000K, White Finish, 120V