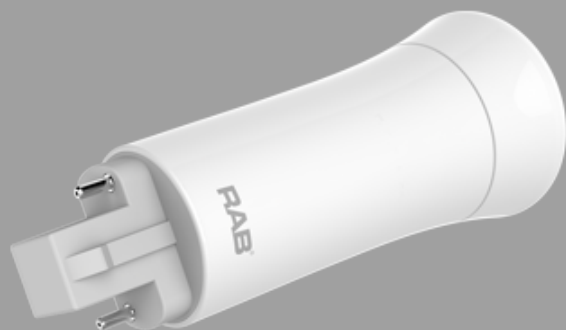


Project:

Type:

Prepared By:

Date:



UPC: 019813507477



## Features and Benefits

Replaces 18W/26W/32W G24d & G24q CFL Lamps

Ballast Bypass. Integral Driver enables lamp to be wired directly to line voltage without need for an external driver or ballast

Compatible with G24d / GX24d & G24q / GX24q installations

50,000 hour Lifespan

Environmentally friendly, no mercury used

UL Classified

Rated for use in enclosed and open fixtures in dry or damp locations

Non-Dimmable

5 Year No Compromise Warranty

## Technical Specifications

### Performance

#### Product Type:

Compact

#### Input Wattage:

9W

#### Efficacy:

100 lm/W

#### Color Accuracy (CRI):

82 CRI

#### L70 Lifespan:

50,000 Hours

### Construction

#### Bulb Shape:

PLC

#### Finish:

Frosted

#### Base Type:

G24d/G24q

#### For Use Outdoors in Open Fixtures:

No

### LED Characteristics

#### Color Temperature:

2700K Soft White

### Electrical

#### Operating Frequency:

50/60Hz

#### Input Voltage:

120-277V AC

### Installation

#### Installation Type:

Type B, Ballast Bypass

#### Installation Orientation:

Vertical

### Compliance

#### CEC Status:

Lawful for sale in California

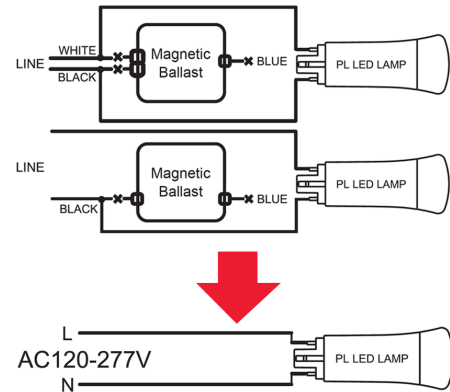
#### Application:

Suitable for damp locations and totally enclosed fixtures.

### Case and Pallet Dimensions

	QTY	LENGTH (in)	WIDTH (in)	HEIGHT (in)
CASE	12	8.1	6.1	5.1
PALLET	2880	0	0	0

### Wiring Diagram



### Dimension

