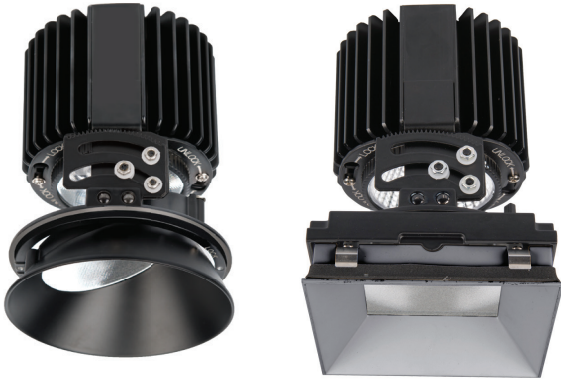


R4RAL, R4SAL

4.5" Volta - Adjustable Invisible Trim

WAC LIGHTING

Responsible Lighting®



Fixture Type:

Catalog Number:

Project:

Location:

PRODUCT DESCRIPTION

Volta LED downlight series represents an innovation in design and technology for architectural lighting. This high lumen and adaptable family of fixtures with a comprehensive set of round and square fittings, affords a sustainable solution for commercial, corporate, and upscale residential applications.

FEATURES

- Center beam alignment retained throughout adjustment range
- 0-45° vertical and 365° horizontal lockable hot aiming
- Indexed vertical scaling for precise and accurate alignment
- Integral patterned tempered trim lens included standard
- Compatible with a wide range of accessories
- 5 year WAC Lighting product warranty

SPECIFICATIONS

Construction: Durable die-cast aluminum construction

Input: Universal 120 - 277V AC 50/60 Hz

Dimming: Electronic Low Voltage (ELV): 100%-5% (120V only)
0-10V: 100%-0% (120 - 277V)

Light Source: High output 3-step Mac Adam Ellipse COB
Rated life of 50,000 hours at L70

Mounting: Heavy gauge retention clips support trim firmly. Safety cabling standard.
Ceiling cut out (Round): Ø 5 1/8"
Ceiling cut out (Square): 5 1/8" x 5 1/8"
Accommodates ceiling thickness of 1/2" - 1" up to 45°, 1 1/2" up to 35°

Finish: Electrostatically powder coated White, Black. Enamel coated Haze, Plated Bronze

Standards: ETL & cETL Wet location Listed

TRIMS (ORDER HOUSING SEPARATELY)

Model	Beam Angle	Reference Output*			Color Temp	CRI	Finishes	Reflector/Trim
		Lumens	CBCP	Lumens/Watt				
	S 15°	1215	10910	56	827 2700K 85 927 2700K 90 830 3000K 85 930 3000K 90 835 3500K 85 840 4000K 85	85	BK Black HZ Haze WT White CB Bronze	
	N 25°	2340	9250	69				
	F 40°	2085	4720	63				
	S 15°	1140	9175	53				
	N 20°	1960	8340	57				
	F 40°	1770	4495	52				

*Reference output shows **830**(85CRI 3000K) trim with **36** housing. Use multiplier table below to determine the output for other combinations.

Multiplier		TRIM					
		827	927	830	930	835	840
HOUSING	36	0.95	0.81	1.00	0.86	1.05	1.07
	25	0.66	0.56	0.69	0.59	0.73	0.74
	15	0.43	0.37	0.45	0.39	0.48	0.49

R4 AL - -

Example: **R4RAL-S827-WT**

Please see next page for housing units(required)

wacighting.com
Phone (800) 526.2588
Fax (800) 526.2585

Headquarters/Eastern Distribution Center
44 Harbor Park Drive
Port Washington, NY 11050

Central Distribution Center
1600 Distribution Ct
Lithia Springs, GA 30122

Western Distribution Center
1750 Archibald Avenue
Ontario, CA 91760

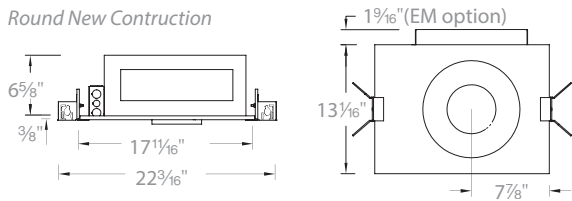
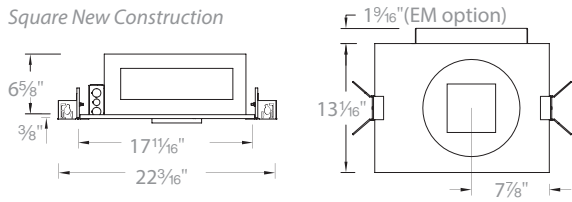
R4RAL, R4SAL

4.5" Volta - Adjustable Invisible Trim

WAC LIGHTING

Responsible Lighting®

HOUSINGS (REQUIRED)

	Model	Power*	S	N, F	Rating	Emergency Backup
Round New Construction 	R4RNL Airtight	15	10W	15W	IC rated	EM Emergency backup battery (OPTIONAL)
	R4RCL Airtight, Chicago Plenum	25	15W	23W	IC rated	
		36	22W	34W	Non-IC	
Square New Construction 	R4SNL Airtight	15	10W	15W	IC rated	EM Emergency backup battery (OPTIONAL)
	R4SCL Airtight, Chicago Plenum	25	15W	23W	IC rated	
		36	22W	34W	Non-IC	

Invisible Trim housings come included with die-cast spackle flange.

R4 -

Example: **R4RNL-15** or **R4RNL-15EM** (with Emergency backup battery)

Invisible Trim housings come included with die-cast spackle frame.

Field Replaceable Driver

D-R4N-15	Driver for 15W New Construction Hsg
D-R4N-25	Driver for 23W New Construction Hsg
D-R4N-36	Driver for 34W New Construction Hsg

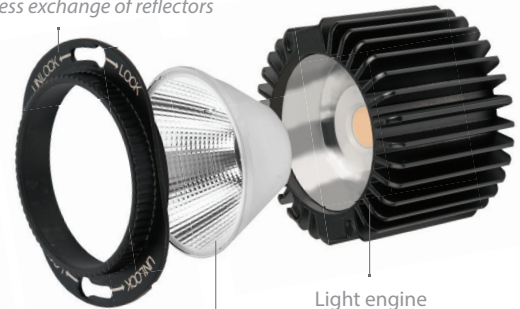
FIELD CHANGEABLE GLARE CONTROL AND OPTIC SYSTEM

Note: Maximum 35° vertical adjustment with accessory use

Accessory holder
Holds up to two lenses or
One lens and one glare control



Optical cartridge
Allows tool-less exchange of reflectors



Reflector
For narrow flood, flood, and wide flood.
Spot distribution features dedicated module.

Accessory holder

LENS-73-HLD

Required to hold lens and glare control accessories

Glare control accessories

LENS-73-HCL

Honeycomb Louver

LENS-73-CRL

Cross Louver

LENS-73-SNOOT

Snoot

Lens

LENS-73-AMB

Amber lens

LENS-73-RED

Red lens

LENS-73-FR

Frosted lens

LENS-73-SPR

Spread lens

LENS-73-BEL

Beam Elongating

Interchangeable Reflector

REF-R4-N

Narrow Flood beam reflector

REF-R4-F

Flood beam reflector

REF-R4-W

Wide beam reflector

waclighting.com

Phone (800) 526.2588

Fax (800) 526.2585

Headquarters/Eastern Distribution Center

44 Harbor Park Drive

Port Washington, NY 11050

Central Distribution Center

1600 Distribution Ct

Lithia Springs, GA 30122

Western Distribution Center

1750 Archibald Avenue

Ontario, CA 91760

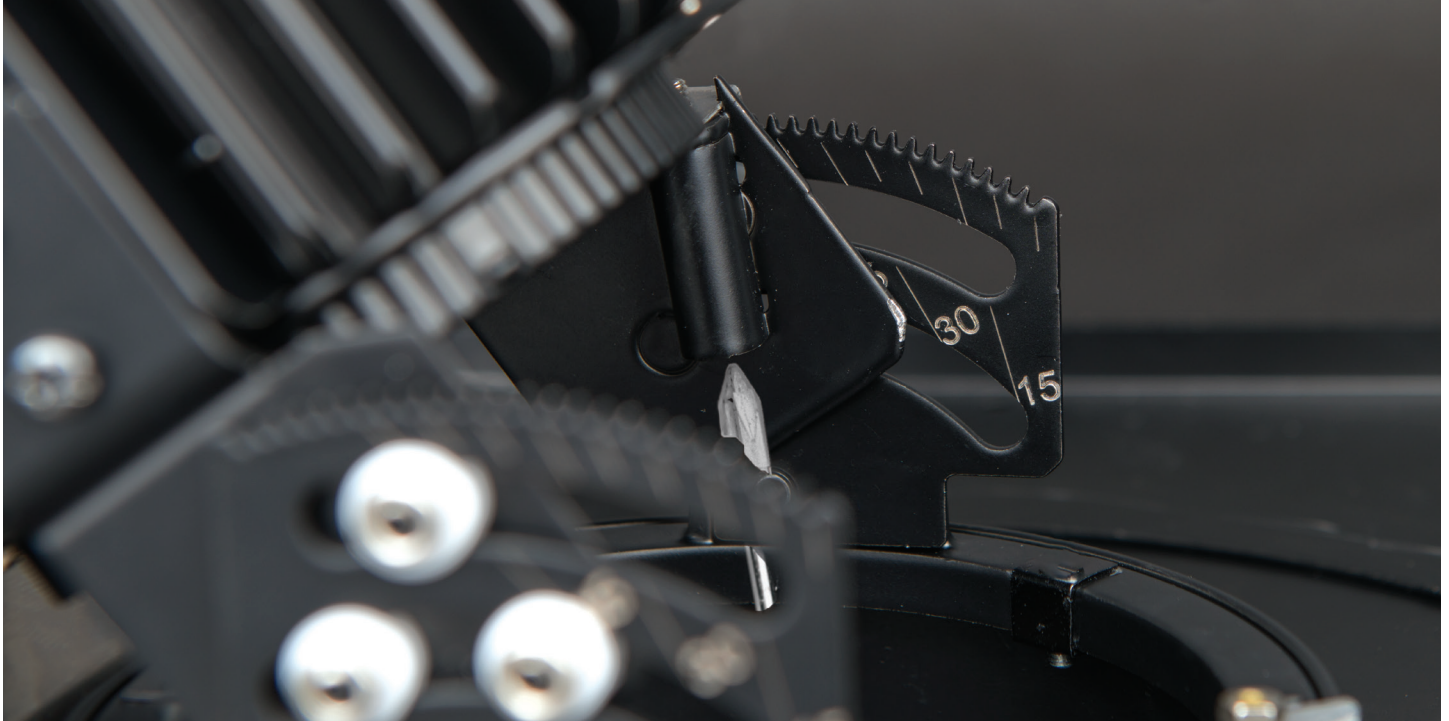
R4RAL, R4SAL

4.5" Volta - Adjustable Invisible Trim

WAC LIGHTING

Responsible Lighting®

FIELD CHANGEABLE AIMING



0 - 45° vertical lockable hot aiming



365° horizontal lockable hot aiming

wacighting.com
Phone (800) 526.2588
Fax (800) 526.2585

Headquarters/Eastern Distribution Center
44 Harbor Park Drive
Port Washington, NY 11050

Central Distribution Center
1600 Distribution Ct
Lithia Springs, GA 30122

Western Distribution Center
1750 Archibald Avenue
Ontario, CA 91760

INVISIBLE TRIM HOUSING

4.5" Volta

WAC LIGHTING

Responsible Lighting®

SPECIFICATIONS

Input:	Universal 120 - 277V AC 50/60 Hz
Standards:	ETL & cETL, Chicago Plenum, IC-rated, Airtight (see below for list)
Dimming:	Electronic Low Voltage (ELV): 100%-5% (120V only) 0-10V: 100%-0% (120 - 277V)
Emergency:	EM fixtures provided with integral Emergency battery back up with 24" lead wire remote test switch. Provides at least 90 minutes of 5W illumination during emergency operation.
Mounting:	New construction housings included with universal mounting brackets and hanger bars (Min. 14½" & Max. 24½") Ceiling cut out (Round): Ø 5 1/8" Ceiling cut out (Square): 5 1/8" x 5 1/8" See next page for ceiling thickness information
Construction:	20 Gauge cold rolled steel Diecast spackle flange included
Warranty	5 year WAC Lighting product warranty

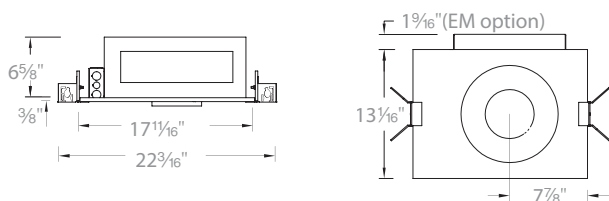
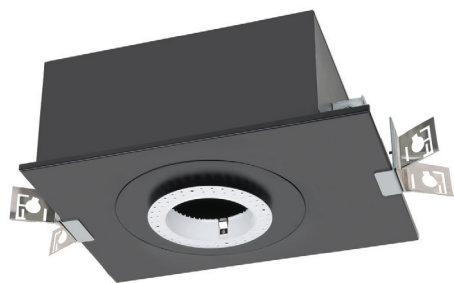
Fixture Type:

Catalog Number:

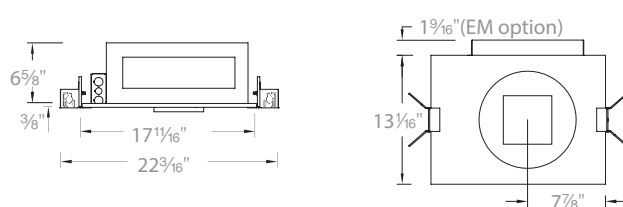
Project:

Location:

Round New Construction



Square New Construction



HOUSINGS

	Model	Power*	S	N, F, W, A	Rating	Emergency Backup	Compatible Trims
Round New Construction	R4RNL Airtight	15	10W	15W	IC rated	EM Emergency backup battery (OPTIONAL)	R4RD2L
	R4RCL Airtight, Chicago Plenum	25	15W	23W	IC rated		R4RD1L
		36	22W	34W	Non-IC		R4RAL R4RWL
Square New Construction	R4SNL Airtight	15	10W	15W	IC rated	EM Emergency backup battery (OPTIONAL)	R4SD2L
	R4SCL Airtight, Chicago Plenum	25	15W	23W	IC rated		R4SD1L
		36	22W	34W	Non-IC		R4SAL R4SWL

*Power consumption depends on beam angle of the trim.

R4

Example: **R4RNL-15** or **R4RNL-15EM** (with Emergency backup battery)

Field Replaceable Driver

D-R4N-15	Driver for 15W New Construction Hsg
D-R4N-25	Driver for 23W New Construction Hsg
D-R4N-36	Driver for 34W New Construction Hsg

waclighting.com
Phone (800) 526.2588
Fax (800) 526.2585

Headquarters/Eastern Distribution Center
44 Harbor Park Drive
Port Washington, NY 11050

Central Distribution Center
1600 Distribution Ct
Lithia Springs, GA 30122

Western Distribution Center
1750 Archibald Avenue
Ontario, CA 91760

INVISIBLE TRIM HOUSING

4.5" Volta

WAC LIGHTING

Responsible Lighting®

CEILING THICKNESS BY TRIM

Trim Model	Trim Description	Ceiling Thickness		
		1/2"	1"	1 1/2"
R4RD2L R4SD2L	<i>Downlight</i>	Yes	Yes	Yes
R4RD1L R4SD1L	<i>Shallow Regressed Downlight</i>	Yes	Yes	Yes
R4RAL R4SAL	<i>Adjustable</i>	Yes, to 45°	Yes, to 45°	Yes, to 35°
R4RWL R4SWL	<i>Wall Wash</i>	Yes	Yes	No

waclighting.com
Phone (800) 526.2588
Fax (800) 526.2585

Headquarters/Eastern Distribution Center
44 Harbor Park Drive
Port Washington, NY 11050

Central Distribution Center
1600 Distribution Ct
Lithia Springs, GA 30122

Western Distribution Center
1750 Archibald Avenue
Ontario, CA 91760