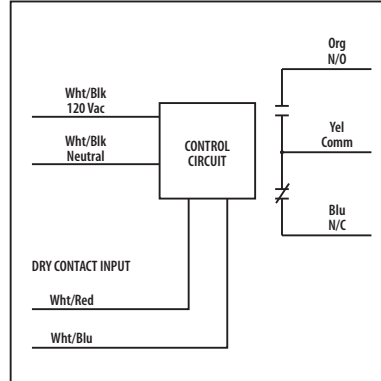


Dry Contact Time Delay Relays

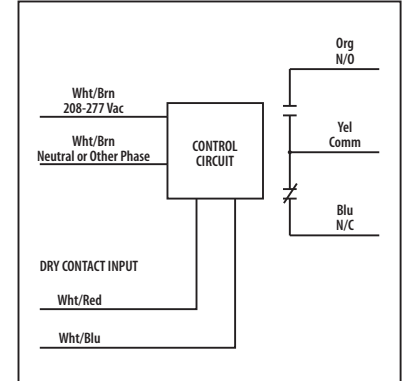
RIBD01BDC

Enclosed Time Delay Relay 20 Amp SPDT, Class 2
Dry Contact Input, **120 Vac Power Input**



RIBD02BDC

Enclosed Time Delay Relay 20 Amp SPDT, Class 2
Dry Contact Input, **208-277 Vac Power Input**



SPECIFICATIONS

Relays & Contact Type: One (1) SPDT Continuous Duty Coil
Expected Relay Life: 10 million cycles minimum mechanical

Operating Temperature: -30 to 140° F

Humidity Range: 5 to 95% (noncondensing)

Operate Time: 18mS after time delay

Relay Status: RED LED On = Activated

Time Delay Status: PINK LED FLASHING = Timing

Timing Mode: Delay On Make (N/O)

Timing Range: 6 seconds - 20 minutes

Timing Adjustment: 4 position DIP switch for range selection and single turn potentiometer for timing adjustment within range

Timing Tolerance: Switches 1 & 2 = ±10%
Switches 3 & 4 = ±5%

Timing Repeatability: ±1%

Temperature Timing Variance: ±1%

Voltage Timing Variance: ±1%

Recycle Time: 750ms Maximum

Dimensions: 4.00" x 4.00" x 1.80"
with .50" NPT nipple

Wires: 16", 600V Rated

Approvals: UL Listed, UL916, C-UL

California State Fire Marshal, CE, RoHS

Housing Rating: UL Accepted for Use in Plenum, NEMA 1

Gold Flash: No

Override Switch: No

Contact Ratings:

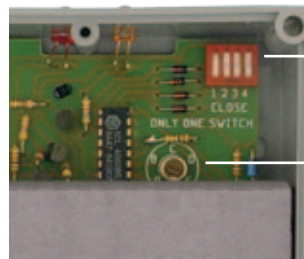
20 Amp Resistive @ 277 Vac
20 Amp Ballast N/O @ 120/277 Vac
10 Amp Ballast N/C @ 120/277 Vac
10 Amp Tungsten N/O @ 120 Vac
770 VA Pilot Duty @ 120 Vac
1,110 VA Pilot Duty @ 277 Vac
2 HP @ 277 Vac
1 HP @ 120 Vac

Power Input:

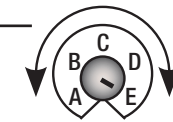
42 mA @ 120 Vac (RIBD01BDC)
62 mA @ 208-277 Vac (RIBD02BDC)

Notes:

➤ **Dry Contact Input Operation:**
Close White/Red wire to White/Blue wire to activate relay. If more than one DRY-CONTACT RIB shares a single dry-contact input, White/Blue must be common.



Timing Adjustment



Range Selection

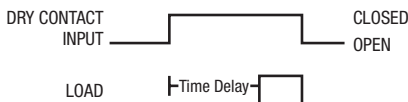


Close Only 1 Switch

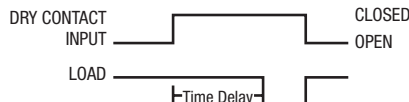
TIMING CHART

SWITCH RANGES	CLOSE DIP SWITCH	POTENTIOMETER SETTING				
		A	B	C	D	E
6s-20s	1	6s	9s	13s	16s	20s
22s-1min15s	2	22s	36s	50s	1min4s	1min15s
1min30s-5min	3	1min30s	2min10s	3min20s	4min16s	5min
6min-20min	4	6min	9min	13min20s	17min20s	20min

DELAY ON MAKE (N/O)



APPLICATION FOR DELAY ON BREAK (N/C)



-OR-

