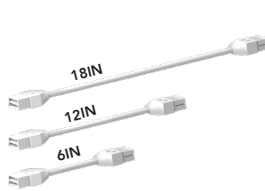
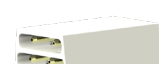


—○ LEDBarKit-Internal Driver (LBI)

PARTS & ACCESSORIES

	LINKING CABLES	RP-LBI-LC-6IN-DIM-10P	(10 PACK ONLY)
		RP-LBI-LC-6IN-NODIM-10P	
		RP-LBI-LC-12IN-DIM-10P	
		RP-LBI-LC-12IN-NODIM-10P	
		RP-LBI-LC-18IN-DIM-10P	
		RP-LBI-LC-18IN-NODIM-10P	
	SEAMLESS CONNECTOR	RP-LBI-SSC-DIM-10P	
		RP-LBI-SSC-NODIM-10P	

LINKING CABLES & SEAMLESS CONNECTORS

Use Linking Cables and Seamless Connectors to easily connect the power and control wires from one light bar to another. The ...-DIM version of the linking cables and seamless connector link all connections (AC power; 12V Aux power; 0-10V DIM signal) from light bar to light bar. Use these items to control all light bars from one sensor or incoming cable connection. The ...-NODIM version of these items only links the AC power. Use these items to AC power all light bars with a single power feed; but separate control signals into individual groups.



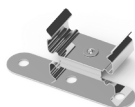
4.7IN SPACER CONNECTOR | RP-LBI-SRC-4.7IN (SINGLE PACK)

Use the 4.7in Spacer Connector to bring the length of the bar system to a standard dimension (24in, 36in, 48in). This is useful when retrofitting linear fixtures of a standard length. It allows for the bar to be centered on each standard-length fixture. Each 4.7in spacer connector comes with (2) Seamless Connector-DIM.



OC2 SENSOR KIT | RP-LBI-OC2 (SINGLE PACK)

Sensor OC2 is a Tri-Level, remote controllable high frequency sensor designed to easily integrate with the light bars. It is totally plug&play! It can dim the light bars down to conserve more energy from both motion and daylight. The OC2 sensor controls the 0-10V DIM signal in both directions from the Sensor unit. Each sensor kit comes with (1) OC2 sensor; (1) surface mount magnetic clip; (2) Seamless Connector-DIM; (1) 12" Linking Cable-DIM. See RP-LBI-OC2 data sheet for more details.



SURFACE MOUNT MAGNETIC CLIP | RP-LBI-SMM-10P (10 PACK ONLY)

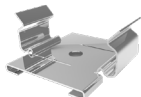
The Surface Mount Magnetic Clip provides the most universal method for attaching the light bar to a wall, ceiling, or fixture to be retrofitted. The mounting tabs that extend perpendicularly from the light bar can be easily removed by bending and breaking on the pre-scored line. The strong rare-earth magnets are intended to hold light bars in place while installing mechanical fasteners. Not intended for permanent installation with magnets only.

Two of these clips are included in each light bar kit.



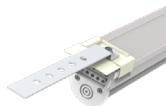
SUSPENDED IN-LINE BRACKET | RP-LBI-SIL-10P (10 PACK ONLY)

The Suspended In-Line Bracket is a wide clip that fastens over the junction of 2 light bars to keep them straight in-line and provides mounting points for common suspension methods (air craft cable, drop chain, etc.)



T-BAR CLIP | RP-LBI-T1516-10P (10 PACK ONLY)

The T-Bar Clip is the fastest way to mount a light bar to a T-Bar grid ceiling. Works with standard 15/16" grid only.



BLADE CLIP | RP-LBI-BLC-10P (10 PACK ONLY)

The Blade Clip is designed to provide a retrofit solution for fixtures that have thin sheet metal or plastic film reflectors commonly found on high bay fixtures. The rotating mounting blade provides a degree of freedom to align the mounting holes on the blade with fastening locations that may not be in-line with the light bar or where the distance between available mounting points is greater than the length of the light bar. It is common to attach the blade to the same point holding the thin reflector to the fixture frame.

RemPhos by **Light Efficient Design**
lighting on target

FOR PRODUCT INFO ("LED" MODEL #) CONTACT.....Light Efficient Design • 188 S. Northwest Highway • Cary, IL 60013 • 847.380.3540 • led-llc.com
FOR PRODUCT INFO ("RP" MODEL #) CONTACT.....RemPhos by Light Efficient Design • 30 Log Bridge Road, Building 200 • Middleton, MA 01949 • 877.997.3674 • remphos.com