

PROJECT

TYPE

CATALOG NUMBER (FOR CUSTOM LENGTHS, PLEASE SEE ORDERING EXAMPLE BELOW)

PRODUCT OVERVIEW

Now available with adjustable kelvin temperature (2700K, 3000K, 4000K), the RSD is an easy to install recessed mount luminaire with an integral junction box that is connected via a modular jack. These 4", 6" and 8" shallow mount, regressed downlights features superior optics along with Energy Star rating in a streamlined, shallow mount design.

KEY FEATURES

- 120V
- Tunable white (2700K, 3000K, 4000K)
- Wet location
- IC rating for insulated ceilings
- Edge-Lit technology for diode free illumination
- Dimmable (Triac)
- Shallow mount

ELECTRICAL

- 120V (remote power supply not required)

OPTICS

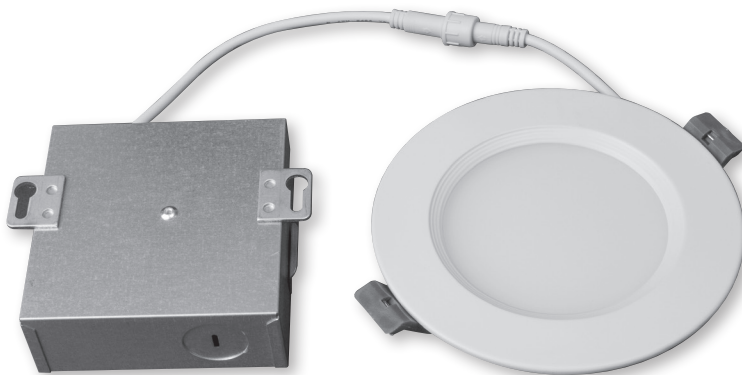
- 90+ CRI
- 120° beam angle

CERTIFICATION

- ETL
- Title 24 - JA8
- Energy Star

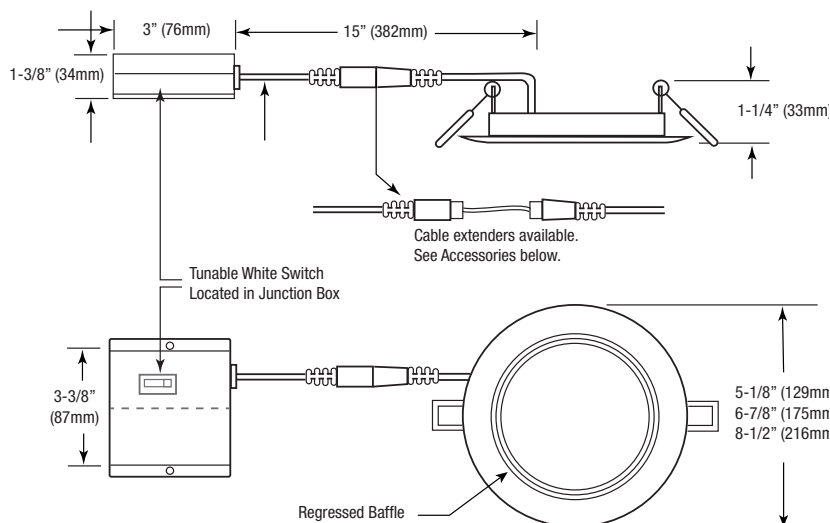
WARRANTY

- 5 year warranty



PRODUCT ORDERING

Catalog Number	Trim Dimensions	Wattage	Lumens	CRI	Finish
RSD-4-TUN	5-1/8" Dia.	9W	500, 525, 550	90+	White
RSD-6-TUN	6-7/8" Dia.	12W	700, 725, 750	90+	White
RSD-8-TUN	8-1/2" Dia.	15W	900, 925, 950	90+	White
ACCESSORIES					
Catalog Number	Description				
RSD-TUN-5FT-EXT	5' extension cord for RSD Series Downlights				
RSD-TUN-10FT-EXT	10' extension cord for RSD Series Downlights				
RSD-TUN-20FT-EXT	20' extension cord for RSD Series Downlights				
RSD-NCP	New construction plate for all RSD Series Downlights				



CUT-OUT DIMENSIONS

RSD-4-TUN: 4-1/4" DIA.
RSD-6-TUN: 6-1/8" DIA.
RSD-8-TUN: 7-3/4" DIA.