



# VERSABAR CORPORATION

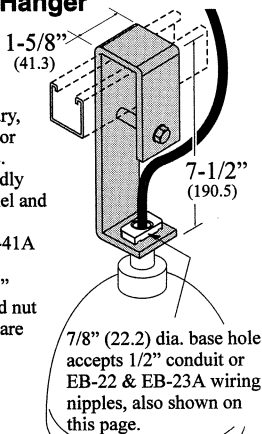
## ILLUMINATION SYSTEMS SUPPORTS

### VF-7105-A

Wt. "C" 197 Lbs.  
(89.4 kg.)

#### Clevis Fixture Hanger

Clevis hanger for suspension of mercury, metal halide, H.P.S. or heavy incandescents. Supports fixture rigidly from raceway channel and allows for plug-in connection with LL-41A or B. For use with channels up to 2-1/2" (63.5) deep. Bolt and nut for clamping action are included.

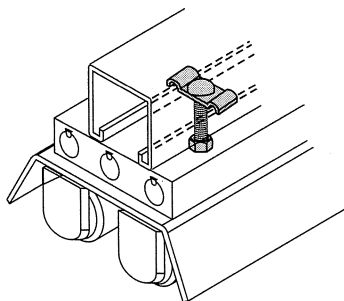


7/8" (22.2) dia. base hole accepts 1/2" conduit or EB-22 & EB-23A wiring nipples, also shown on this page.

### FF-100

Wt. "C" 6 Lbs.  
(2.7 kg.)

#### Fixture Stud Nut Assembly

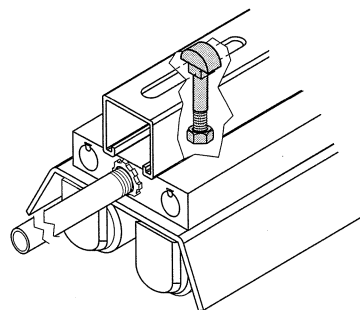


1/4"-20 x 1-1/4" stud nut for fixture attachment. Stud extends 1" (25.4) below channel slot. Hex nut included.

### FF-200

Wt. "C" 10 Lbs.  
(4.5 kg.)

#### Fixture Shoulder Bolt

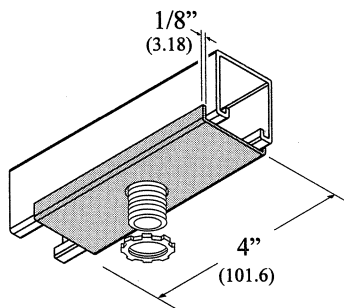


3/8"-16 X 2-1/4" shoulder bolt with special head to fit through P3S channel slots. Bolt extends 3/4" (19.1) below 1-5/8" (41.3) square channels. Hex nut included.

### LL-60

Wt. "C" 25 Lbs.  
(11.3 kg.)

#### Fixture Spacer

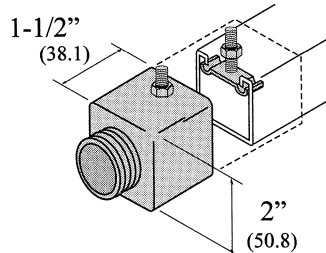


Spacer fits between channel and electric discharge lighting fixtures where 1/8" (3.2) clearance is required. Clearance hole for EB-22 wiring nipple nut also shown on this page. (Nipple and locknut not included.)

### LL-21A

Wt. "C" 32 Lbs.  
(14.5 kg.)

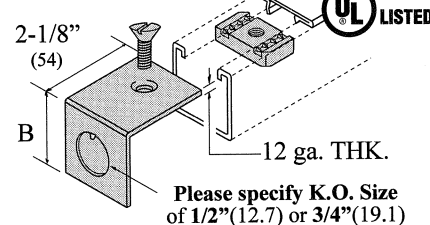
#### 1" Nipple End Cap



Conduit entry fitting with 1" NPT male thread on 9/16" long nipple. Fits 1-5/8" (41.3) square channel only. Comes complete with FF-100 stud nut assembly.

### VF-1003A Series

#### Knock-Out End Cap



Please specify K.O. Size of 1/2" (12.7) or 3/4" (19.1)

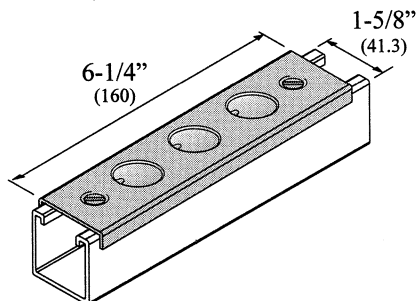
Conduit entry end cap with 1/2" (12.7) or 3/4" (19.1) opening. End cap is available to fit channel sizes of 1-3/8" (34.9) and deeper. 1/4" x 5/8" FHMS & VN-1025 included.

Part #	Fits Channel	Dim "B"	Wgt. per "C"
VF-1003A-6	VA-6 & 7	1-3/8" (34.9)	14# (6.4)
VF-1003A-1	VA-1 & 2	1-5/8" (41.3)	16# (7.3)
VF-1003A-3	VA-3	2-1/2" (63.5)	20# (9.1)
VF-1003A-11	VA-11	3-1/4" (82.5)	24# (11)

### LL-50A

Wt. "C" 36 Lbs.  
(16.3 kg.)

#### Outlet Plate

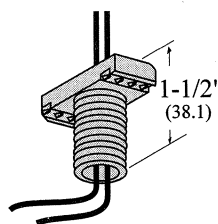


Outlet plate fitting. Three 7/8" (22.2) dia. K.O.'s on 1-3/16" (30.2) centers. Supplied ready to install with VN-1025 channel nuts and 1/4" x 5/8" flat head machine screws.

### EB-22

Wt. "C" 21 Lbs.  
(9.5 kg.)

#### Aluminum 1/2" Nipple Nut



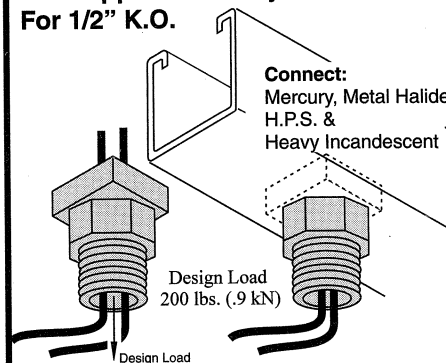
Universal design works with channel slot or K.O. Also works with fittings, hangers, and all other devices which have a 1/2" pipe thread K.O.

1/2" threaded nipple nut for connecting fluorescent fixtures directly to raceway or H.I.D. fixtures to VF-7105A. EB-22 provides 1" (25.4) clearance when used through channel K.O. or 3/4" (19.1) when supported by channel from slot.

### EB-23A

Wt. "C" 38 Lbs.  
(17 kg.)

#### 3/4" Nipple Assembly For 1/2" K.O.



Connect: Mercury, Metal Halide H.P.S. & Heavy Incandescent

Design Load 200 lbs. (.9 kN)

This adaptor works with manufacturers standard 1/2" K.O. raceway channel or VF-7105-A fixture hanger. 3/4" male pipe thread nipple can be removed if 3/4" female thread is required.