

SPECIFICATION SHEET

W300 SERIES DIFFERENT SCHEDULES EACH DAY 7 DAY TIME SWITCH

APPLICATIONS

- Heating, air conditioning.
- Display lighting, ventilating systems.
- Lighted signage.
- Storefront lighting.

FEATURES SCHEDULING:

Minimum ON setting is 1 hour with a minimum OFF setting of 2 hours. Minimum 8 hours between 2 OFF settings. Models W400A and W402A offer minimum ON/OFF settings of 3 1/2 hours. 7 day calendar dial accommodates up to 2 pairs of ON/OFF trippers per day – 7 pairs are supplied.

SKIP-A-DAY:

Omit operations on any day.

MANUAL OVERRIDE:

Until the next regularly scheduled ON or OFF automatic operation then resumes.

OPTIONAL RESERVE POWER:

"L" models keep dial on time up to 24 hours during power outage.

SPECIFICATIONS

INPUT VOLTAGE:

120 or 208-277VAC, 60Hz, varies by model.

TIMING ACCURACY:

Line frequency.

TERMINAL RANGE:

#8 - #14AWG.

OPERATING TEMPERATURE:

-40 °F to 165 °F (-40 °C to 74 °C).

POWER CONSUMPTION:

3 watts, 5 watts for "L" models maximum.

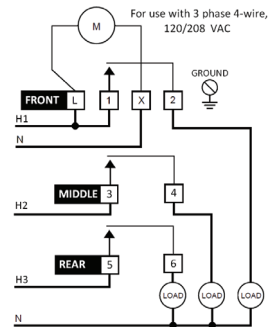
ENCLOSURE:

Indoor NEMA 1 Metal with lockable hasp. Other enclosures include metal Indoor/Outdoor NEMA 3 with suffix "O" (see page 557 for enclosure dimensions).

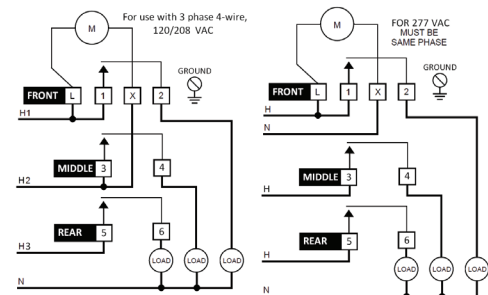


WIRE DIAGRAM

W300



W302



ORDERING INFO

CAT. NO.	UPC CODE	INPUT SUPPLY (VAC) 60Hz	OUTPUT CONTACTS	ENCLOSURE TYPE
W300	32001	120	3PST	Metal Indoor NEMA 1
W300-O	32003	120	3PST	Metal Indoor/Outdoor NEMA 3
W302	32002	208-277	3PST	Metal Indoor NEMA 1
WITH RESERVE POWER				
W300L	39005	120	3PST	Metal Indoor NEMA 1
W302L	39006	208-277	3PST	

Replacement
Trippers

Order #P69 for 7 pairs of ON/OFF trippers

Replacement
Motor

#101 (120V) & #201 (208-277V). For "L" models order #36 (120V) and #46 (208-277V).

CONTACT RATINGS

TYPE	VOLTAGE (VAC)	CONTACT RATING
General Purpose	120 -277	40A
Resistive	120 -277	40A
Tungsten	120	40A
Ballast	120-277	20A
Pilot Duty	120 -277	1000VA
Motor	120	2HP
	240	5HP

277VAC Single Phase